

# Top Execs Review '55; Preview '56

# LIBRAZETTE

AN EXCHANGE OF NEWS AND KNOWLEDGE

Volume 4, No. 1

Published By  
LIBRASCOPE EMPLOYEES  
GLENDALE, CALIFORNIA

February 1956

## Diversity Key to Future Imm Tells Supervisors

By JOE MESCH

Librazette News Editor

Company net profits dipped sharply last year, but important steps made in product diversification are expected to reverse the 1955 downward trend both in 1956 and succeeding years.

The forecast was made at a management dinner, Feb. 17. Librascope supervisors—130 strong—gained valuable new

conditions in general and with the efficacy of graphical analysis when applied to those conditions.

He then showed his audience a graph depicting total billings against military and commercial sales in the past five years. These showed all too clearly how dependent on military business, and especially Mk 42 and Mk 5 business, Librascope was prior to 1955.

Last year, for the first time in the Company's history, commercial sales were a recognizable increment of the total billings. Commercial products are expected to furnish an even more significant percentage of total sales in 1956, Bratton said.

### Looking Into Future

Looking ahead in 1956, Bratton foresaw a further increase in Cost Plus Fixed Fee billings along with the rise in commercial sales.

Extending his forecast into 1957, the operational vice-president indicated the Company anticipated an increase in all categories of operation, especially in the area of commercial billings.

This activity should show a further extension in 1958 as Company developments reach either the pilot production or full production stage. These developments, all currently underway in the Company, include new concepts in fire control and navigation systems, advanced airborne optical equipment designs, digital computer work, and a number of developments in the general commercial field.

Bratton emphasized that his forecasts, particularly for 1957 and 1958, were of necessity based on assumptions that certain development programs would come to early and successful fruition. He explained that successful diversification is essential, because it makes the Company less and less susceptible to the success or failure of any single program.

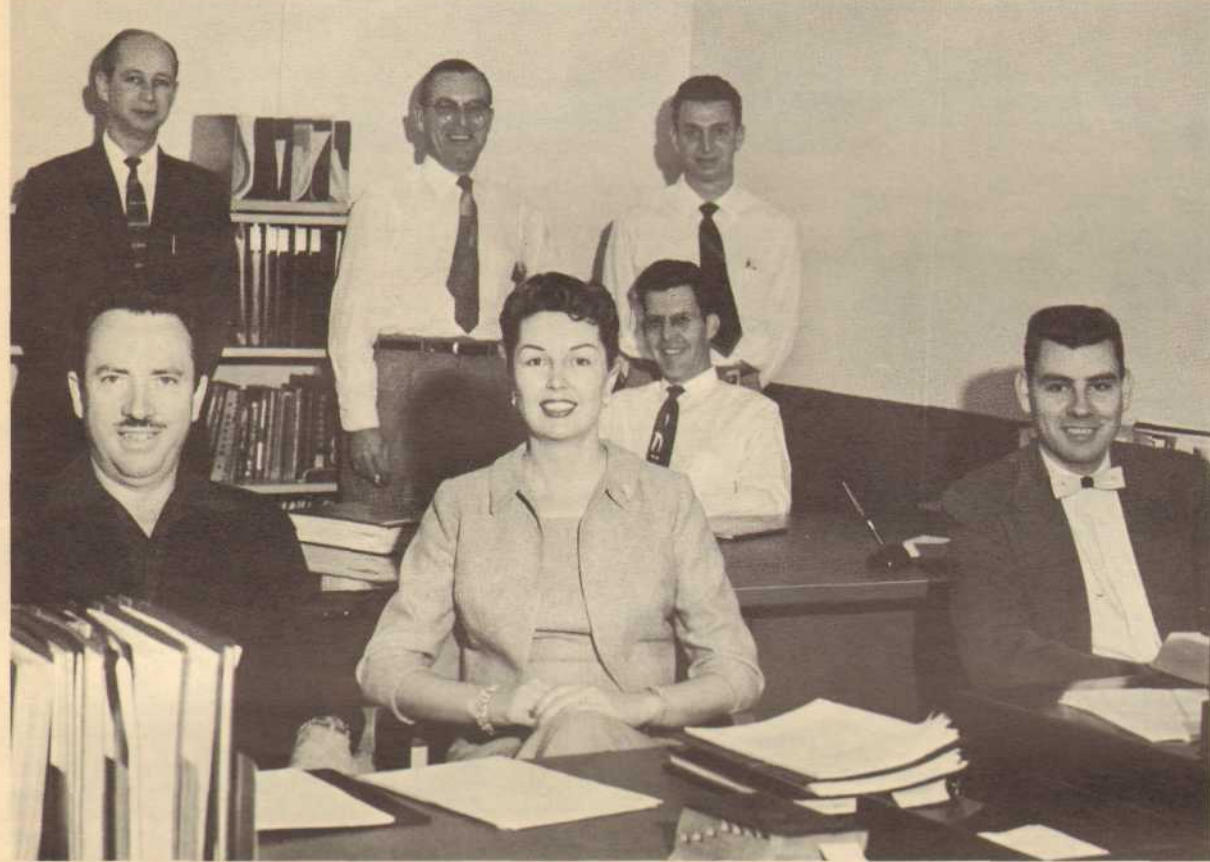
The implications of diversification were even more graphically pointed out by Mr. Imm in his talk.

### What of the Past

One of the important concepts associated with planning involves a consideration of where we are going and how we plan to arrive at our goal, Imm said in opening his talk.

A determination of where we are going of necessity requires a review of where we have been, Imm went on to say.

(Continued on page 2)



**IMPROVED PERFORMANCE** among all Librascope departments is the goal of the recently organized Operations Analysis group whose members are shown here. The new department expects to study all phases of Company activity and to recommend ways for streamlining certain functions. Seated, l. to r., Ed Sullivan, Marge Anton, Ivan Franklin and Keith Martin. Standing, l. to r., Bob Gorman, Earle Runion and Dave Harrison.

## PROJECT STREAMLINE

# Analysis of All Company Operations Will Be Made by New Department

Operation Streamline—a project dedicated to the proposition that Librascope shall be a bigger and better place at which to work—went into effect the last week of January with the organization of the Operations Analysis department.

W. E. Bratton, vice-president, Operations, announced that the new department will be headed by Earle Runion and said it was formed to "analyze costs, survey operations, recommend action to help supervisors improve the effectiveness of their operations." The need for such a step should be fairly obvious.

Increased competitive activity in the field of instrumentation makes it mandatory that Librascope meet its competitors on equal footing. How best to achieve that footing will be a major goal of the department.

### Cooperative Venture

"Operation Analysis is a program for all Librascope," Bratton went on to say, "for only through the cooperative efforts of everyone may we increase operating efficiency. With your assistance we hope Operations Analysis can determine how we can most effectively attain our goals."

Runion was quick to point out when interviewed that his department is not out to conduct a "speed-up" operation. Neither is it conducting a straight cost-reduction campaign. Rather the department function is to make recommendations for improving operating performance throughout Librascope.

Recommendations of the Operations Analysis department will be divided into two major categories: the first will cover areas

where immediate action is possible; the second will cover areas where long-term action can be taken.

### Recommendations Only

Runion further emphasized that his department will merely recommend courses of action to management. The department will not institute remedial actions on its own.

The first step was taken with the selection of the men who will analyze all phases of Librascope activity. Joining Runion in the new department are Ivan Franklin, Bob Gorman, Dave Harrison, Keith Martin, and Ed Sullivan. Marge Anton will serve as department secretary.

Collectively these men possess knowledge of and experience in almost every area of Company operation. Consequently, they are well qualified to observe and to analyze existing operations and to make recommendations for improvements therein.

They cannot, however, carry the whole load by themselves. Thus, in the course of their work they will call on qualified employees to assist them in obtaining the facts necessary to the success of the operation.

### How It Works

Current plans call for the Operations Analysis group to conduct its studies on a departmental basis. (Continued on page 4)

*Help! Help! Help!  
Send Us a Tale  
... for Librazette*

As practically everyone knows, most people like to read tales about other people more than they like to read about anything else anyone ever dreamed up to write about. That's why the Librazette editors try to run stories about Librascope people in the Company paper.

Most news about Company employees comes from the Librazette correspondents. There's only one trouble: Since Librascope is no longer a little company, our correspondents find it increasingly difficult to maintain that close personal contact so necessary for complete news coverage.

How about every member of the already - big - and - getting - bigger Librascope family giving the Librazette correspondents and staff a helping hand? Tell a staff member or correspondent what you know about any Librascope employee whose hobbies, skills, background and/or outside activities might make interesting reading. Names of editorial personnel appear in the staff box, page 4.

Don't miss Librascope's "You and Your Future," broadcast Monday through Friday at 6:55 a.m., over radio station KABC.

### Costs Rise

Turning next to job costs, Lindahl used graphs to show how certain elements entering into those costs, especially indirect labor costs and other overhead, have risen in recent years while only one element, material, has declined.

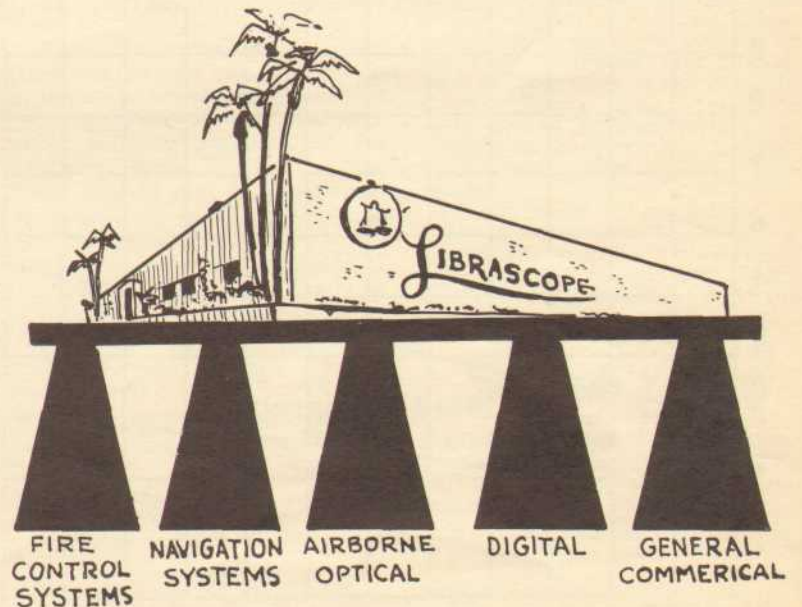
As might be expected, the rising costs have been echoed by a drop in net profits. In 1955, for example, the net profit based on straight time hours of labor averaged out at only 8 cents an hour.

Profit improvement in 1956 is anticipated but only if increased efficiencies and cost reductions reflected in the budget forecast are realized.

Nor was net profit the only thing to drop in 1955. The backlog of company business declined from two years at the end of 1954 to less than a year in 1956.

### Bratton Speaks

Bill Bratton, Vice-President, Operations, spoke next. His opening remarks dealt with business



**NEW DEVELOPMENTS** at Librascope, as shown in the above chart, are what President Imm termed "an ever growing number of pillars being readied for the Company."

## Clark Audience Growing

"You and Your Future," Librascope's five-minute radio program, heard regularly over KABC at 6:55 a.m. Monday through Friday, boasts listeners from all over Southern California, it was learned recently.

During the 1955 Holiday Season, Gene Emmet Clark, who conducts the program, received Christmas greetings from more than 1000 listeners in 125 Southland communities, a 15 per cent increase over 1954.

Mr. Clark's friendly reply contained these "Ten Ideas for Successful Living in 1956," arranged in an acrostic, which readers may find thought provoking:

- L ove one another — nothing else is half so important.
- I magine yourself as you want to be — then act the part!
- B e interested in others and you will be interesting.
- R emember there is a right answer to every seeming problem.
- A lways put what is right before what is expedient.
- S omething within you is superior to every circumstance.
- C ontrol your thoughts, for they control your life.
- O nly the self-centered are lonely or unhappy.
- P rejudice is being down on something you're not up on.
- E xpect the best, give thanks for it, and watch what happens!

## Management

(Continued from page 1)

Prior to 1954, Company production and outlook was completely military, he pointed out. Since that date, however, Librascope has exerted strong effort to develop commercial products and has invested large sums in a variety of commercial developments.

In the course of this branching out into other sales fields, the area of development shifted from one involving primarily mechanical systems to electronic systems development.

Imm then presented a series of charts that gave visual evidence of how the development programs which support the Company have increased both in number and kind over the years.

Up to 1946, all Company activity was dependent on the balance computer. From 1946 to 1950, the Mk 42 program formed a somewhat stronger pillar to support the structure. In the period 1950-52, the Mk 5 program joined with the Mk 42 program to provide an even greater measure of stability.

### Growing Diversification

Even two pillars, Imm pointed out, were no real assurance of support since either, or both, might be resting on sand.

Today, an ever growing number of pillars in the form of new developments are being readied

for the Company. Some of these, the president stated, were as yet but forms. They could scarcely serve as supports for an expanding firm until they were filled with the concrete of production orders.

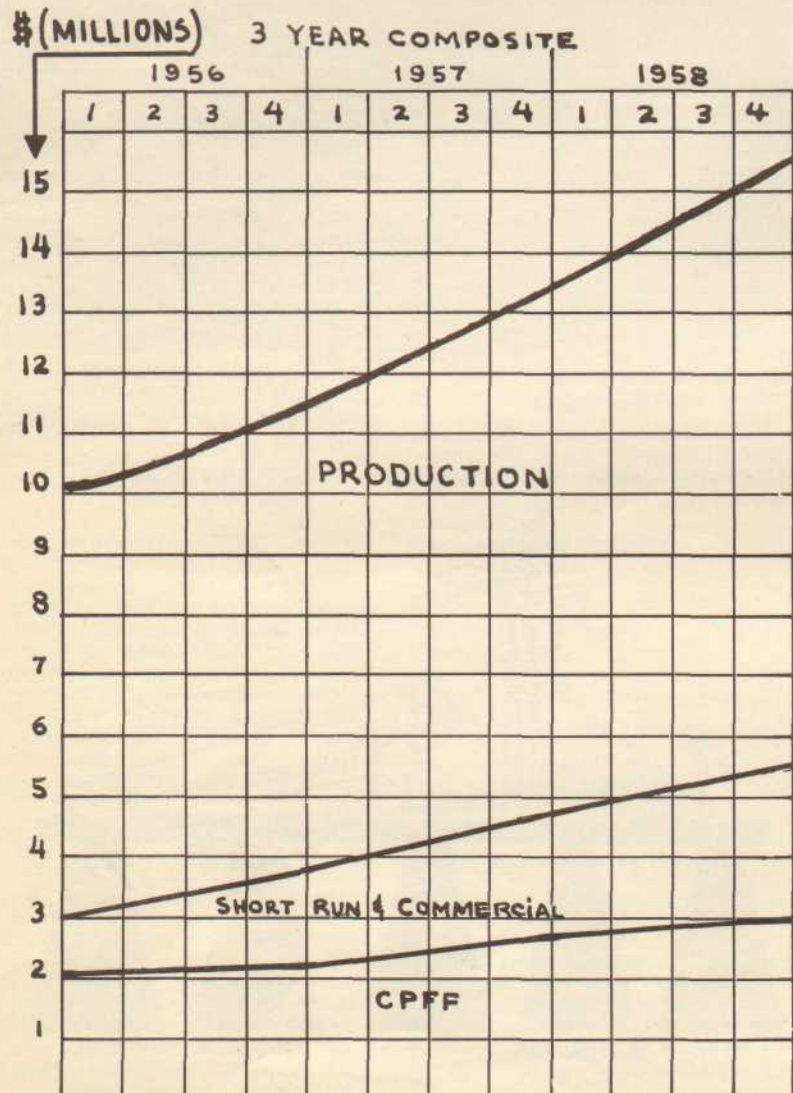
In a sense, the problems facing Librascope are but reduced reflections of problems facing the nation, Mr. Imm said. For example, the announced goal of Russia's sixth and most ambitious five-year plan is to outstrip the United States both in technical excellence and in production.

"Individually, and collectively, we must meet the challenge of the enemy abroad and the competition at home by bringing out new and improved products faster, and at lower cost.

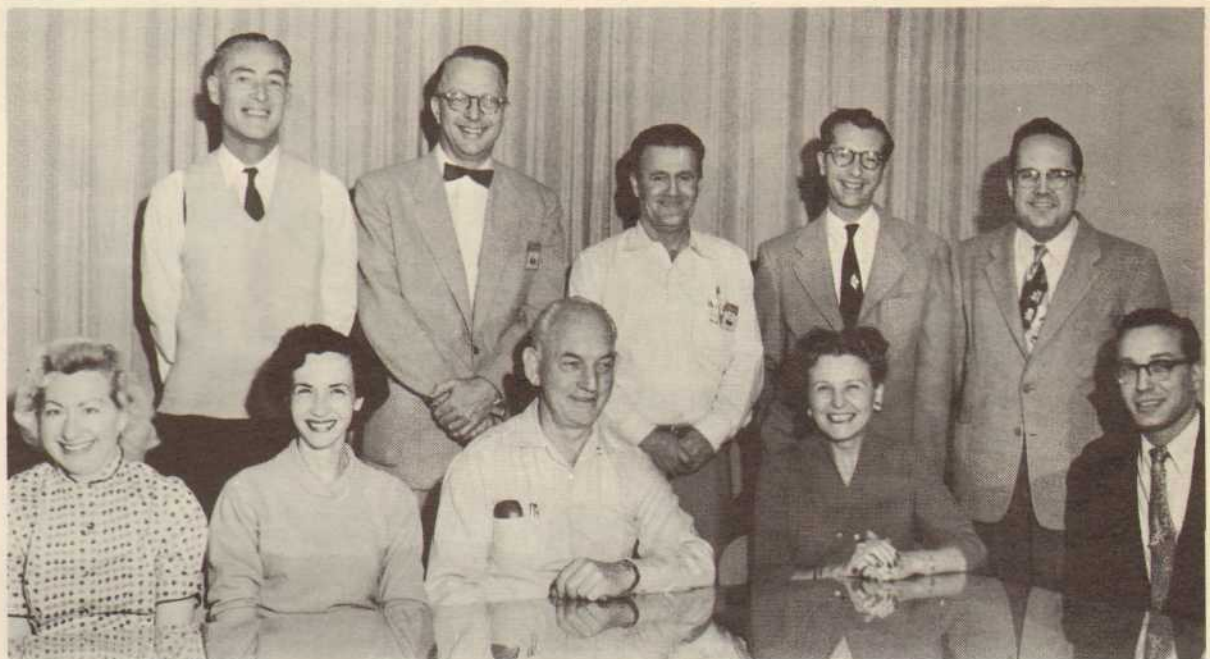
"We at Librascope have been handicapped in the past in that limited production of large and complex instruments has made for difficulties in planning, production and test.

"One method of attacking this problem is to introduce an increasing measure of standardization," Imm said.

"If we can come up with a series of standard components and subassemblies, building blocks so to speak, which can be utilized in many different types of developments, we will then be in a position to reduce significantly the time lag between contract issuance and delivery of finished units."



FUTURE FORECAST is graphically portrayed in above chart used by Vice-President Bratton to illustrate his remarks at recent management dinner.



MONEY MATTERS of the Librascope Credit Union are the responsibility of these ten Company employees who serve on the board of directors, credit committee and supervisory committee. Back row, l. to r., Herb Darby, Phelix Ellingson, Glen Harrison, Al Sharp and Don Barnes. Front row, l. to r., Dorris Eberle, Nettie Stone, Eugene Strong, Mildred Huggins and Harold Luth.

## Credit Union Votes 4% Dividend Hal Luth Chosen New President

### LIBRASCOPE EMPLOYEES CREDIT UNION ANNUAL REPORT

Year Ended December 31, 1955  
(with comparative figures for 1954)

#### INCOME STATEMENT

	1955	1954	Increase (Decrease)
Income:			
Interest on Loans .....	\$ 17,672.04	\$ 6,346.10	\$ 11,325.94
Income from Investments .....	889.10	16.67	872.43
Other Income .....	350.00	.....	350.00
Total Income .....	18,911.14	6,362.77	12,548.37
Expenses .....	9,257.59	3,699.58	5,558.01
Net Income for year .....	9,653.55	2,663.19	6,990.36
Add: Undivided Earnings Beginning of Year .....	180.02	551.38	(371.36)
	9,833.57	3,214.57	6,619.00
Deduct: Dividends Paid for Year .....	7,604.77	2,501.91	5,102.86
	2,228.80	1,712.66	1,516.14
Transfer to Reserve Fund .....	1,930.71	532.64	1,398.07
Undivided Earnings at End of Year .....	\$ 298.09	\$ 180.02	\$ 118.07

#### BALANCE SHEET

Assets:			
Cash in Bank/On Hand .....	\$ 39,804.55	\$ 12,152.64	\$ 27,651.91
Outstanding Loans .....	220,565.28	133,785.07	86,780.21
Furniture and Fixtures (Less Depreciation) .....	5,000.13	5,416.25	(416.12)
Federal Savings and Loan .....	16,000.00	16,000.00	.....
Real Estate .....	29,204.53	.....	29,204.53
Loans to Other Credit Unions .....	.....	19,516.67	(19,516.67)
Total Assets .....	310,574.49	186,870.63	123,703.86
Liabilities:			
Accounts Payable .....	6.00	.....	6.00
Shareholders Deposits .....	307,211.24	185,136.41	122,074.83
Reserve Funds .....	3,059.16	1,554.20	1,504.96
Undivided Profits .....	298.09	180.02	118.07
Total Liabilities .....	\$310,574.49	\$186,870.63	\$123,703.86

## Stupar, Hilberg Exchange Vows

Two of Librascope's most charming young people were married in an impressive afternoon wedding, Feb. 5, at Saint Finbar's Church in Burbank. Margaret Hilberg and Wesley Stupar, both of engineering (Margaret recently transferred to the Company's Burbank division), exchanged vows during a double-ring ceremony which was followed by a reception at the Rosewood Wedding Chapel, on Buena Vista Street, Burbank.

The bride wore a white, embroidered organdy, floor-length gown and fingertip veil. She carried a bouquet of white orchid encircled by carnations. Her attendants included: Clorice de

Brauere, maid of honor; Nancy Davidson and Jacqueline Hatch, bridesmaids.

The bridegroom's brother, Tim, was best man. Otto Gelormini and Bob Binz, both of engineering, were ushers.

After a honeymoon at the Dodge Ridge Lodge near Yosemite National Park, the Stupars are now residing in Glendale.

On Feb. 1 a lingerie shower was given for Margaret by Betty Robbie and Ruby Jack of engineering at Betty's home. Librascope friends attending were Shirley Ryan, Charlotte Hoskinson, Marilyn Marson, Ellen Bunting, Phyllis Rudin, Dona Rokahr, Marge Anton and June Zemblidge.

By DONNA SNYDER  
Librazette Staff Writer

At the organization's annual general meeting, Jan. 25, the Librascope Credit Union launched its 1956 business year by issuing a 1955 financial statement and by declaring a 4 per cent dividend on shares held by members. Underscoring the success attained by the CU last year, the dividend totalled \$7,604.77. The complete financial statement appears on this page.

Elections were also on the docket at the recent meeting. Two new members were elected to the board of directors, one new member to the supervisory committee, and one new member to the credit committee.

### Directors Named

Each member of the seven-man board of directors serves for three years. Two new members are chosen each year. Harold Luth, accounting, and Glen Harrison, model shop, were elected Jan. 25 to succeed Lloyd Somerfield, manufacturing and Cesar Goldstein, tool shop. Luth and Harrison join Mildred Huggins, accounting; Herbert Darby, assembly; Eugene Strong, assembly; Phelix Ellingson, office services; and Dorris Eberle.

Credit Union officers, elected by (and from among) the board of director's members, are now: Harold Luth, president; Mildred Huggins, vice-president; Eugene Strong, secretary.

A full-time Credit Union Association employee, Dorris Eberle, treasurer, is the only CU officer who draws a salary. All other officers and committee members serve sans pay.

Duties of the board of directors are as follows:

1. Act on all membership applications.
2. Obtain surety bond coverage for treasurer or any employee or officer having access to Credit Union funds or securities.

(Continued on page 3)

## Bargain 'Daze'

The Precisioners store offers 1847 Rogers Bros. silverware in a 55-piece service for eight, with storage chest, attractively priced at \$39.97. Regular retail price was \$100. Two pattern choices: First Love or Eternally Yours.

About to spring house clean? Eileen Brown, store manager, has Eureka, General Electric, Lewyt, and Apex vacuum cleaners.

Bargain-wise employees will want to pick up one of the eight-cup automatic Universal coffee makers now on hand at the store in a limited quantity, specially priced.

Building or buying a home? The Precisioners store now handles a complete line of Tappan gas ranges, including the new built-in models.

# Royal McBee Executives View Plant Facilities

Eager to begin playing their important roles in the newly formed Royal Precision Corporation (**Librazette**, January 1956), Librascope and Royal McBee personnel have already taken steps to get the new enterprise underway.

## Opinion Study Planned Soon

Company employees will soon have opportunity to express innermost thoughts on a subject close to their hearts: what it's like working at Librascope.

California Institute of Technology has been asked to prepare a questionnaire designed to gather employee opinions. Cal Tech representatives will administer the questionnaire to Company personnel by groups.

No employee will be required to sign his questionnaire. Anonymity is assured to encourage everyone to answer frankly and truthfully. Cal Tech will tabulate the results and report their findings to Librascope management and to all Librascope employees.

More complete details will be made known soon by letter from President Lewis Imm's office.

## Credit Union

(Continued from page 2)

3. Determine interest rates on loans.
4. Fix maximum number of shares which may be held by, and maximum amount which may be lent to any one member.
5. Declare dividends.
6. Recommend amendments to by-laws.

7. Direct deposit or investment funds.

The three-man supervisory committee is elected by Credit Union members for three-year terms. Don Barnes, the newly elected member, succeeds Dana Nixon, and joins office-holders Al Sharp and Nettie Stone, all of accounting.

The supervisory committee has authority to:

1. Suspend any member of the credit committee or board of directors.
2. Call meetings of shareholders to review Credit Union practices.
3. Audit books and records and examine business affairs of Credit Union at least once a year.

The credit committee is made up of three members who are elected for three-year terms by Credit Union shareholders. Those elected to this committee may also serve on the board of directors but not on the supervisory committee. Phelix Ellingson replaces outgoing Lloyd Somerfield and joins incumbents Mildred Huggins and Herbert Darby on this important committee.

### Credit Committee Duties

The credit committee functions mainly to approve any loan or extension of credit made by the Credit Union. This committee meets every Thursday to review requests for loans. Any applicant for a loan or extension of credit may appeal the decision of the credit committee before the board of directors.

The Credit Union functions under the California Credit Union Law which provides for its incorporation, powers, management, and supervision. The Commissioner of Corporations of the State of California examines the books, property, transactions and affairs of the Librascope Credit Union at least once a year, and ascertains its financial condition and solvency.

Librascope employees who want to join the Credit Union are invited to obtain membership applications from any board of director's member or from the CU office, located in the personnel department, Building 2. Credit Union hours are 11:45 a.m. to 12:30 p.m., and 4:00 p.m. to 4:30 p.m., Monday through Friday.

To learn about Librascope production facilities and background, three top executives from Royal McBee's headquarters in Hartford, Connecticut, visited here January 30 through February 1. Their names: E. H. Dreher, research and development director; Carl S. Young, engineering planning manager; I. S. Lerner, project manager.

Royal Precision Corporation, owned jointly by General Precision Equipment and Royal McBee, is expected to market electronic data processing equipment tailored especially for modern office needs.

### Executives Confer

During their three-day visit, the Royal McBee-men talked initially to Messrs. Imm, Bratton, Lindahl and Webster of Librascope. Tentative plans for the manufacturing and marketing activities of Royal Precision were drawn up.

Later Messrs. Dreher, Young and Lerner met with Wayne Blackburn, commercial department director; "Smitty" Schmidt, engineering; and Frank Hill, engineering.

It was arranged that Librascope would make a functional model of a data processing system. The model will resemble the system which, it is hoped, will eventually be produced on a large scale.

Under the new setup, as tentatively arranged, Librascope will supply "electronic hardware items." Royal McBee will supply "electro-mechanical items, such as typewriters, input and output mechanisms and other supplementary devices" for use in the system.

### Automatic Offices

The belief that accepted principles of automation may be effectively applied to office procedures is relatively new. An application of these principles has broadened the need for a simplified and flexible line of data processing equipment modestly priced. Royal Precision Corporation promises to meet this challenge. Its aim will be to develop a data handling system of compact design which will perform competitively, with the big room-size computers, while selling at a much lower price.

Librascope appears well qualified for its key role in the new venture. The Company's pioneer work in designing and developing LGP-30, a fully automatic, desk-sized, general purpose computer, should prove to be valuable background experience.

As the largest U. S. maker of typewriters and as a large producer of mechanical record keeping supplies, Royal McBee is a worthy ally for Librascope. The new endeavor should work to the mutual benefit of both firms.

## The Librazette

Copyright 1953 by Librascope, Inc. 808 Western Avenue, Glendale

**Editor** John Laubacher  
**Art Editor** Keith Kinnaird  
**News Editor** Joe Mesch  
**Photographer** Lee Duggan

### Staff Writers

Donna Snyder  
Bob Duff  
Jim Robinson

### Correspondents

Bob Day . . . . . Burbank  
Chuck Freeman . . . Santa Ana  
Bill Goepfinger.....Adjustment  
Doris Appleby.....Assembly  
Charlotte Hoskinson.....Engineering  
Marge Anton  
Manufacturing Planning  
Robert McCollum.....Model Shop  
Mac McKeague.....Personnel  
Ray McDonald.....Personnel  
Betty Meyer.....Production Control  
Millie Calitri.....Sales

# Libra Sports News



**CALCUTTA TROPHY** winner, Wally Job, receives congratulations from Frank Copple, 1955 golf chairman, for his victory over Tom Ryder in the final match of last year's golf tourney.

## Jobe Wins Golf Calcutta

The 1955 golfing season officially ended for Librascope divot diggers Saturday, Feb. 11, when Burbank's Wally Jobe defeated Tom Ryder in the final match of the 1955 Calcutta.

Even as Jobe was accepting congratulations for his stirring 4 and 3 victory over Ryder, plans were being formulated by Ed Sullivan, operations analysis, and his committee for the 1956 tourney. And among the points this year's committee was considering was a method of speeding Calcutta play.

Griffith Park's Wilson course was the scene of the Jobe-Ryder match and frost mantled the fairways and greens as the two teed off. Both players blew hot and cold during the early stages of the round, with Jobe's consistently accurate putting and his five-stroke handicap being the deciding factors.

Climax of the match came at the 14th, a long par 5. Ryder, three down at this stage, was on in three with a tremendous iron shot that halted ten feet from the pin. Jobe, on in four but lying 30 feet from the pin, then proceeded to sink his putt for a par. Since the 14th was a handicap hole, Ryder was faced with the task of sinking his putt for a birdie in order to half the hole. He missed, and when Jobe sank another long putt on the 15th to gain another split, it was all over.

Plans for the 1956 tournament are already underway and Sullivan hopes to be able to announce both the site and the date of the event by March 1. Establishing of handicaps and rules for qualifying for the event should be firmed up in time for publication in the March **Librazette**.

## Basketballers Retain Slim Chance for Title

Librascope's battling basketballers remain the sole team with a chance of heading off Weber Aircraft's third straight drive for the championship of the Burbank Industrial league.

The Precisioners five strengthened its grip on second place with a 38-16 romp over Stuart Lab Feb. 21 at the Burroughs High gym. Once again it was the torrid front line work of the two Hinton brothers, Neil and Gene, at forward and Bill Richmond at the pivot spot that led the local quintet to their eighth victory in ten games.

## Bowlers Battle For Championship

Librascope bowlers in the Thursday night league at Burbank Bowl have rounded the three-quarters pole in their race for the championship.

Entering the back stretch the league leading Four Hits and a Miss fought off the challenge of the second place We Wuz Robb'd five to lead the pack by three and one-half lengths at the conclusion of the 22nd week.

The Guzzlers and the Beavers were battling it out for the show position with the Guzzlers currently a half length up.

The rest of the field was pretty well strung out behind the leaders, and none of them appeared to offer any serious threat to the top four.

In addition to waging a ding-dong battle for third place the Beavers and Guzzlers carted off high team honors for the week—the Beavers rolling a cool 1000 for weekly high team game while the Guzzlers were blasting the pins for a 2846 series.

High individual game for the 22nd week was a fine 208 rolled by Don Blem of Pop's Five. Art Rodocker of the Go Furs and Art Mesch of the Guttersnipes both hit 203 games.

Following are the standings at the end of the 22nd week:

Team	W	L
Four Hits and a Miss..	58	30
We Wuz Robb'd .....	54½	33½
Guzzlers .....	52½	35½
Beavers .....	52	36
Bob Cats .....	49½	38½
Guttersnipes .....	49	39
Pack Rats .....	46½	41½
Go Furs .....	44	44
Super Doops .....	42½	45½
Pop's Five .....	41½	46½
Ceci's .....	37	51
Decisioners .....	36½	51½
Pinheads .....	30½	57½
Katz .....	22	66

With but four games remaining on the slate and with Weber coasting along with a perfect 10-0 record, it would take a major assist from one of Weber's remaining opponents if the Precisioners were to gain even a tie for the top spot.

Last week members of the team were still pulling for one of Weber's foes to pull a prize upset while they readied themselves for a showdown battle with the league leaders Feb. 29.

Precisioner ballplayers are convinced they can reverse the 62-61 defeat they suffered at the hands of the Weber five in the first round of play and then go on to cop the Shaughnessey play-offs.

Earlier in the month they defeated Pacific Airmotive Corp., 39-37, thus avenging an earlier 32-31 loss at the hands of the same team.

With the season almost over, Gene Hinton was far out in front in the team scoring race and was pressing Frankie De Carolies, squat Menasco sharpshooter for the league lead.

Neil Hinton and Bill Richmond were battling it out for second spot in team scoring.

Following are the standings in the Burbank Industrial league as of Feb. 21:

Team	W	L
Weber Aircraft .....	10	0
Precisioners .....	8	2
Pacific Airmotive .....	5	4
Adel Precision .....	5	4
Menasco .....	5	5
Aero-Coupling .....	3	7
Collins Radio .....	2	6
Stuart Lab .....	0	10

The basic aim of the American Cancer Society is to bring to every person in the country sufficient knowledge about cancer so that he will not lose his life needlessly.

## Anglers Schedule First '56 Outing

You get a line and I'll get a pole and we'll go to the first fishing party of 1956 sponsored by the Precisioners and scheduled for Sunday, March 4.

The party will be held on the Linda Lee which will pull out of Port Hueneme at 6:30 a.m. The Linda Lee has been completely rebuilt and now provides galley service and ample fishing space.

Tickets for the trip are \$8.00 per person. Better get your reservation in pronto so additional boat space may be arranged if the Linda Lee fills up quickly.

More fishing parties are planned for later on in the year, too—one in May, July, September and November. Read the **Librazette** and Company bulletin boards for dates and details.

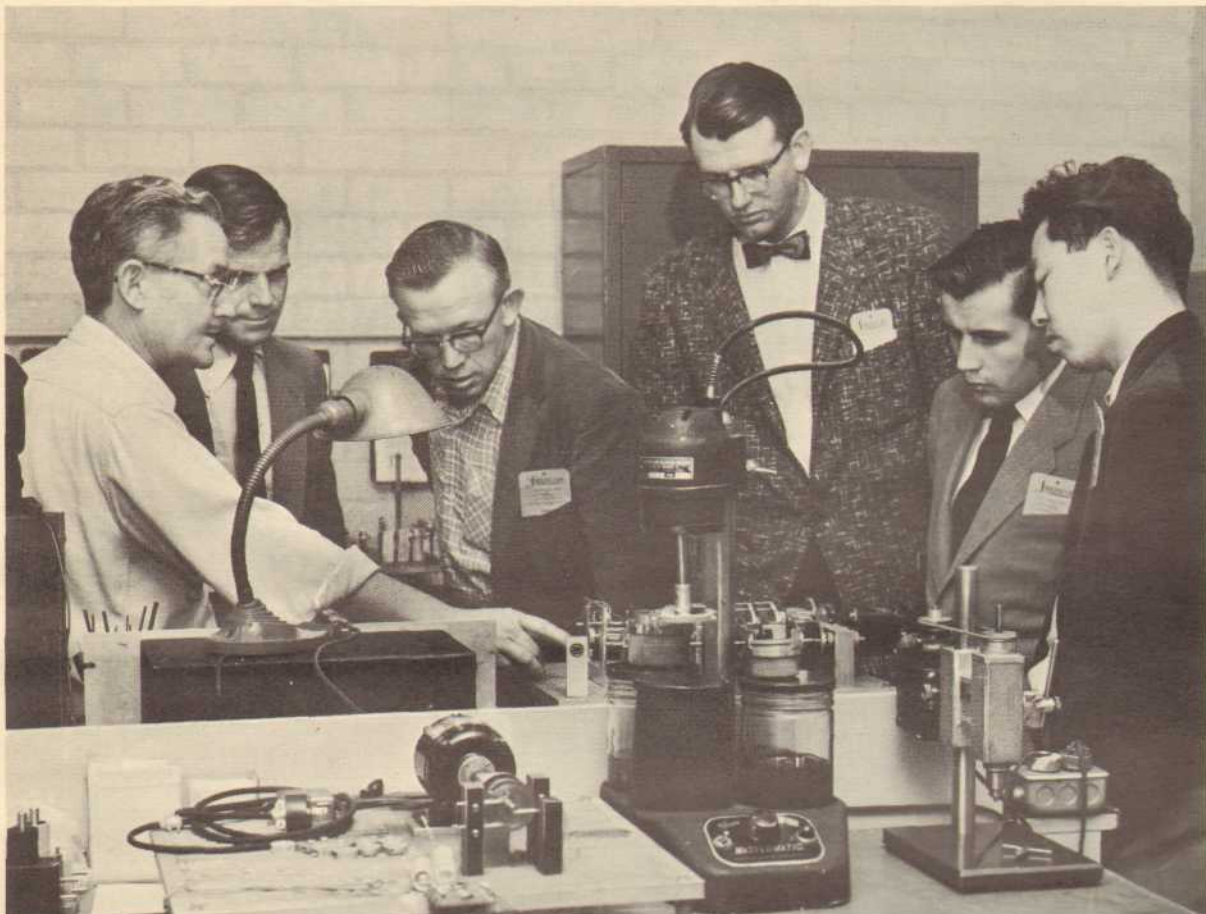
Other trips from other ports will be arranged if the fishing committee gets enough requests. Tickets for the March 1 event and for the later trips may be obtained from any of these fishing enthusiasts: Buzz Newman, quality control; John Buckens, lathes; Clayton Gary, mills; Jack Perry, tool room; Jerry Sikora, model shop; Paul Wilson, Bldg. 1 second shift; George Poppa, Bldg. 1 second shift; George Henderhan, dust free room; Chuck Flickinger, integrator assembly; Carl Miller, engineering.

If you want to get geared so the big ones won't get away, Eileen Brown in the Precisioners store says she can get fishing tackle at 40 per cent off if you order right away.

## Stork Club

**Librazette** congratulates these Company employees who recently became members of the "proud parents" clan:

Wally Chase, engineering, girl  
Ronnie Clark, production control, girl  
Jack Fries, assembly, girl  
Jack Ochoa, adjusting, boy  
Harold Richardson, production control, girl  
Ralph Rojas, machine shop, boy



**ORIENTATION TOUR** brought 19 young NOTS engineers to Librascope's Mechanical Laboratory where Roy Pedigo briefed them on the lab's major functions. At Pedigo's left, Bill McAboy, Engineering Administrative department director, listens while Roy tells four members of the group about test procedures for binary coded discs used in computer mechanisms.

## NOTS Personnel See Librascope in Action

Nineteen young engineers and scientists from NOTS—the Naval Ordnance Test Station in Pasadena—recently visited Librascope's Glendale plant as part of an extensive program of orientation and training designed to develop closer cooperation between government and industry.

Led by Frank J. Hill, Jr., Junior Professional Training Coordinator for NOTS, the group was conducted through Librascope by

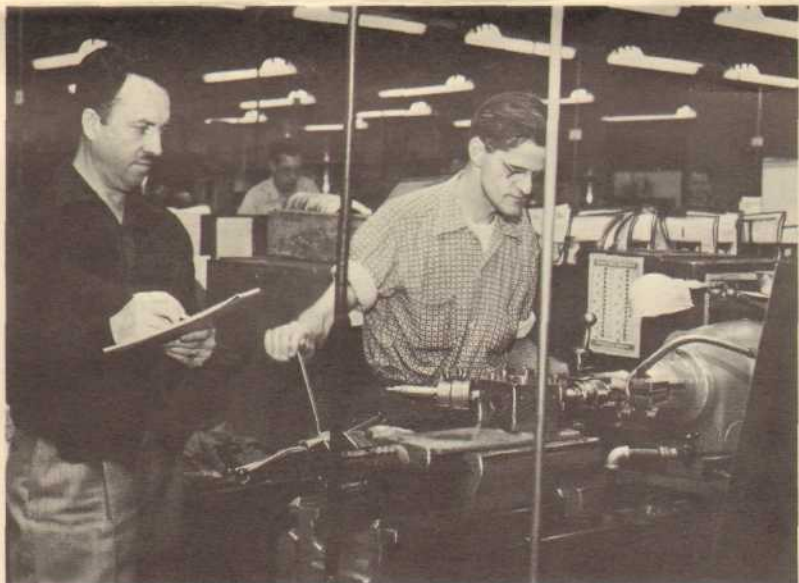
President Lewis W. Imm, Chief Engineer D. C. Webster, and Administrative Department Director Bill McAboy.

All Company departments were explained to the young professionals, and they gained insight into the intricacies of designing, developing, and manufacturing electronic computers and control systems.

Commented Mr. Imm for Librascope: "The NOTS program gives

young engineers and scientists first-hand knowledge of how government contracts are executed and should benefit all concerned through increased understanding of each other's problems."

Besides having opportunity to visit facilities of local Navy contractors, the NOTS graduate technicians, just one year out of college, attend a series of weekly lectures on subjects within their fields of scientific interest.



**HENRY SANDERS** operates a Monarch lathe No. 9 while Ed Sullivan, manufacturing administrator, gathers production data to be used by the new Operations Analysis department.

## Welcome

Librascope welcomes the following new employees:

### Assembly ...

Vivian Baden, Ilda Garner, Mary Hutchinson, Marie Jones, Winona King, Mary Madron, Josie Martin, Lorene Murphy, Arthur Nelson, Deannie Reagan, Michael Seminoff, Richard Trezise, George Whiteford, Frances Wyckoff

### Contracts Administration ...

Donna Peron

### Engineering ...

John Artman, Marshall Carter, Howard Cogan, Harold Danielson, James Dougan, William Scott, Stephen Smith, Theodore Smith, Emery Sunday, Robert Wadsworth

### Machine Shop ...

Bige Asher, John Baker, Roger Borgquist, Liborio Bufalino, David Cole, John Dossett, Salvatore Herrera, Charles Herring, Reed Johnston, James Jordan, Harry Knapp, Joseph La Guardia, Joe Marquez, Manual Marquez, Darwin Maynard, Francis Nicholas, Ralph Rojas,

Harold Sewell, Lewis Simpson, Don Skellie, Cecil Spencer, Jose Tafoya, Donald Vaughn, Terrol Ward

### Manufacturing Planning ...

Velma Colton, Edward Dalen, Vivian Rodgers

### Model Shop ...

Meredith Chabino, Arthur Mayne, Jasper Trevett

### Office Services ...

Karyll Grimes, Frances Rose

### Toolroom ...

William Roberts

## Library News

Hilda Keesling, Precisioneer Librarian, lists these among new books available to company employees:

Andersonville  
The Last Hurrah  
Gift from the Sea  
Shad Run  
Valley of the Vines  
Peace at Bowling Green  
Farewell to Valley Forge  
The Treasure of Pleasant Valley  
Broken Shield  
These Lovers Fled Away  
Lincoln's Sons  
Island in the Sun

## Streamlining

(Continued from page 1)

The general approach to the project is as follows:

A member or members of the Operations Analysis department will conduct an "on-the-spot" study of the operation or area under consideration. He will make observations in writing on all factors which affect that operation. This report of facts will be entered on forms especially adapted to the area of investigation.

The detailed report prepared by the observer is then reviewed individually by each Operations Analysis member who prepares preliminary recommendations. These preliminary recommendations are in turn reviewed by Operations Analysis members as a group and final recommendations are made and entered in a final report.

The final report is channeled to the vice-president in charge of operations for review and approval after which it goes to the Operating Committee for information and comment. It is then given to those responsible for taking the necessary action. After the required action has taken place the Operations Analysis department follows up to see what the results have been.

In conclusion, Runion stated that his department is out to help every unit in the organization make the showing it is capable of when equipped with the proper tools and "know-how." To this end he asks your cooperation and will welcome your suggestions when his people come to you.

## GPE Firm Leases Plant

Wall Street Journal reports that Precision Technology, Inc., a wholly-owned subsidiary of General Precision Equipment Corp., has leased a 7000 square foot plant in Livermore, California.

Precision Technology, Inc. has been operating on a sub-contract basis with the University of California Radiation Laboratory in Livermore. The company develops and produces scientific equipment.

# Company Club News

## Camera Clubbers Elect C. Goldstein New Prexy

Among the several Librascope organizations which elected new officers in January was the Shutter Clique Camera Club.

Cesar Goldstein, tool shop, now heads the group. He is assisted by Jim Marfine, machine shop, treasurer; and Walt Mateuski, model shop, secretary.

After the election and installation ceremonies the members participated in a discussion of composition, harmony and proper exposure for color film. The meeting was held at the Burbank home of Ed Pusi, optical assembly.

The camera club's annual dinner was held at Robaire's Restaurant late in 1955. Members and

their wives enjoyed a variety of French Tunisian style dinners. They were joined by these guests of the club: Mr. and Mrs. John Delle Fave, and Mr. and Mrs. Lewt of Pasadena. John Delle Fave, manufacturing planning, represented the Precisioners organization which sponsors the camera club.

High point of the evening came when Mr. Lewt, a specialist in stereo-photography, projected slides and gave a very enlightening narration on his specialty.

Next meeting of the Shutter Clique Camera Club is scheduled for March 14. All Librascope employees, amateur or pro photographers or those just freshly bitten by the camera bug, are welcome to attend. Contact one of the club's officers for further details on the meeting.

## Sharpshooters Seek Sharp Shooting Site

Anyone know of a firing range rattling around somewhere in somebody's big backyard, or more likely, nestled against the side of a mountain?

If you do know of an available firing range, you can bail the Librascope Gun Club out of its present inactivity. What they need is any home on any range suitable for pistols, large and small bore, and for rifles, too.

It was politics as usual, despite the club's inactivity, when these officers were elected: Roy Gombert, model shop, president; Jack Perry, tool design, vice-president; Ross Hazeltine, assembly, secretary-treasurer; Pat Lombardi, machine shop, range master.

Planning for coming events continues unabated. Watch Company bulletin boards for details of competitive shoots scheduled for the future.

## Toastmasters Install Officers;

### Receive Charter at Meeting

Librascope Toastmasters became Club No. 1978 of Toastmasters International when the group received its official charter Feb. 15 at the Pickwick Restaurant in Burbank. Several notables of both Toastmasters International and Eagle Rock Club No. 109, sponsors of the new Librascope affiliate, attended the charter party.

These new officers were installed during the evening: Sid Briggs, president; Walt Sertic, educational vice-president; Art Pederson, administrative vice-president; Bill Greer, secretary; Bill Brown, treasurer; Bob Whitcomb, sergeant-at-arms.

At the club's next meeting an award cup will be presented to the member voted "best speaker." Lewis Barth, former president of the sponsoring Eagle Rock Toastmasters Club, said his organization would donate the cup.

Thirty active members (the limit under the charter) and two associate members now belong to the Librascope Toastmasters Club.

## Pastor to Speak on Lent

The Reverend Karl E. Kniseley of the First Lutheran Church of Glendale has a date with the Librascope Bible Study group March 14. During the regular noon-hour meeting period, he will speak on the significance of Lent.

## AT NO EXTRA COST

# Insurance Coverage Broadened

Librascope employees are now provided with greater group insurance coverage as a result of a liberalized program.

Booklets outlining the full group insurance coverages will be available shortly, according to Mac McKeague, personnel manager.

In essence, the new policy provides broader coverage, at no additional cost to employees, in the following categories:

1. Fees for X-rays and lab expenses for employees and dependents have been placed on a scheduled basis and changed from a \$25 maximum coverage in one calendar year to a \$50 maximum for a like period.

2. Hospitalization coverage has been increased. Under the old set-up, hospital room and board payments were made for a maximum of 31 days. An additional \$100 was provided for incidental expenses. Under the new coverage, a \$1500 fund is available for hospital room and board and incidental expenses. Maximum per day payment for

room and board is \$14 for both employees and dependents.

3. Payment for doctor's calls has also been provided for in the new policy. A maximum payment of \$5 per call will be made for hospital calls for both employees and dependents. Coverage begins at the first call. Payment for house and office calls is limited to employees only, coverage to start with the third call. Payment up to \$5 per call for house calls and up to \$3 per call for office calls is provided.

4. Polio coverage up to a maximum of \$5,000 is a new addition to the policy and covers both employees and dependents.

5. Supplementary accident benefits are now available to an employee or dependent. These benefits provide up to \$300 for hospital, surgical and medical services in addition to coverages already mentioned.

6. Maximum coverage under the surgery schedule has been increased from \$300 to \$450 for employees and dependents.