

LIBRAZETTE

AN EXCHANGE OF NEWS AND KNOWLEDGE

VOL. 10, NO. 3

JANUARY-FEBRUARY, 1963

San Marcos Wins \$950,000 AF Contract; Calls For Changes in ASN-24 (V) Systems

(SAN MARCOS) A \$950,000 product improvement program for the AN/ASN-24 (V) computer system for the Lockheed built C-141 jet powered transport-cargo plane, has been awarded to the San Marcos branch by the Aeronautical Systems Division of the Air Force.

The program calls for the design and production of two flight test systems embracing Air Force and San Marcos improvements in input/output equipment, aircraft control and navigation tasks and programming.

Substitution of a solid-state converter package for a number of digital-analog electromechanical modules is a major part of the program.

The improved computer will provide: 1) Takeoff monitor capability; 2) Cruise control and full monitoring for maximum range of safe flying; 3) Automatic computation of release points for troop and

cargo air-drop; 4) Vertical letdown to assist initiation of landing.

P. D. Georgantas is Project Manager of the improvement effort and T. M. Schindler is Project Engineer. Sen-Eng H. E. Beach is responsible for developing the solid-state converter and Sen-Eng J. E. Robbins heads the added capabilities study.

W. C. Ferguson is project administrator.

Dates Set for Three Management Meetings

(GLENDALE) Date of the Annual Management Dinner meeting for the Glendale-Burbank area has been set for Monday evening, Feb 18, at the Castaways restaurant, 1250 Harvard Road, Burbank.

The next night, the annual management meeting for the San Marcos branch will be held at the Fireside Inn, 435 West Washington St., Escondido. And on Wednesday evening, Feb 20, the Sunnyvale branch will hold its annual meeting at L'Omelette, 4170 El Camino Real, Palo Alto.

President W. E. Bratton, Vice President M. L. Lindahl and other company officials will report on 1962 operations and plans for the future.

Glendale Awarded Optical Contracts

(GLENDALE) Two of the nation's biggest defense contractors have called upon the electro-optical capabilities of the Glendale branch, to design and build pilot sights and viewfinders for them. The devices will form part of the equipment of a newly-designed airplane and a helicopter being built for the U.S. and for a foreign government.

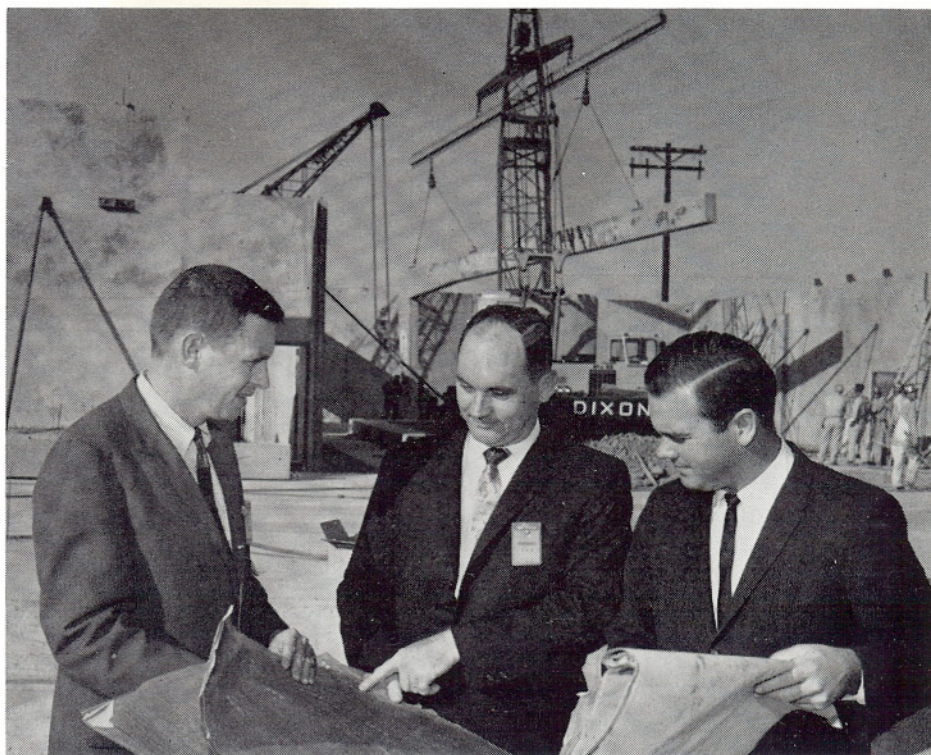
Hughes Aircraft has commissioned the design and fabrication of a prototype lead computing sight for a Swiss Air Force fighter-bomber. Initial funding is for \$52,000; production potential, if the sight meets all requirements, is well over 100 units, according to D. E. Roof, Manager of Glendale's electro-mechanical-optical engineering group.

Kollsman Instrument Corp., winner of a prime contract for the U.S. Air Force OR-370 program, turned to Glendale branch to be a subcontractor. Glendale will design and produce viewfinders for the navigator and photographer of the RC-135 geodetic photo mapping and survey plane.

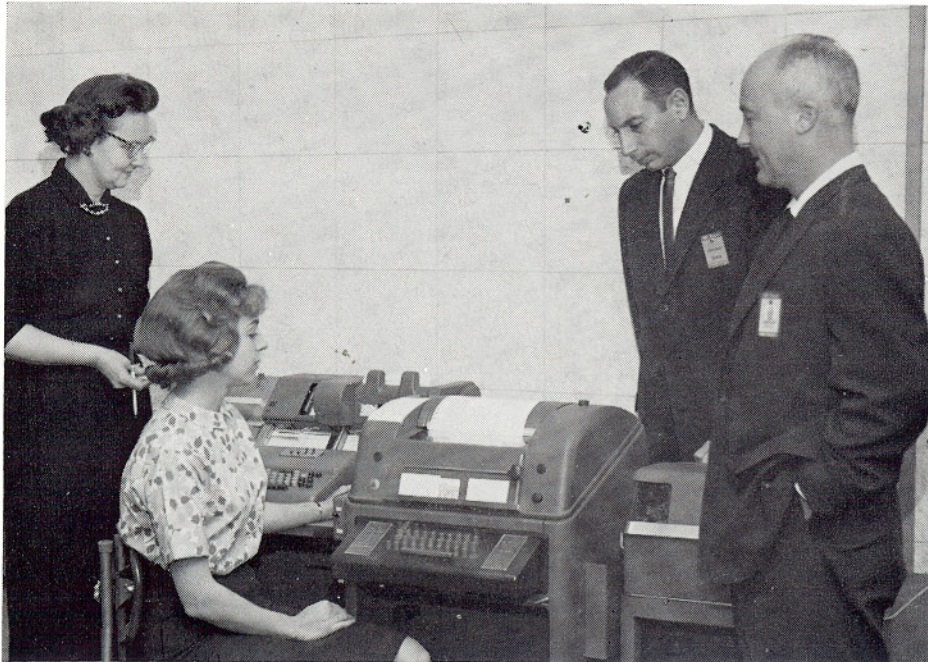
Initial funding, for phase one study and design, is for \$44,000.

Portions of the work on the contracts

(Continued on Page 5)



THE NEWEST BUILDING — H. E. Beatty, Operations Mgr, Dr. Alfred Schmitt, Chief Engineer, and Dr. D. L. Farr, San Marcos Branch Mgr, scan the blueprint of Bldg D-34, as construction on the 28,500-foot building moves along on schedule. In background, the huge pre-cast wall panels, weighing as much as 27 tons each, are seen going into place. The new facility, which will house general assembly, shipping, and quality control, will be ready for occupancy sometime in March.



NEW TELEPROCESSING HOOKUP. Supvr Edith Steele, Data Processing Preparation, Key Punch Operator Wilma Newman, Systems Analyst Antonio Lamia and L. G. Cahill, Telecommunications Supvr, look over new electronic link with San Marcos and Sunnyvale branches. Time card data for payroll and accounting functions at ISG headquarters, moves over wires from branches to Glendale, is reproduced on punched cards here. Cards are fed into computer to ultimately produce paychecks and cost reports. New operation saves days over former mailing and messenger service.

Appoint Cohen Purchasing Head

(SUNNYVALE) Phil Cohen, who took what he thought would be a temporary job as shipping and receiving clerk with Librascope nine years ago was appointed Purchasing Agent of the Sunnyvale branch effective Jan. 21.

"The first job was temporary, but my connection with Librascope became something else as I became aware of the many opportunities that existed," Cohen recalled to LIBRAZETTE.

Opportunity, plus the Librascope Tuition Refund Plan help in financing college study, helped Cohen progress to his present position, he said.

"The Plan is a wonderful thing. The Company says to you: 'If you're willing to invest the time, we'll invest the money. We'll gamble that our mutual investment will pay off for both of us.'

"A whole new world opened up for me. I studied industrial supervision, personnel management, human relations, public speaking and psychology, but I also took such non-business courses as world history, biology, political science, English composition, algebra, anthropology, philosophy, archaeology and the history of art. Every one of them has been a help to me in my job."

In his nine-plus years with Librascope Cohen has held nine jobs, was working in the machine shop area when he started pointing for a post in Purchasing.

Shortly after his appointment as a Buyer Cohen proposed wider use of a practice known as "stockless inventory" purchasing. With the help of his Supervisor and others, the practice was applied to his purchasing area, with substantial savings to the company resulting.

Not long afterwards Cohen was promoted to Senior Buyer and given more responsibility. This led to the offer from Sunnyvale.

The first order of business in the new job will be to learn it completely, says Cohen, then—back to the books at night at one of the colleges in the Sunnyvale area.

"There's an awful lot left for me to learn," he says.



Teleprocessing System To Speed Paycheck, Other Cost Data, To ISG Headquarters

(GLENDALE) Vital company operations information will move faster and pay-checks for the San Marcos and Sunnyvale branches will have a built-in guarantee against late delivery, as the result of a new communications link between Information Systems Group headquarters and out-of-town branches.

Within a few weeks a new data transmission system, called teleprocessing, is expected to be in full operation, tying San Marcos and Sunnyvale to the ISG Electronic Data Processing center here.

Payroll, labor-cost-by-job and accounts payable data will move with the speed of light—186,000 miles per second—utilizing special data processing equipment and leased telephone lines of the Pacific Telephone company.

THE TELEPROCESSING system was designed by P. E. Mobley, manager of ISG data processing, with the aid of L. G. Cahill, ISG telecommunications supervisor. Development was turned over by Mobley to Tony Lamia, systems analyst, who joined ISG in December.

Here's how the system will work in handling payroll and labor cost distribution, as explained to LIBRAZETTE by Lamia.

Information on employee time cards is transferred to punched cards by the branches, then fed into a transmitter hooked up to a receiver at Glendale. The transmitted data, in the form of electrical impulses, produces a new set of

punched cards at the Glendale terminus.

THESE CARDS then are fed into a computer, which separates the information—job number, hours worked, cost, etc.—and stores these items of information of magnetic tape.

At the end of the week, or whenever desired, the computer and other data processing equipment at Glendale totalizes the accumulated data, prints out detailed job cost reports—and the payroll checks.

THE SYSTEM also will process accounts payable data (bills from vendors, etc) distributing charges according to jobs; this data is incorporated in various reports to management along with the labor cost data.

The new system has many advantages over previous practices, according to Mobley. With data being received daily instead of weekly, the computer workload is better distributed; formerly the time cards and other source documents were mailed to Glendale, with the risk of loss in transit.

In the works, a teleprocessing link with GPI headquarters at Tarrytown.

In Community Service

Frederick A. Klein, Supvr of Test Equipment design, Glen-Eng, has been elected President of the Hollywoodland Improvement Ass'n, after serving two years as member of the board of directors. Klein also has been named a member of Mayor Yorty's Citizens Advisory Committee.

Presenting: Commercial Computer Sales

(BURBANK) Within the Commercial Computer division of the Information Systems Group, is a group of men and women new to our organization—the Commercial Computer Sales organization headed by CC Division Vice-Pres George C. Ensslin. They are headquartered at 101 West Alameda, Burbank.

COMMERCIAL COMPUTER Sales is one of three branches in the Commercial Computer division, the other two being the Components and Special Devices branch and the Data Processing Systems branch.

CC Sales functions in all areas of computer system marketing for the Data Processing Systems branch, except military. Within its areas of responsibility it has many functions, among which are:

Operation of 20 district sales offices throughout the U.S., sales support, product applications analysis, contract programming, product support, standard programming, field service, publication of operating and sales promotion manuals, market development (including market planning, market and applications research, customer training, sales training and sales promotion) and technical engineering support.

THE HEADQUARTERS staff of the new organization comes from all points of the compass. Many individuals had been with Royal McBee Corp., or Royal Precision units on the West Coast; others transferred from the Chicago, New York City and Washington operations of Royal Precision.

Vice-Pres Ensslin, appropriately for the head of a sales organization, was the top computer salesman in the Royal McBee-Royal Precision organizations. He reports to Division President R. E. Hastings.

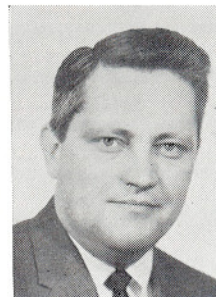
The management group reporting to Ensslin is a blend of former Royal McBee-Royal Precision and Librascope "old hands." Sales Administration is managed by R. C. McCormick (RMCB Tarrytown); Technical Engineering Support is headed by R. L. McIntyre (Lib); Field Analysis Support is managed by D. J. Kelly (RMCB) from New York City; Programming and Publications is headed by D. T.



MCCORMICK



McINTYRE



KELLY



HERRMAN

Herrman (RMCB Chicago); Market Development and Planning is run by Phil Zenner (RMCB-Chicago-Wash).

MANAGEMENT OF the sales organization in the field and sales support is in the hands of R. E. Burgess (RPC-Tarrytown), who is responsible for his



GEORGE ENSSLIN

section's 20 district sales offices, applications analysis and contract programming.

W. L. Chase (Lib-Burbank) is Manager of Field Service, with a staff of 75 customer service engineers operating out of six regional service offices. He also is responsible for custom modification to

When GPI purchased the Royal McBee Corp's interest in Royal Precision it formed the Commercial Computer Division and staffed the division with some of the former members of the Royal McBee computer marketing organization.

In the formation of the Information Systems Group out of what had been the Burbank units of the Librascope Division, the Commercial Computer Division was brought to Burbank; its name was applied to all Burbank-located facilities of ISG, and the marketing unit became Commercial Computer Sales.

The lineup now:

- Commercial Computer Division
- Data Processing Systems Br
- Components & Special
- Devices Br
- Commercial Computer Sales
- Librascope Division
- Glendale Branch
- San Marcos Branch
- Sunnyvale Branch
- Information Systems Offices
- ISG Research Center

fit CCD products to special customer needs.

A new section—Process Sales—is managed by Martin Lyford, formerly a Lib-Burbank consultant. Lyford heads a staff of applications engineers whose area of operations embraces all industry where computers could be usefully employed to control manufacturing processes.

ISG PRESIDENT W. E. Bratton, in commenting on the restructuring which established the two Divisions and brought CC Sales into the ISG family, said:

"I consider the blending of the Commercial Computer organization and Librascope as achieving an objective we have had for years. Tying the two together will create a better balance between our military and commercial business."

Bratton also said that future product development or improvements will now include the direct voice of marketing as an important guide to product design.



ZENNER



BURGESS



CHASE



LYFORD



A breakthrough in missile and space-vehicle guidance research was revealed recently, when the GPL Division of General Precision's Aerospace Group announced the development of a research model for a nuclear gyroscope.

The nuclear gyro, which utilizes the spin of the atom, is frictionless, has no bearings to wear out, and has no balanced parts to be deflected or disturbed. Because of its inherent resistance to severe vibrations, acceleration force and shock, the nuclear gyro can lead to significant advances in navigation and guidance for aircraft, space vehicles and large missile boosters.

The nuclear gyro has been under study by GPI research groups since 1957.

* * * *

The Link Division of GPI's Simulation & Control Group received an Air Force contract for more than \$2 million for two additional C-130E Cargo Transport Flight Simulators. Both the Tactical Air Command (TAC) and the Military Air Transport Service (MATs) will use the simulator-trainers.

Link also announced the receipt of a letter contract for more than \$1 million from McDonnell Aircraft for two computers to be used on two Gemini space-mission trainers. The contract also calls for the development of computer programs which will accurately and completely simulate the various phases of space flight.

* * * *

Col. Bernt Balchen, noted polar explorer and aviator, has joined GPI as Special Assistant to R. J. Maroni, Vice President of Government Marketing, and will assist all GPI divisions in their technical systems research.

Col. Balchen (USAF-Ret), with over 40 years experience in commercial and military aviation, served as pilot for Admiral Byrd in his pioneering flights over the South Pole and the Atlantic Ocean. For the past three years he has served as a consultant to General Precision Aerospace's GPL Division.

LIBRAZETTE is published for all employees of the Information Systems Group, GPI, to keep them informed about Group and GPI plans, policies, products and personnel. LIBRAZETTE is produced by the Communications section, Information Systems Group, at 808 Western Avenue, Glendale 1, Calif. © 1963 by Information Systems Group, General Precision, Inc.

Editor: W. K. Keith

Assistant Editor: T. L. Ryan

Correspondents: Dan Clark,
San Marcos;
R. L. Raschen,
Sunnyvale

Art and photographic services are provided by the Publications Section, Glendale Branch: Keith Kinnaird, Art Director; P. C. Kane, Supervisor, Art Services; Special Art, J. R. Norwood and J. W. Erickson; Photo Layout, A. M. Cook; Photography, E. H. Crawford and J. A. Avera.



GIFT TO HEAR—Librascope President D. C. Webster is shown presenting a check for \$1465 to Dr. Ciwa Griffiths, director and founder of the HEAR Foundation of Los Angeles. The check was the result of generous employee participation in our annual Christmas Card Fund, sponsored by the Precisioneers. Flanking Webster and Dr. Griffiths are Louise Morton (left), president of the Precisioneers, and Jim Weatherill, 1962 fund chairman.

Annual Precisioneer Campaign Earns \$1,465 Gift For HEAR

(GLENDALE) After all our Christmas tree posters were taken down, the envelopes opened and the money counted, a post-Christmas gift amounting to \$1465 was presented to the HEAR Foundation of Los Angeles.

The annual collection, sponsored by the Precisioneers, received wholehearted support throughout the Information Systems Group organization, with employees from both Librascope and Commercial Computer Divisions contributing generously.

On receiving the employee gift, Dr. Ciwa Griffiths, HEAR Director, told LIBRAZETTE:

"Please express our sincere gratitude to all the people who made this wonderful gift possible. Just as in past years, your donation will be put to use in the research and development of new, sorely needed auditory equipment. High on our priority list is the development of a more efficient hearing aid."

The man who will be on the R&D end for most HEAR projects is engineer Leonard Ludvigsen of Components & Special Devices branch, CCD. For several years now, Ludvigsen has served as a one-man technical task force in the development of new auditory equipment for use in the Foundation's many programs.

Seconding Dr. Griffiths' expression of gratitude to all ISG employees was Louise Morton, outgoing president of the Precisioneers. "I would like to pay a special thank you to the many people who contributed their own time and effort in making the Christmas Card Fund such a success," Louise stated.

Up for special praise was Jim Weatherill, records retention coordinator, who was chairman for the event; Steve Gates and Mildred Galpin from the Glendale silk screen section, who actually made the posters; and Angelo Pizzo, Glen-Publications, who provided the original art work for the colorful displays.



FROM THE ROSTRUM

Herbert G. Jacks, senior engineer in Librascope Reliability, was a participant in one of the technical sessions at the two-day 1963 National Winter Convention on Military Electronics, held recently in Los Angeles. His subject, in the form of a technical paper, was the impact of reliability and maintainability on an ASW fire control system.

* * * *

"The Application of Electronics to Photogrammetry" was the subject of a presentation by Glendale engineers Phil Salomon and Bob Shone at a recent meeting of the San Fernando Valley chapter of the Institute of Electrical and Electronic Engineers (IEEE). The subject was a technical paper co-authored by the two engineers.

\$2100 Paid Out In Patent Awards

A total of \$2100 in patent incentive awards have been paid by the company to employees since the plan was revised last July, according to G. W. Seevers, head of the Patent Section of the Legal Department.

The \$100 awards are made to inventors who execute a U.S. patent application and assign it to the company. Award winners to date include:

Glendale Branch—Mel Smokler, Grey Stone (3), Verne Olson, and Chester Brandon from Washington Engineering.

ISG Research Center—Carl Lekven (2), Dick Martel.

Components & Special Devices—Leonard Ludvigsen, D. L. Palmer, and Willard Opocensky.

San Marcos—Arv Trostrud, Steve Kinsinger, and R. L. Simpson.

Data Processing Systems—John Felts, and Charles Brown (2).

Two former Sunnyvale employees—Joe Simon and Wayne Lowrance—also received patent awards.



AWARD PRESENTED—Jerry Deitz, Glendale assistant chief engineer (left), presents a company check to project manager Mel Smokler, the most recent recipient of the \$100 patent incentive award. For other recent winners, see accompanying story.

Optics Contract . . .

(Continued from Page 1)

will be done in Glendale's Washington engineering office, by its Chief Engineer, Chester Brandon, and Staff Engineer Fred Merkel. They will be aided by Sen-Eng B. A. Kusnick and Design Specialist Edward Edwards of Glendale.

Other portions of the engineering and prototype work will be performed in Glendale by engineers and design specialists of the Mechanical-Optical Design unit headed by Supvr T. A. Miller.

Gonia Heads Advanced Applications

(GLENDALE) Appointment of Charles Gonia as Manager of the Advanced Applications section of Glendale Engineering, is announced by Chief Engineer A. D. Larson.

Purposes of the section are to act as an advisory group to Larson in establishing technical and business objectives for the Engineering department; to provide technical consulting services, as needed by the design groups; to aid in seeking and evaluating potential new business; to assist in proposal activities; to undertake special projects and to perform or direct company or customer financed study or design programs.

Members of the section are Staff Engineers Dr. F. G. Primozech, J. A. Rummel, R. T. Shone, J. T. Ator, D. E. Hartig, G. E. Stone and C. W. Hammill, and Senior Engineers B. R. Billoon and J. J. Mills.

Each member of the section is an expert in one or more of the following fields:

Systems and equipment design engineering; digital and analog computer systems; optics and image projection systems; sensory data processing systems and tactical command and control systems.

New Buying Plan Promises \$100,000 Glendale Saving

An estimated \$100,000 savings in operating costs, through the revision of a single procurement practice, is forecast for this year by Glendale Materiel Manager W. J. Flanagan.

The revision is to be applied to one of the largest single types of procurement in the branch, that of standard electronics hardware, such as diodes, transistors, connectors, tubes, batteries and the like.

Under this plan and in return for the provision of space and utilities in Bldg A17, a selected supplier now provides a store of items from which Librascope will withdraw as requirements occur. The selected supplier can furnish approximately 70% of Glendale's electronic hardware requirements for production and engineering use.

It is estimated that the number of purchase orders placed will be reduced by 3,000 during 1963.

According to J. E. Hachtel, Glendale purchasing agent, who developed the new procurement concept, the system will work like this:



FLANAGAN



HACHTEL

Glendale purchasing will submit a list of total requirements for a given contract, developed from the stated requirements of Engineering and Production Control, to the "in-plant salesroom" of the supplier. The list will be submitted early enough to permit the supplier to accumulate inventory against the dates of issuance.

The material will be inspected by Receiving Inspection prior to forwarding to the parts room, thus be ready for im-

mediate use. Rejected material will be replaced by the supplier, without necessity for rejection reports. Since the inventory in the "salesroom" is not Glendale's property until it is requisitioned, any item can be returned to the supplier without cost to the branch. There will be no "obsolete inventory."

"Savings will result in other areas of material management, too," Hachtel said in outlining the plan. "Glendale will be relieved of the burden of inventory control and accounting on these items. Less money will be tied up in inventory and a most important ingredient to successful operation—on time delivery of material—will be achieved."

The new system will go into operation Jan. 2. Work on the supplier's "salesroom" in Bldg A17 will start in mid-December. The supplier will be Hollywood Radio and Electronics, a subsidiary of Terminal Hudson, Inc., of New York. The same organization now services Kearfott Division of GPI and Hughes Aircraft, Fullerton.



Herb Hansen

(GLENDALE) The Supervisory Selection Plan, the in-plant search for new supervisory talent, went into an engineering area for the first time recently and assisted in the selection of two new supervisors in Glendale Engineering, then followed with the selection of a new general foreman.

The first selected was Herb Hansen, formerly a Senior Liaison Engineer in the section he now heads. He reports to Frank Copple, Mgr. Manufacturing Support, the man who made the final selection.

COPPLE, ALONG with Jerry Deitz, assistant chief engineer, were the technical members of the SSP board reviewing the four candidates for the position. The remainder of the board was comprised of R. R. McDonald, Glendale Personnel Mgr., W. P. Strong, Training Director, and C. E. Talbot, Employment Supvr.

Commenting on the selection of Hansen, Copple told **LIBRAZETTE**: "It was a difficult decision to make. All of the candidates proved to be of high caliber, both in technical knowledge and qualities of leadership. However, there was only one opening."

The man Copple finally selected brings to his new supervisory position an interesting and varied background. Before deciding on an engineering career, Hansen spent four years as a switchman with the Wabash RR, and another four years in the Marine Corps during the Korean War. With five battle stars to his credit, S/Sgt Hansen was part of the invasion force at the Inchon landing.

FOLLOWING HIS service stint, Hansen made a serious self-appraisal and decided to enter college. "I wasn't interested in railroading as a life career, and I was prepared to do little else," Hansen recalls. "It was at that point that an education suddenly became very important."

Selecting an engineering curriculum, Hansen began his college education at Milliken University in Illinois, then came west and attended El Camino Junior College, where he received his AA degree. He then enrolled at Los Angeles State

Supervisory Selections:

Add Three to Growing Roster

College and received his BSEE in June '59—the same month that he began his Librascope career.

HANSEN JOINED Glendale Production Engineering and was assigned to the Polaris project. As he became familiar with the program and its engineering problems, he assumed more responsibilities. Following a short period as a design engineer, Hansen transferred to Liaison Engineering as a Senior Liaison Engineer.

In addition to his busy work load, Hansen has found time to continue his education at night school through the company Educational Refund Plan. He has presently completed 15 units for his MS in Industrial Management.

AND WHEN he isn't working or attending school, Hansen is teaching. He is currently instructing in electronics in the adult education department of the Burbank school system.

Hansen, who is married and the father of three children, looks forward to meeting the challenges and responsibilities of his new position. And if his past record can serve as a valid criterion, he will meet them successfully.



Gray Lange

Following closely on the heels of Hansen's appointment was the selection of a second engineering supervisor.

Gray E. Lange, senior engineer in Glendale Systems Engineering, was selected as the new supervisor of Electrical Design, reporting to Dwight E. Roof, Mgr. Electro-Mechanical—Optical Engineering.

LANGE, WHO has been a member of Glendale Engineering since 1955, was one of seven original candidates,—later narrowed to three finalists—considered for the post by the Supervisory Selection Board.

The SSP board who reviewed the candidates for the supervisory position in-

cluded: Harlan Buseth, board chairman; Jerry Deitz, ass't chief engineer; Glen Seltzer, Eng employment supvr; Wayne Strong, training director, and Dwight Roof, who made the final selection.

Lange joined the company as a junior engineer in what was then Shipboard Engineering. His first assignment was on the Rocket Assist Torpedo (RAT) project, followed by ASROC and SUBROC. In 1957, he became an engineer, and two years later, was named senior engineer.

WHILE ASSIGNED to the documentation effort on the SUBROC program, Lange made a notable achievement for himself and for the company by developing—much of it on his own time—a method of documenting wiring lists through the use of data processing equipment. The new time-saving technique replaces the wiring diagram with an easy-to-follow tabulated wire listing.

A pre-WW II navyman for four years, Lange returned to the military in 1943, this time as an Army Air Corps transport pilot in the South Pacific.

Following his discharge in 1947, he joined Southern California Edison Co., as a construction electrician, then enrolled at USC with a physics-math major.

CONTINUING HIS education while at Librascope, Lange received his BA in Anthropology in June, 1960. Why anthropology? Says Lange: "Although I had plenty of credits in math and physics, it turned out that I had more in anthropology. I'm probably the only anthropologist-engineer at Librascope."

Mary Barnes

Mary E. (for Elizabeth) Barnes is the first woman General Foreman in the company's history.

The factors that led to her appointment are the same that previously had promoted her to Leadman and Foreman, the comments made in performance reviews

(Continued on Page 10)

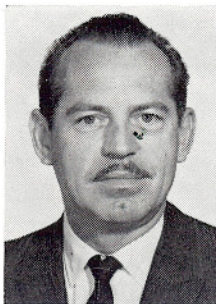




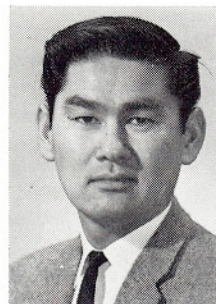
BROWDER



RUBIN



NICULA



TANAKA



NEW FACES

James W. Browder this month was appointed Marketing Manager for Space Electronics and Avionics Systems and for Space Information Systems of the Librascope Division marketing operation. He reports to the Vice President of Marketing, R. O. Vaughan.

Browder comes to Librascope from the Electronics Division of Parsons Engineering where he was Acting Marketing Manager and Manager of Military Systems. Earlier he was President of Inoar Electronics Corporation, San Diego, and Vice President of the Western Design Division of U. S. Industries, Santa Barbara.

For 12 years Browder was a Supervisory Electronics Scientist at the Navy Electronics Laboratory, San Diego, and Bureau of Ships, Washington, D. C. He was educated in electrical engineering at the University of Oklahoma and the University of California, also Executive Management at Stanford.

Browder, who is married and the father of two, makes his home in San Diego. He operates from the San Marcos Branch.



Dr. Theodore Rubin was recently added to the engineering roster of the San Marcos branch as a staff engineer reporting to Dr. Alfred Schmitt, chief engineer and acting director of advanced technology. He is presently assigned to the pre-proposal study of a space information system for a self-deploying space station.

Dr. Rubin joins Librascope following three years as a staff consultant for Remington Rand. He was formerly a senior research engineer with General Dynamics/Convair, assigned to the SAGE program.

A native Pennsylvanian, Dr. Rubin received his PhD degree in statistics from the University of Pittsburgh in 1955. Upon receipt of his doctorate degree, he spent a year as a research associate with the University's graduate school of public health.

Dr. Rubin is a member of the American Mathematics Society, and the American Association for the Advancement of Science. He is married, has three children, and makes his home in San Diego.

Aurel D. Nicula has joined the electronic packaging design section of Glendale Engineering as a senior engineer, reporting to Supvr J. L. Saiers.

Nicula comes to Librascope following seven years with three branches of Bendix Corp's Pacific Division. Most recently he served as chief mechanical engineer with the military navigation branch, in charge of packaging design for a new mobile navigation system for the Army Signal Corps.

Previously, he spent four years in engineering design with the Lincoln-Mercury Division of Ford Motor Co.

Born in the Roumanian state of Transylvania, Nicula attended three universities in Bucharest. He received a BA in languages from the University of Letters, a BSME from the Polytechnic School of Engineering, and his MSME from the Roumanian Royal Military Academy—"the equivalent of the American West Point."

During World War II, Nicula was a Major in the Roumanian Army in charge of an engineering battalion. He came to the U.S. in 1950 and became a naturalized citizen the following year.

A resident of Northridge, Nicula is married and the father of two girls and a boy.



Engineer Akira A. Tanaka has joined the staff of the Glendale branch reliability engineering section as a member of Supvr W. K. Emery's group.

Tanaka, a June '60 BSEE graduate from Los Angeles State College, previously was with Nortronics' reliability group and was a designer of test equipment for North American Aviation. His special field of interest is semiconductors.

Tanaka also attended Santa Monica City College and has taken post graduate work with UCLA extension division. He makes his home in Playa Del Rey.

Continuing to Grow

(SAN MARCOS) Employment continues to rise at the San Marcos branch, according to Personnel Manager W. P. Sertic. Hires during January and the first week of February have brought the total employment up to 377, Sertic reports.

New Leasing Plan For LGP-30 Users

(BURBANK) A new, more economical plan for new computer users who lease LGP-30 general purpose computers, was announced Feb 1 by Vice-Pres G. C. Ensslin of Commercial Computer Sales. The plan has special value to customers with widely fluctuating computer time requirements.

The new plan offers the LGP-30 on a minimum fee, plus hourly charges for all hours over 50. This, says Ensslin, eliminates costly "idle time." Customers, after using the 50 hours provided under the monthly minimum charge, will pay only for the hours that the computer is in use.

Two hourly rates apply, on a sliding scale; one for the 51-100 hour bracket, the other for all hours over 100.

The standard purchase and lease agreements will continue to be available. And the free programming service to all LGP-30 customers, will continue to be provided.

The plan originated with Frank Delery, district sales manager for Commercial Computer Sales in Houston, Tex.

Local Scout Post Seeks New Members

(GLENDALE) National Boy Scout Week, Feb 7-14, is getting extra observance from the Explorer Scout post sponsored by the Glendale branch. In addition to Verdugo Council events, the post will launch its first collective project, the building of a "ham" radio transmitter and receiver.

The Post meets on the second and fourth Wednesday evenings of each month on the second floor of Bldg A-19.

Post sponsors urge all Librascope and CC division dads with 14-17 year old sons interested in electronics to join the Glendale and Burbank youth membership. Information about joining may be obtained from A. R. Pederson, x1226, Bruce Larson, x1204 or Warren Emery, x2047.

Please Mail It Back

If you haven't as yet returned the Credit Union statement you received in the mail recently, please do so as soon as possible.

The form, which showed the amount of your shares and loans as of Dec 31, is part of the annual audit conducted by the Department of Corporations for the State of California. The verification requires 100% participation of all CU members, according to Howard Hill, chairman of the CU Supervisory Committee.

If the figures on the form agree with those on your end-of-the-year CU statement, then sign it and return it in the stamped, self-addressed envelope enclosed for that purpose.



BOARD OF DIRECTORS
(l-r) Fossler, Eberle, Girouard, Newman, Picker, Nelson, Crowell



CREDIT COMMITTEE
(l-r) Rosdorff, Jackman, Sagar, Derrington

Credit Union Members Elect New Officers, Committee Chairmen At Annual Meeting

(GLENDALE) New members of the board of directors and the supervisory and credit committees, were elected by shareholders of the Credit Union at the organization's 9th annual meeting Jan 30.

Named to the Board of Directors were W. F. Girouard, Librascope division Director of Industrial Engineering (3-year term); W. F. Picker, Manager-Product Assurance, Librascope and Commercial

Board members elected Newman, Nelson and Mrs. Eberle to the posts they had held, at the first board meeting following the annual CU membership meeting.

Crowell, Derrington and Newman were appointed Chairmen of, respectively, the educational, membership and legislative committees.

The Board appointed CU office staffers Edith Adkins as Loan Officer and Dorothea Speed as Assistant Treasurer.

Members of the Credit Committee elected Marie T. Sagar as Chairman and the Supervisory Committee members are expected to rename H. H. Hill as their Chairman.

Computer divisions (1-year term) and R. D. Fossler, senior technical writer, Glendale quality control (3-year term).

Fossler had been serving as appointed successor to a director who had resigned from the company.

Girouard and Picker succeed Jess Pack and George Yerkes, both of Glendale Publications. The new board now consists of E. D. "Buzz" Newman, Supvr Cost Analysis, Glendale Management planning and control; D. F. Crowell, Glendale Industrial Engineering engineer; Dorris M. Eberle, secretary-treasurer; R. H. Nelson, property accountant, Data Processing Systems branch; Fossler, Girouard and Picker.

Paul H. Kee, Supvr accounts payable, Components & Special Devices branch, was elected to the Supervisory Committee, succeeding C. J. Baumgard. Holdover members are H. H. Hill, Director, Sunnyside production engineering, and A. F. Haber, designer, Data Processing Systems branch.

Elected to membership on the Credit Committee was Jan T. Rosdorff, designer, Data Processing Systems branch, succeeding Fossler and Don Derrington, Assistant to the Manager, Glendale quality control. Holdover members of the committee are:

S. E. Jackman, leadman, experimental wiring, Glendale assembly; Edward Grossman, production estimator, Glendale manufacturing and Marie T. Sagar, group leader, Glendale parts cost accounting.

Too Much Money; CU Earnings Sag

Our Credit Union dividend rate declined from 5½% to 4½% in 1962, according to the annual statement distributed Jan 30 at the 9th annual meeting of the organization.

An increase in operating expenses, a wholly unexpected increase in deposits and a percentage decline in borrowing combined to force the dividend rate down, CU President E. D. ("Buzz") Newman told LIBRAZETTE. The board will be taking corrective action in these areas in 1963, he declared.

"We were hit hard by a totally unexpected influx of deposits in the latter part of the year—cash deposits, not payroll deductions. We could not lend this money fast enough to earn a profit—but we did have to pay a dividend on it because the money was on deposit."

"We already have taken corrective action to prevent a recurrence of this, by limiting total individual deposits in any one month to \$500," Newman declared.

"We also have, in the planning stage, an educational campaign to acquaint more shareholders with the fact that it is cheaper to borrow money from their Credit Union, than from other lending institutions. And we will point out that a car, a TV, a new refrigerator, or new furniture can be bought more cheaply with money borrowed from the Credit Union, than by using the dealers' and stores' 'time payment plans,'" Newman said.

"Operational expense is something we will continue to watch carefully and nothing that cannot be justified will be approved."

Ready New Home For Credit Union

(GLENDALE) The Employee Credit Union, heretofore quartered in Bldg I-03, is scheduled to move to a new home by mid-February in Bldg I-58.

Located just outside the rear entrance to Bldg I-03, the new location should prove more convenient to all shareholders, says CU President E. D. Newman.

"The Company is installing a gate in the chain link fence and a new doorway in the building, to permit shareholder visits without having to clear with the Guardhouse.

"This will be of special benefit to family shareholders, who previously had to obtain visitors' passes to enter Bldg I-03 and visit the CU office."

A possible expansion in hours of operation is under study by the CU board of directors, Newman added.

Bldg I-58 has had varied uses in its short history. Originally built as a test facility for the R-A-T project, it later was a warehouse, storage area and stationery stores building.

\$\$\$ the Incentive With Writing Award Program

(GLENDALE) The Employee Writing Incentive Plan, the company-sponsored program carrying substantial financial assistance to employees whose papers or articles are accepted for outside publication or presentation, continues to award prize money to successful company authors. Recent winners include:

Dr. J. G. Carlson, Mgr—Glendale Management & Control Planning, whose article, "Production Standards for Small Lot Manufacturing," appeared in the *Journal of Industrial Engineering*;

J. R. Pelamati, Mgr—Glendale Technical Documentation, the author of "MIL-D-70327 + X = GO", which was the feature article in the Aug '62 issue of *Graphic Science*;

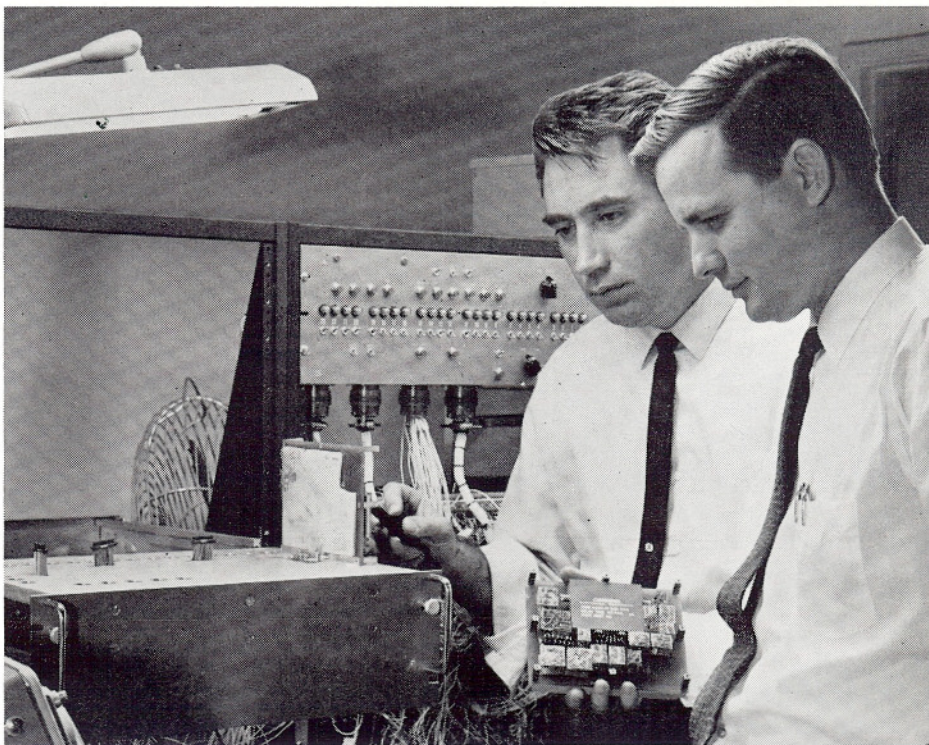
C. W. Diem, San Marcos Sr Eng, who presented a technical paper on a digital camera control system at the 6th annual MIL-E-CON meeting in Washington, DC;

J. L. Saiers, Glendale Eng Supvr, whose article, "Optimum Cooling by Use of Finned Dissipators" will be featured in an upcoming issue of *Electronic Packaging and Production*.

Several employees are on tap for awards now being processed, according to J. O. Robinson, program administrator. The future winners include Glendale engineers R. T. Shone, P. M. Salomon, and J. T. Ator, Reliability Sr. Eng Herbert Jacks, and a second writing award to Dr. J. G. Carlson.

For further information on the Writing Incentive Program and possible markets for your technical papers, contact program administrator Robinson, Glendale, ext 1456.

"The greatest problem of communication is . . . the illusion that it has been achieved."—Anon



CHECKOUT—L-90 Circuit Group leader Dick Elias (left) performs checkouts on the engineering prototype of the permanent and temporary memory unit of the computer being developed at San Marcos Branch. Assisting is John Pross, a member of the Logic Group on the L-90 project.

Ladies Take to Links

(GLENDALE) Twenty-two distaffers have signed up to participate in the women's division of the Precisioneer Golf Club, says Jim Hachtel, chairman of the group.

Brand new golfers—nine of them—are included in the group and Hachtel has taken on the job of giving instruction. He also will observe practice rounds and set the players' handicaps.

Women interested in playing this high-class field hockey game, should contact Hachtel at x1361. Entry fee is \$5.



UP THE LADDER

Cliff Moore, who joined the company six years ago as an engineer, has been appointed Director, Mechanical Support section of the Data Processing Systems branch, by Chief Engineer L. L. Wolman.



Moore will be responsible for all mechanical design, drafting, drawing releases, production engineering and coordination and liaison with the Manufacturing department, with the exception of rotating memory functions.

English-born Moore is a native of Coventry and is a graduate of Coventry's Technical College.

Other recent promotions include:

Peter D. Laue, Glendale Management Engineering section, from industrial engineer to senior industrial engineer.

★ ★ ★ ★

John O. Breninger, production engineer, San Marcos, to senior production engineer.

★ ★ ★ ★

Donald E. Torrence, spare coordinator, Glendale Spares Analysis, to spares analyst.

For the Travel Minded

If you are lured to far away places with strange sounding names, then Eileen Brown, Precisioneer store manager, may have just the thing for you—and at a reasonable price.

Eileen is presently making plans for the annual Precisioneer-sponsored vacation tour, with a tentative list of destinations indicated below. If you have any interest in making one of the trips, she would like to hear from you via this questionnaire.

There is no obligation involved; it is merely an indication of employee preference.

Please check one of the following:

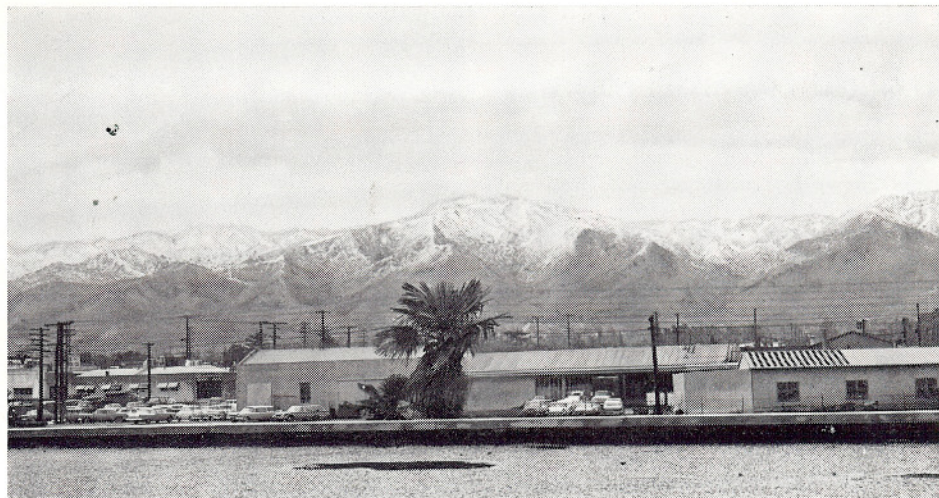
- ☐ Hawaii (2 weeks)
- ☐ Spain (3 weeks)
- ☐ Scandinavian countries (3 weeks)

There would be people in my party should I decided to join this year's tour.

Name

Branch

Extension



NEWSWORTHY WEATHER—Prior to the early February warm spell, there were some rather frigid mornings, as witnessed by the icicles ringing Dan Cupid's pond in front of Bldg A-07 (top left). But that's balmy weather compared to the

scene of a year ago. In photo at right, taken from the rooftop of Bldg I-03, the neighboring mountain range presented an unusual sight to snowless Southern Californians.

Cawthra Heads '63 Precisioneers

(GLENDALE) With better than 900 ballots cast at the Jan 25 Precisioneer election, Bill Cawthra, Glen-Eng, was voted in as president for 1963.

Cawthra, last year's Precisioneer vice president, garnered 271 votes. He was followed in the balloting by Jack Naimoli, 249, Jim Manley, 210, and Frank Marshall, 138.

For the remainder of Precisioneer offices, Ken Cantrell (Glen-Eng) was elected vice president, Irene Hummer (Glen-Eng) elected secretary, and Fred

Killips (Mtl-Cont) reelected director-at-large.

Precisioneer building representatives for the new year include: Bldg 1—Clem Abbot and Shirley Lawyer; Bldg 2—Barbara Christine; Bldg 3—Phyllis Miller and Ron Curry; Bldg 5—Dorothy Janesz; Bldg 7—Ernie Tamminga; Bldg 14—Lee Norvell; Bldg 15—Ed Reed; Bldg 16—Kay Person and Jerry Gaughen; Bldg 17—Edna Smith and Kay Small; and Bldgs 18 and 19—Bob Gonzalez. George Poppa, Bldg 1, was again reelected night shift representative.

An installation dinner for the new officers was held Jan 30 at the Five Horsemen Inn in Burbank.

Mary Barnes

(Continued from Page 6)

by those who had been her supervisors. Such as:

"Mary knows her job thoroughly, performs it well above average and passes her know-how on to others."

"Mary consistently meets and betters the standards for her job."

"Mary was an important factor in getting the job on schedule and keeping it there. She is a good leader."

THE FACT that Mary studied the needs of her jobs and augmented her work skills with knowledge acquired at Glendale College, did her no harm with the selection board, either.

Mary first joined the company in 1943, left to move to Seattle, returned in 1950 and has been here ever since.

Over that 12-year span, Mary has held three different final assembler classifications, and was an optical technician and a leadman in both areas before being appointed Foreman, Assembly, in 1960.

MEMBERS OF the selection board were: Harlan Buseuth, assistant branch manager, Herb Darby, assembly superintendent, C. E. Talbot, employment supervisor, W. P. Strong, training director and B. A. Peskin, Manufacturing Manager.

Golfers Elect Officers, Make Plans for Season

A new slate of officers were elected this month to guide the Precisioneers Golf Club through its 1963 season.

Bill Shaneyfelt, Glendale Purchasing, was elected president for the new term, succeeding Joe Zajac, Glen Prod-Cont.

Other elected officers include: vice president—Andy Lee, Glen Estimating; secretary—Erma Brown, Data Processing Systems Purchasing; treasurer—Stan Williams, Glen Eng.

Also elected were committeemen Charley Guran, Glen Eng, and Sam St. Clair, Glen Mfg. Guran, who will handle tournament arrangements, was named to a three-year term and St. Clair, new membership chairman, will fill the two-year vacancy. The third committeeman—Bob Rudolph of Glen Purchasing—will handle the stormy issue of handicapping for the coming year.

First event on the golf calendar is a kickoff tournament to be held in early April, according to Shaneyfelt.

Librazette Changes, Too

Like the organization of which it is a part, LIBRAZETTE is undergoing a change. This issue shifts from the previous news-magazine format, to newspaper format, using the same size—8½x11 inches—page.

This is an experiment in a continuing effort to find better ways in which to present the news of the branches and divisions that make up the Information Systems Group.

Future issues also will be experimental. Somewhere along the line we'll find the way that serves our needs best—and that will be your LIBRAZETTE. It's possible, of course, that we may have a new name, too, one that reflects the new name of our parent group.

Ideas, anyone?

Ewing - Shaul

Survivor's benefits totaling \$35,000 were paid recently under the company's basic and supplemental life insurance program, to the widows of two veteran employees.

The Aetna Life Insurance company, GPI's carrier, paid \$25,000 to Mrs. Burns C. Ewing and \$10,000 to Mrs. Paul N. Shaul.

Ewing, a senior engineer with the San Marcos branch, died Dec 30. He had served the company since April 9, 1951.

Shaul, a parts marker in the Glendale branch machine shop, died Nov 3 in his Altadena home, following a lingering illness. He was the father of Douglas Shaul, a member of the ISG central mailroom staff, and had been with the company since March 17, 1958.

"A society threatened by conformity needs the tonic of dissent."

Arthur Calder-Marshall