



LIBRAZETTE

AN EXCHANGE OF NEWS AND KNOWLEDGE

VOL. 10, NO. 5

MAY-JUNE, 1963

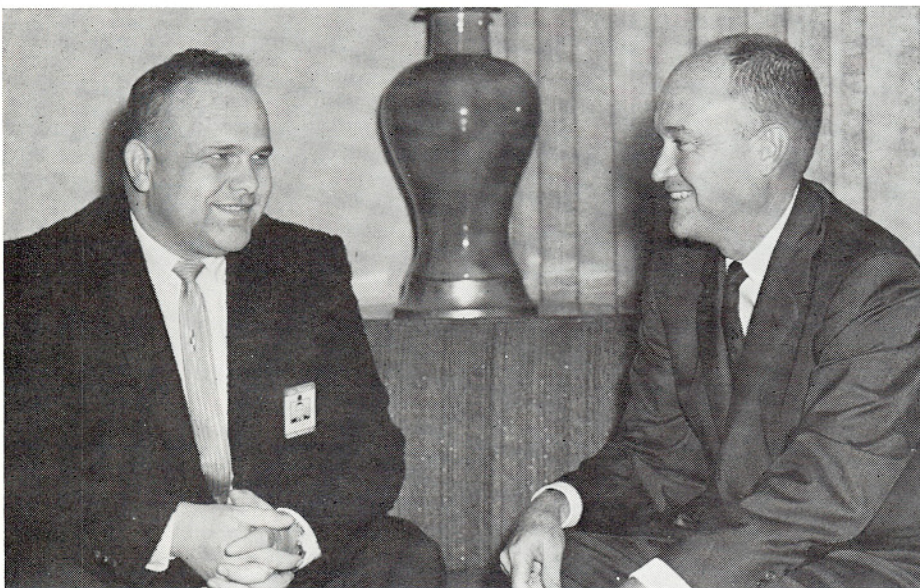
Occupy New Building At San Marcos Branch

(SAN MARCOS) San Marcos' new 28,500 square foot building is now complete—except for its "clean room"—bringing the total work area under one roof to 52,500 square feet. Building inspection tests by San Diego County found all construction and safety requirements have been met or exceeded.

ORIGINALLY designed as a separate structure, the new building, designated D-34, was joined during construction to the pioneer structure—D-29—and the result is now really one building.

HOUSED in the newest portion are the test laboratories, mechanical and electrical wiring assembly, quality control, production management and methods sections, material control, Purchasing, Personnel, the stock rooms and Shipping and Receiving.

Still in use, however, are the "farm house," the dwelling of the property's original owners and one trailer. NASA and CENTAUR training schools occupy the pair.



ONE OF THREE employees to qualify for participation in the company's Advanced Degree and Advanced Degree Fellowship Programs is C. Walter Johnson, shown here discussing his projected study at UCLA with ISG President W. E. Bratton. Johnson is a Senior systems design engineer in Glendale's Command and Control Systems Dept.

Navy Awards Glendale \$23,200,000 In Follow-On ASW Production Contracts

(GLENDALE) The Navy's Bureau of Weapons has awarded follow-on production contracts totaling \$23,200,000 for fire control systems to the Glendale branch and is negotiating another contract which will up the backlog by approximately \$3,500,000 more.

Delivery dates are spread over a considerable span and will carry production well into 1965.

Largest contract is for production of the Mk 113, Mod 2 Fire Control System, for a total of approximately \$14,000,000 when the letter of intent is definitized.

A production contract for Mk 114 fire control systems adds another \$3,500,000.

A letter contract for Mk 143 fire control systems, part of the FRAM program, will add \$2,200,000 when negotiations are completed.

Also under negotiation is a contract for work to expand capacity of the Air Force 473L data processing system being built by the Command and Control System department of Glendale. This contract is expected to be finalized at approximately \$3,500,000.

Lee CCD Pres; Vallarino is G/M

(GLENDALE) R. W. Lee, Executive Vice-Pres and General Manager of the Information and Systems Group, has assumed additional duties as President of the Commercial Computer Division. He succeeds R. E. Hastings, resigned.

A. R. Vallarino, Manager of Librascope Division's Sunnyvale Branch, has been appointed General Manager of CCD. He will maintain offices at Burbank and Sunnyvale, dividing his time, as required, between the two facilities.

R. L. Raschen, in addition to his other duties, has been appointed Assistant Manager of the Sunnyvale Branch.

At Burbank, Vallarino announced the following staff and operations appointments for CCD:

Industrial Relations Manager—Maurice Kimmel; Chief Engineer, Components Engineering Dept.—L. W. Hill; Manager, Product Assurance—Clayton E. Kuehn; Production Manager—J. P. Kontra; Chief Engineer, Computer Engineering—R. L. McIntyre; Manager Component Sales—J. D. Hannam.

Division Controller L. R. Foley and G. C. Ensslin, Vice-Pres Commercial Computer Sales, will report to President Lee.

Management Meetings

Management dinner meetings for CCD, Glendale and San Marcos branches and ISG Offices personnel are to be held July 1 and 2. San Marcos employees will meet July 1 at Marty's Valley Inn in Ocean-side; the July 2 meeting will be held at the Castaway restaurant in Burbank. ISG Pres W. E. Bratton, Executive Vice-Pres and Gen-Mgr R. W. Lee, and Librascope Division President D. C. Webster, will report on the first six months' business and discuss future operations. Both sessions are to start at 5:00 PM.

Junior Achievers Wind Up Year On Debit & Credit Sides of Ledger

(GLENDALE) The two ISG-sponsored Junior Achievement companies have wound up their planned year of existence and their short histories present a potent example of the chance-taking nature of modern business.

ONE COMPANY—Qualicraft—manufacturers of a combination barbecue salt-and-pepper shaker, ended the year by paying a 10% return on investment to the shareholders who financed the operation.

THE SECOND COMPANY—Stardex—whose product was a kitchen note-making device—ended its existence with a 17½% loss to investors.

The teen-aged groups were in complete agreement that their experiences opened their eyes about our free enterprise system and provided a useful addition to their knowledge of economics.

NOTHING succeeds like success, the Qualicrafters also discovered. Their company was chosen Company-of-the-Month in JA's northwest division for the month of March; Myra Schreiber, their treasurer, was chosen Treasurer-of-the-Year for the NW district.

Miss Schreiber and Sue Kelso, Qualicraft's Vice Pres-Sales, each won a \$200 JA scholarship and Miss Kelso also was tapped for the district Junior Executive award.

THE annual report of Qualicraft's President, Bruce Baron, is a cogent example of some of the requirements for successful business operation. Said Baron:

"A unique, good quality product is nice, but is useless unless it can be sold as a profit.

"Success in business requires capital, planning, cooperation, and plenty of hard work.

"Record keeping and paper work is very important to a company."

STARDEX' two top executives—President Marilyn Leiker and Treasurer Lynn Walker—learned the same lessons that the Qualicrafters did, but by a reverse process. Time lost in deciding on a product and then discovering that the product was unsuitable, cost Stardex six weeks of unrecoverable lead-time. The switch to a new, worth-while product, which had serious production difficulties, made it impossible for Stardex to get into the black.

Both agree that, on the basis of what they learned by unhappy experience, that they will do things much differently "the next time around."

Company advisors who gave freely of their own time and effort to the two JA companies were:

Qualicraft—Dan Bowden, C. L. "Bud" Linsley; Wayne Strong; Dallas Martin and Les Hey.

Stardex—Bob Laperle; Glen Seltzer; Bill Dill; Joe Freiberg and Dave Sweeney.

Name V. H. Herald Security Manager

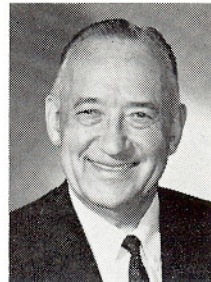
(GLENDALE) Virgil H. Herald, formerly Security Manager of GPI's Aerospace Group at Little Falls, N.J., has been appointed Security Manager for the Information Systems Group and the Librascope Division.

He succeeds W. D. Knox, who has assumed the duties of Assistant Security Manager.

Formerly an Industrial Security Specialist with the Inspector General's Office of the Air Force, Herald is a retired Army Lieutenant-Colonel. He joined the Army in 1933, spent most of his service in intelligence units and the Counter Intelligence Corps. He also served on the faculty of the Army's Military Police school at Camp Custer, Mich. He saw overseas service in the Orient in both World War II and the Korean War.

Herald has established residence in Hollywood and is "looking forward to living in a city, for the first time. In 24 years with the Army and six years as a civilian I have always lived on a military post or out in the country. This is going to be a real experience for me and my family!"

The new security manager has his office in Bldg A-15. He reports to D. C. Webster, President of the Librascope Division.



Herald

Blood Bank Roll of Honor

Allen, Lena S.
Anderson, Robert M.
Arredondo, Isabel N.
Atcherson, Anne M.
Atteberry, Logan W.
Barton, Doniphan K.
Battistessa, Bernard V.
Baumgard, Charles J.
Benham, Joan P.
Benner, Daniel C.
Bietsch, William G.
Blevins, David J.
Brinkley, Stephen H.
Buck, Sigurd L.
Buseth, Harlan
Cantrell, Kenneth K.
Carey, Frank R.
Cervenka, Dorothy R.
Conway, David E.
Copeland, Howard L.
De La Cruz, Victoria C.
Delle-Fave, Ralph B.
Dodson, Harold E.
Doolittle, Carl J.
Duncan, Anne P.
Durand, Alvin
Epperson, Caroline E.
Felker, Robert E.
Fraun, Carl V.
Gammel, Marvin R.
Gioia, Tullio J.
Guidry, Raymond J.
Hall, Barbara J.
Heinz, E. Millicent
Heinz, Leo J.

Hembrough, Douglas
Heminger, Edwin D.
Henshaw, Gerald R.
Henze, Fred W.
Hoehn, Vera E.
Holcombe, Barbara J.
Horton, Freddie Leon
Janesz, Dorothy R.
Jensen, John R.
Johnson, Dennis R.
Johnston, John W.
Kaneyoshi, Richard Y.
Kelly, Donald F.
Killips, Frederick J.
Lears, Olga Sandra
Leonetti, Perry A.
Liberty, Esmund L.
Linsley, Clarence R.
Loisel, Marcell A.
Loretz, Ralph E.
Lovejoy, Robert H.
McDonald, Ray R.
McKeague, Chas. P.
March, Charles W.
Marshall, Frank B.
Martin, James G. Jr.
Medenbach, Harry W.
Meggie, Robert L.
Meyer, Herbert
Miller, Carl A.
Miller, Eugene J.
Miller, Howard A.
Morin, Armand C.
Mothershed, Kenneth C.
Newman, William E.
Novielli, Carl W.

Nyholm, Maria C.
O'Donnell, Neil A.
Perez, Helen
Peskin, B. A.
Reyes, Joseph R.
Ritchie, Jennie M.
Robinson, Richard L.
Robinson, Wallace H.
Robinson, Whit F.
Roche, Frank C.
Roth, Seymour
Rehill, Cora J.
Ryan, Robert B.
Ryan, William S.
St. Clair, Roger J.
Sanchez, Ray
Schneider, Anton U.
Seyler, Michael H.
Siemers, George R.
Smith, Patricia J.
Stauber, Vicki L.
Strawn, Myron C.
Swope, Patricia J.
Terrill, Margaret Louise
Terrill, Stanley C.
Tisdale, Norman R.
Tommaselli, Marian A.
Valdez, Earl
Van Essen, Arthur
Walsh, James W.
West, Catherine A.
Williams, Derwin L.
Winik, Laurence J.
Yapp, Frank H.
Young, Robert M.

Buterbaugh Transfers To Glen Marketing Post

(GLENDALE) Charles C. Buterbaugh, Staff Engineer in Glendale's Engineering Dept, has been named Marketing Mgr-Shipboard Weapons Systems. He reports to John A. Lockheed, Marketing Mgr-Shipboard and Surface Weapons Systems.

A veteran of the Navy's Bureau of Ordnance, where he was a technical director in the development of ASW and missile weapons systems, Buterbaugh joined the company four years ago as a Senior Engineer. He was a member of the design and development team on the SUBROC program.

A native of Washington, D. C., Buterbaugh studied mechanical and electrical engineering at George Washington University, served three years in the World War II Navy. He joined the Bureau of Ordnance after demobilization.



Buterbaugh

Four Employees Win Masters' Degrees Under Educational Assistance Program

(GLENDALE) Four of the 150 members of the ISG organization who are receiving company aid in expanding their vocational and professional education reaped the rewards this June of their long after-hours work when they join the ranks of other company scholars holding Master's degrees.

James R. Drugan, Sen-Eng, Glendale Reliability section, received his MS/Eng from UCLA. David R. Finley, Engineer in Glendale's Systems Engineering section got his MS/EE from USC. Dwight E. Roof, Manager of Glendale's Electro-Optical-Mechanical section, received his MS/ME degree from USC. Walter J. Picker, ISG Director of Product Assurance, was awarded his MBA degree by USC.

Glendale Branch, the ISG offices and the ISG Research and Systems Center, have 87 enrollees in the Educational Assistance Program; CCD has 47, San Marcos 10 and Sunnyvale six.

Educational objectives of those in the program range from earning specialty certificates, to the several who have their eyes fixed on the distant goal of the PhD.

USC and UCLA head the list of colleges and universities chosen by the students. Other schools with ISG students:

Pierce College, Loyola University Law School, Los Angeles State, Southwestern University, Santa Clara University, Valley Institute of Technology, San Jose State, West Coast University, San Fernando State, San Diego State and Mt. Palomar College.

Paul Rothfeld Manages Glendale Prod-Control

(GLENDALE) Paul Rothfeld, veteran of 12 years in production and material control, assembly scheduling and industrial engineering, has been appointed Production Control Manager by B. A. Peskin, Manufacturing Manager of the Glendale branch.



Rothfeld

The new P/C Manager is a graduate in economics from Brooklyn College and holds an MBA degree from the Graduate School of Business at Columbia University. Prior to joining Glendale, Rothfeld was Manager of Inventory Control at the Andover, Mass., plant of the Raytheon Corp. He also served there as Ass't Prod-Control Mgr, Supvr of Assembly Scheduling and as Senior Project Industrial Engineer. Earlier he was a senior industrial engineer with Republic Aviation, at Farmingdale, N. Y.

Married and the father of two youngsters 11 and 7 years old, Rothfeld is a temporary bachelor until school is out back in Lawrence, Mass.

Dr. G. C. Murray Directs S/M Advanced Design Group

(SAN MARCOS) Direction of advanced computer design development, systems engineering and mathematical analysis in San Marcos' engineering has been delegated to Dr. G. Graham Murray,



Murray

newly appointed Director of Advanced Technology here. He reports to Dr. Alfred Schmitt, chief engineer.

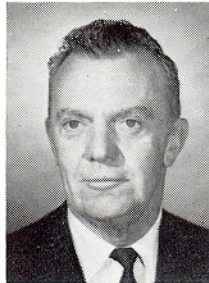
Dr. Murray, who joined San Marcos April 1, comes to the branch from RCA's Data Systems Division, Van Nuys, where he was manager of information processing. Before transferring to the West Coast he was manager of digital systems with RCA's Major Systems Division at Moorestown, N. J.

Dr. Murray holds B/S, M/S and PhD degrees in mathematics from Harvard University. For four years after earning his PhD degree he was a member of the senior staff of Johns Hopkins University's Applied Physics Laboratory.

Married and the father of three, Dr. Murray makes his home in La Jolla.

George M. Greene To Planning Post

(GLENDALE) The post of Director of Long Range Planning for the Information Systems Group of GPI has been assumed by George M. Greene. He reports to Senior Vice President R. M. Brunson.



Greene

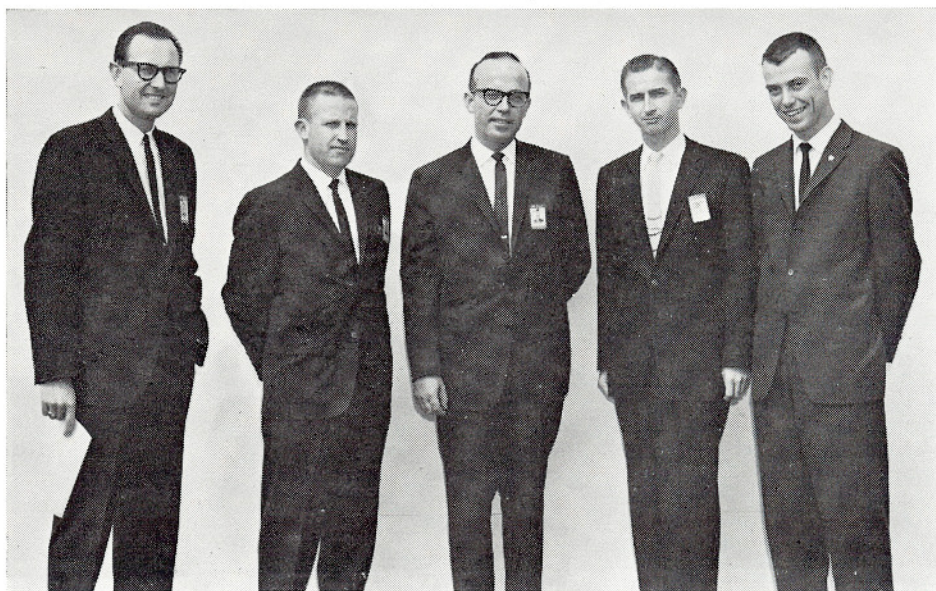
Greene formerly was with the System Development Corporation as consultant to management for planning and also spent eight years with Hughes Aircraft Company as Sales Manager and Assistant to the Vice President, Engineering. He is an associate fellow of IAS, senior member of IEEE and member of AAAS, holds a BS degree from the U. S. Naval Academy and an MS from Harvard in radio engineering.

Reliability Moves Labs

(GLENDALE) Expanded activity and the acquisition of new equipment has forced Glendale Reliability to shift a substantial portion of its testing activity from Bldg A-07 to new quarters in Bldg A-05 on South Flower street.

The new equipment includes one humidity chamber and four temperature chambers, according to Manager Herb Meyer.

Current plans are to continue the department's "heavy" testing work, involving shock and temperature extremes in Bldg A-07, Meyer said.



GLENDALE BRANCH V-P and Manager T. D. Bryant (c), proudly poses with four members of his organization who were awarded their Master's Degrees at USC and UCLA Commencement Day exercises. (l-r) Dwight Roof, MSME-USC; Walter Picker, MBA-USC; Bryant; David Finley, MSEE-USC, and Jim Drugan, MS/Eng-UCLA.

Aerojet-General Awards Contracts For \$116,000 to Sunnyvale Branch

(SUNNYVALE) A new \$116,000 contract for RI-138 Dual Squib Initiators, has been awarded to the Sunnyvale branch by Aerojet-General. They will be used in the TITAN II missile.

The new order is the third for the RI-138 received by Sunnyvale from Aero-Jet General.

COINCIDENT with the order, Sunnyvale was notified that the RI-138 has passed all "torture" tests conducted by the Air Force and is the only such device approved for use in the TITAN II.

The tests, in which the RI-138 was competing against other such devices made by competitors, was a 100% success for the RI-138. Ten production devices from each company were used; the RI-138 scored each time, while the nearest competitor had four failures.

The RI-138 is now undergoing evaluation tests to qualify for inclusion in the MINUTEMAN and TITAN I missile systems.

EDP Moves To New Glendale Quarters

(GLENDALE) The ISG electronic data processing center is scheduled to be in new and larger quarters in Bldg A-01 by July 1, according to R. M. Anderson, EDP director.

The group will move all its equipment and functions, except for card-punch and operations control, from Bldg I-03 into the administrative area of Bldg A-01.

Preceding the move—and the reason for it—is the expected arrival of new and greater capacity magnetic tape data processing equipment. This is expected to be installed and operating in the new quarters before the general move is made.

Medick New Addition To System Technology

(GLENDALE) Jack N. Medick, research mathematician, has joined the Systems Technology section of the Research and Systems Center as a Staff Engineer, reporting to T. W. Kampe, Systems Technology director.

Medick was a member of the technical staff of the Cornell Aeronautical Laboratory of Cornell University prior to joining ISG.

Now working on his PhD thesis for presentation to the dissertation committee at Illinois Institute of Technology, Medick holds a B/S-Aeronautical Engineering from Aeronautical University, Chicago, took graduate work at NYU, USC, and De Paul University, Chicago.

Prior to joining the Cornell Lab, Medick was a member of the electronics laboratory staff with Ryan Aeronautics, and the special projects group at North American Aviation. And, while on the Cornell Lab staff, he was appointed visiting professor of graduate math at Cornell University. He also lectured in math at Louisiana State University.



Medick

LGP-21 Is Selling Well

(BURBANK) Sales and leases of the LGP-21 low-priced digital computer produced by the Commercial Computer Division, are more than gratifying since its formal introduction at the IEEE Conference in March.

Currently, production of the new product is working against a three-month backlog and commitments for 55 machines are in hand, according to G. C. Ensslin Vice-Pres Computer Sales. A majority of the orders are for outright purchase of the \$16,500.00 computer.

New CCS Field Sales Structure

Commercial Computer Sales has shifted its field sales operation from company staffed offices to a franchised dealer structure, which divides the U.S. into 20 sales districts. The changeover promises to be a more effective operation, attractive to both the franchised dealers and CCD management. All major markets are now covered by the new arrangement and all newly-franchised dealers are former CCS employees.

Largest single area of use is by engineering firms, Ensslin told LIBRAZETTE, but a number of industrial organizations have acquired the LGP-21 to perform control functions as part of their already existing electronic data processing systems.

The 90-pound LGP-21 offers the memory capacity and capability of computers many times its size and cost, Ensslin said, and can use, with slight adjustment, the hundreds of programs developed by CCD for the LGP-30.

GPE Reports Gains

(TARRYTOWN, N.Y.) First quarter operations for 1963 showed sales of \$48.2 million and net income of \$889,000 for General Precision Equipment Corp., parent corporation of General Precision, Inc. After payment of preferred and preference stock dividends, this is equal to 48¢ per share of common stock on 1,643,101 shares outstanding.

GPE's report to stockholders stated that both sales and earnings were slightly higher than for the same period in 1962, when earnings were equal to 46¢ per common share.

The GPE backlog of \$206 million at the end of 1962, highest in the corporation's history, now stands at \$211 million. The report attributes the increase to new contracts resulting from expanded research and development.



TAKEJI SUGIYAMA, staff electronics engineer, Mitsubishi-Precision, Ltd., visits with Douglas Hembrough, Director, International Services, ISG Marketing. Sugiyama spent three weeks here becoming familiar with the new LGP-21 computer, which Mitsubishi-Precision will build under license in Japan for the Asian market.

Build Centaur In 'Clean Room'

(SAN MARCOS) A few microscopic bits of dust in the wrong place at the right time, can cause a malfunction in an otherwise rugged computer — and throw a missile or a plane off-course.

This knowledge, gained from various post mortem examinations of telemetry data, is why San Marcos branch is investing in a 3,500 square foot "clean room" for certain assembly operations.

THE "CLEAN ROOM" is being built within San Marcos' newest building—D-34 under the direction of Division Plant Engineer C. E. Dahl and Power Electrical Engineer Lloyd Loos.

When completed, by July 1—the clean-room will be one of the most modern facilities of its kind in the U.S. A completely self-contained air supply will maintain a constant temperature and will filter out dust particles as small as three microns.

AN "AIR LOCK" through which all technicians working in the room must pass when entering or departing, gives a complete "air bath" to the individual. Special foot mats will pick up all loose material on shoe soles.

Before entering the "airlock" each employee will wash hands and arms in a sterile setup resembling the "scrub" area of a hospital. Each technician also will further the aseptic atmosphere by wearing special gowns, caps and gloves.

WHEN COMPLETE, the clean room will meet all NASA and Air Force standards for controlled condition assembly operations, such as those demanded by the C-141 and CENTAUR programs.

The cleanroom was designed by Mfg Supt Art Davis, and a Division Plant Engineering group composed of Division Director of Industrial Engineering W. F. Girouard, Plant Engineer M. A. Loisel, Dahl and Loos.

ASN-24 (V) Earns Air Force Approval

(SAN MARCOS) The Air Force has tested and given final acceptance to a special version of the ASN-24 (V) airborne digital computer system for the 665A reconnaissance/strike program.

The 665A system is a modified version of the navigation computer system which San Marcos is building for the Air Force's C-141 jet-powered troop carrier-cargo plane.

The system includes the computer, a converter chassis, an auxiliary converter chassis and five control-display panels. Its functional capability exceeds that of the C-141 computer system.

Tom Zander is Project Manager and Shannon Long is Project Engineer on the 665A program.



NASA CERTIFICATION in soldering is won by group of Glendale Branch assemblers, after one-week course of instruction by Harold Compton (center), Assistant to Assembly Supt Les L. Hey. Certification was awarded by Mario Camomilli (far left), NASA Quality Control Representative.

Glendale Employees Win First Awards In Advanced Degree & Fellowship Plan

(GLENDALE) Two Glendale Branch engineers and a staff assistant in the Glendale Finance department are the first employees to qualify for participation in the Advanced Degree and Advanced Degree Fellowship Programs established last year.

Established to encourage employees to better equip themselves for their present assignments and to prepare for greater responsibilities, the programs provide tuition and other costs, plus limited paid time-off to attend necessary daytime classes.

Clyde E. LeFevre, Proj-Engineer in Electronic Circuit Design, is working on his Master's Degree in Engineering at UCLA. LeFevre joined the company late in 1961, is a BSEE from the University of Detroit.

Phillip L. Oster, a staff assistant in the Budget and Reports section of Glendale's Finance Dept, will attend USC and work for a Master's Degree in Qualitative Analysis. An employee since Aug '58, Oster completed work for his B/Sc degree in Industrial Management at USC as an after hours student.

C. Walter Johnson, a Senior engineer in the Advanced Systems section, Command and Control Systems Dept, will attend UCLA's engineering school and work for a Master's Degree in Electronic Engineering. Johnson joined the company in 1957, holds a BA/Math degree from Washington State, where he also took graduate work in Physics.

Lock and Key Control in the Librascope division Glendale locations has been transferred from Division Plant Engineering to ISG Security in Bldg A-15. Calls for service should now be made to Ext. 1487.

W. E. Strohmeyer Joins San Marcos Engineering

(SAN MARCOS) William E. Strohmeyer, formerly Director of General Dynamics-Astronautics' orbital space lab program, has been appointed Director of San Marcos' branch Space Information Systems section by Dr. Don Farr, branch manager.

Strohmeyer, an aeronautics graduate of MIT, will be responsible for all engineering effort in San Marcos' space information projects.

The new Director is a native of Chicago, and now makes his home in La Jolla. He is a veteran of the World War II Air Force, in which he served as a research and development engineer on various experimental supersonic aircraft projects.

While with GD-Astronautics, Strohmeyer also headed the Apollo and LEM Programs, and the SLAM and LARVA programs. Prior to joining GD he spent nine years with North American Aviation and Goodyear Aircraft as Chief of Aerodynamics and as West Coast Technical representative.



Strohmeyer

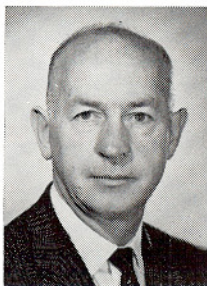


NEW FACES

(GLENDALE) Carl B. Coykendall has been appointed Supvr of Production Planning by Glendale Manufacturing-Mgr B. A. Peskin.

Coykendall previously was Prod-Control Supvr, then Supvr of Mfg-Methods with the A. O. Smith Corp., plant in Rochester, N.Y. He is a graduate in Industrial Management from Cornell University, took graduate work in economics at the University of Illinois.

Coykendall taught industrial management at the University of Rhode Island, following his graduate study and held various manufacturing management assignments with Rohr Aircraft, Riverside, and Cannon Electric Company, Los Angeles.



Coykendall



Wirtenen

Norman D. Wirtenen has joined the engineering staff of Glendale's Reliability section. Assigned to the test equipment lab, he reports to Supvr W. K. Emery. Wirtenen, a native of Gilbert, Minn., is a 1960 B/S grad of the Milwaukee School of Engineering. Before joining Glendale he spent three years as a designer of test equipment for North American Aviation.



NEWS BRIEFS

Link Division of GPI's Simulation and Control Group will build the APOLLO manned-space craft simulators in which NASA astronauts will be trained for the two week trips to the moon and back. Link was awarded the contract by the Space and Information Systems Division of North American Aviation. Probable dollar figure of the contract: \$9,500,000.

LIBRAZETTE is published for all employees of the Information Systems Group, GPI, to keep them informed about Group and GPI plans, policies, products and personnel. LIBRAZETTE is produced by the Communications section, Information Systems Group, at 808 Western Avenue, Glendale 1, Calif. © 1963 by Information Systems Group, General Precision, Inc.

Editor: W. K. Keith

Art and photographic services are provided by the Publications Section, Glendale Branch: Keith Kinnaird, Art Director; P. C. Kane, Supervisor, Art Services; Special Art, J. R. Norwood and J. W. Erickson; Photo Layout, A. M. Cook; Photography, E. H. Crawford and J. A. Avera.



TWISTING was the order of the evening May 11, when the Precisioners held their annual Spring Dance at the Hollywood Roosevelt hotel. The camera didn't catch them at it, but Precisioneer President Bill Cawthra and Dance Chairman Irene Hummer also demonstrated their skill in modern terpsichore.

Merge Research, Systems Centers

(GLENDALE) ISG's Research Center and its Advanced Systems Center have been merged into one group and the new organization will be known as the ISG Research and Systems Center.

J. R. Weiner, formerly Director of the Advanced Systems Center, has been named Director of the new R&S Center by R. W. Lee, ISG Executive Vice-Pres and Gen-Mgr. Dr. John M. Salzer is Associate Director.

The R&S Center consists of four departments: Advanced Research, H. J.

Hamilton, Director; Applied Research, W. E. Blackburn, Director; Systems Technology, T. W. Kampe, Director, and Naval Systems, Stephen Molivadas, Assistant Director.

Naval Systems is a newly established unit and Molivadas joined ISG only recently. Previously Molivadas was Manager of the Marine Systems Dept of Thompson-Ramo-Wooldridge.

Molivadas studied higher mathematics and physics at the Sorbonne in Paris, took an honors degree at University College, London. He is a native of Greece who fought in World War II with the Royal Hellenic Air Force and Britain's RAF.

Following the war Molivadas was a member of the scientific staff of General Electric of England, and Manager of that company's applied electronics laboratories in England and Australia. Subsequently he came to the United States as a member of the technical staff of Hughes Aircraft, left Hughes to join T-R-W.

Human beings have never changed—and they never will. They can blow up this planet or organize it in any way they like, but the real problems will remain what they have always been. You're handsome or you're ugly. You're bright or you're a fool. You've got some honor or you haven't.

Jean Anouilh

Glendale Engineers Visit Submarine

(GLENDALE) Engineers and designers of the Glendale Engineering mechanical-optical design and the electronic circuit packaging groups paid a familiarization visit to the Long Beach Naval Base June 7.

The groups were guests of Lieut-Comm John W. Klinefelter, commanding officer of the USS Blackfin (SS-322), a unit of Submarine Flotilla I, based at Pearl Harbor. The visitors saw at close hand some of the space problems which inhibit the size of their designs.

The group was led by Supvr Tom Miller. Those in the group included Engineers Cy Roth, Bud Linsley, Bernie Kopp, Hundley Kline, Dick Bates and Bob Chang, and Designers Carl Miller, Carl Doolittle, Bud Edwards, Anatoly Butyrin, Pete Iwakami and Don Mulkern.



UP THE LADDER

Ken P. Cohen, who joined the Glendale the then Glendale operations evaluation section a year ago, has been promoted to Assistant to the Manufacturing Manager. He succeeds Duane Smith, resigned.

Ken, formerly plant manager of the Plastimayd Corp., Portland, Ore., is a graduate industrial engineer from Washington University, St. Louis.

In his new post Cohen's prime responsibility is to coordinate all manufacturing section budgets and personnel forecasts.



Cohen



Hoffman

Robert J. Hoffman, who joined the company last October, is now Supvr of Reliability Analysis, Glendale Branch Reliability section. Reliability Manager Herbert Meyer was assisted in his promotional action by the Supervisory Selection committee.

★ ★ ★

Arthur J. Steiner, who signed on with the Glendale branch four years ago as a stockroom clerk, has been appointed Foreman in charge of packing, shipping and receiving. Art previously was a Group Leader in Glendale Mfg's production control section.

★ ★ ★

James A. Phillips, who hired in just over four years ago as a Final Assembler in Glendale Assembly, has been promoted from Leadman to Foreman-Final Assembly, by General Foreman Mary Barnes. Phillips, who studied applied electronics under the company's Educational Assistance Program, was selected by Foreman Barnes after interview by the Supervisor Selection Committee.

★ ★ ★

James H. Oldenburg, who joined Glendale branch last August as an Electronic and Mechanical Instrument Tech'n, has been promoted to Field Service Representative. Formerly a Leading Sonarman in the Navy, Oldenburg has been assigned to the Mk 113 program. Currently he is stationed at the Ingalls Shipbuilding Company yard at Pascagoula, Miss, working with representatives Bill Allison, Bill Kelly, Dave Sibley and Manuel Salvador, Jr.

See Page Eight

LIBRAZETTE's back page is occupied this month by a full-page advertisement for a new CCD product—the LGP-21 desk size computer. It is one of a series of advertisements presenting the products of the Librascope and Commercial Computer Divisions, and is scheduled to appear in trade, technical and professional publications throughout the country. The advertisements are the work of the Weekly and Valenti Advertising agency, of which K. J. Slee is the resident representative.

New Assignments For Low Hill, C. O. Kuehn

(BURBANK) Lewis W. Hill, a transplanted easterner, and Clayton O. Kuehn, who once called Oshkosh, Wis., home, are the new Chief Engineer and Production Manager, respectively, of CCD's Components and Special Devices department.

Hill holds a BSME from Lehigh University and an MSME from Rensselaer Polytechnic Institute. He formerly was a member of Nortronics Research Park facility, where he took part in computer and component development. Earlier he was Chief Engineer of Leach Corp's special products section and a staff engineer for IBM and RCA.

Kuehn (pronounced "Keen") is a BSEE from the University of Wisconsin. He also was a postgraduate student at Elmira College and Colgate University. Before joining CCD he was production control manager of Interstate Electronics, held other managerial positions with Litton Industries and Hughes Aircraft.



Kuehn



Hill

Carlson Is Speaker

Dr. John G. Carlson, Glendale Management Controls section, was the featured speaker at two recent industrial engineering and management systems conferences. At the American Institute of Industrial Engineers annual conference in Denver he delivered a paper on "Measuring Productivity," and at the Western Systems Conference he spoke on "Evaluating Management Control Systems."

Brush to Head San Marcos S&P

(SAN MARCOS) William P. Brush has been appointed Staff Specialist to Operations Manager Hugh Beatty, with responsibility for San Marcos' systems and procedures.

Brush comes to San Marcos from the Raytheon Corp's Santa Barbara operation, where he was Manager of Systems and Procedures and of Data Processing. Previously Brush was with Hughes Aircraft, and the Remler Corp, San Francisco.



Brush

Brush studied Industrial Management at the University of Miami and the University of Nevada. He is a member of the American Institute of Industrial Engineers and the Data Processing Management Ass'n.

Appoint Hobberstad To S/M Marketing

(SAN MARCOS) Kendall E. Hobberstad, a design and research engineer of long military experience, has joined the marketing staff of the San Marcos branch.

Marketing Manager J. W. Browder has assigned Hobberstad to the space electronics and avionics section.

Hobberstad studied at El Camino College, and also at UCLA, where he took special studies in jet and rocket propulsion, as well as basic and advanced electronics.

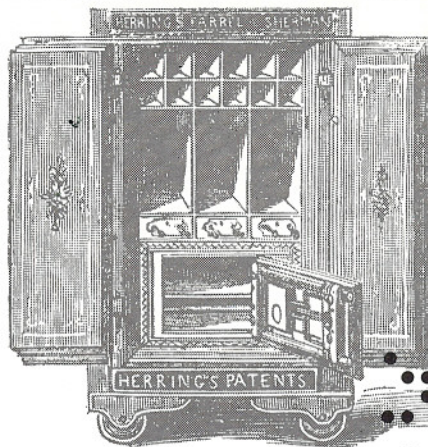
Prior to joining San Marcos, Hobberstad was a design engineer on the Saturn project with Douglas Aircraft; a member of the technical staff at STL, working on ground support equipment designs for satellite programs; a design engineer evaluating designs for space vehicle control systems with Douglas and a designer of control systems for fighter aircraft with North American Aviation.

Dr. Salzer To Chair JACCP Sessions

(GLENDALE) Dr. John M. Salzer, Associate Director of the ISG Research and Systems Center, will take part in the 1963 Joint Automatic Control Conference, to be held June 19-21, at the University of Minnesota at Minneapolis.

Dr. Salzer will be vice chairman of the discussion group on Optimum Control Theory, part of the conference's mechanical engineering program.





FIRST FULL-CAPABILITY COMPUTER PRICED FROM \$16,250

The General Precision LGP 21 Now you can increase the productivity of your scientific or engineering staff with an LGP*21, first full-capability, general-purpose digital computer to sell for a basic price of \$16,250. (Add \$5250 for special input/output typewriter.) Or lease the LGP 21 under a variety of plans to fit your needs. Use of 500-program library included. Large disc memory: 4096 words of 9 decimal digits each (36,000+ decimal digits). Compact vocabulary: 23 commands covering all arithmetic functions. Adaptable: 32 addresses for program control of input and output equipment. Easy to operate. Completely mobile. Send for full details!

COMMERCIAL COMPUTER DIVISION

**GENERAL
PRECISION**

INFORMATION SYSTEMS GROUP
101 W. Alameda Ave., Burbank, Calif.

