

# Librazette

CHRISTMAS / 68



*And the Word  
was made flesh,  
and dwelt among us....  
John 1:14*



# Librazette

Vol. 14, No. 4 Christmas /68



## COVER

*Colorfully depicting the Christmas season is this holiday cover by photographer Joe Maddocks. The subject is an original cloth-mache sculpture by the wife of a Librascope employee. (See story at right)*

## In this issue

- 2 --- The Spirit of Christmas
- 4 --- Time for Holiday FUN!
- 8 --- United Crusade Results
- 9 --- Social Security Taxes Rise
- 12 --- Singer-General Precision Notes
- 14 --- Six Long Weekends in '69
- 15 --- Safety Council Urges Caution
- 16 --- Libravets
- 18 --- Precisioneers Plan Election



Earl Erickson, Editor

Jim Norwood, Art Director

Member: International Council of Industrial Editors,  
Southern California Industrial Editors Association.

The Librazette is published bi-monthly for employees of Librascope Group, Singer-General Precision, Inc., by the Public Relations Department, Earl W. Erickson, director. Editorial offices are located at 808 Western Avenue, Glendale, California 91201. ©1968, Singer-General Precision, Inc.

## The Spirit of Christmas

The story of the Nativity is set down in a few short chapters in the New Testament. It has been lovingly told and retold down through the ages, and it is told again in the exquisite work of sculpture, "Madonna and Child," pictured on the cover of this month's Librazette.

Very much as it must have been that night long ago, the story is once again wonderful and mysterious.

Wonderful because it brings to mind Mary and Joseph's journey into Bethlehem, a Babe lying in a manger because there was no room at the Inn, and the miraculous happenings which revealed the divinity of the Christ Child.

Mysterious because the storyteller, artist and sculptor Mrs. Judd C. (Dory) Kramer, shows a love and understanding of both her work and the subject matter. Yet, this talented lady who has created such an inspired artistic tribute to the birth of Christianity does not even share that faith. She is Jewish.

(Continued on Page 13)

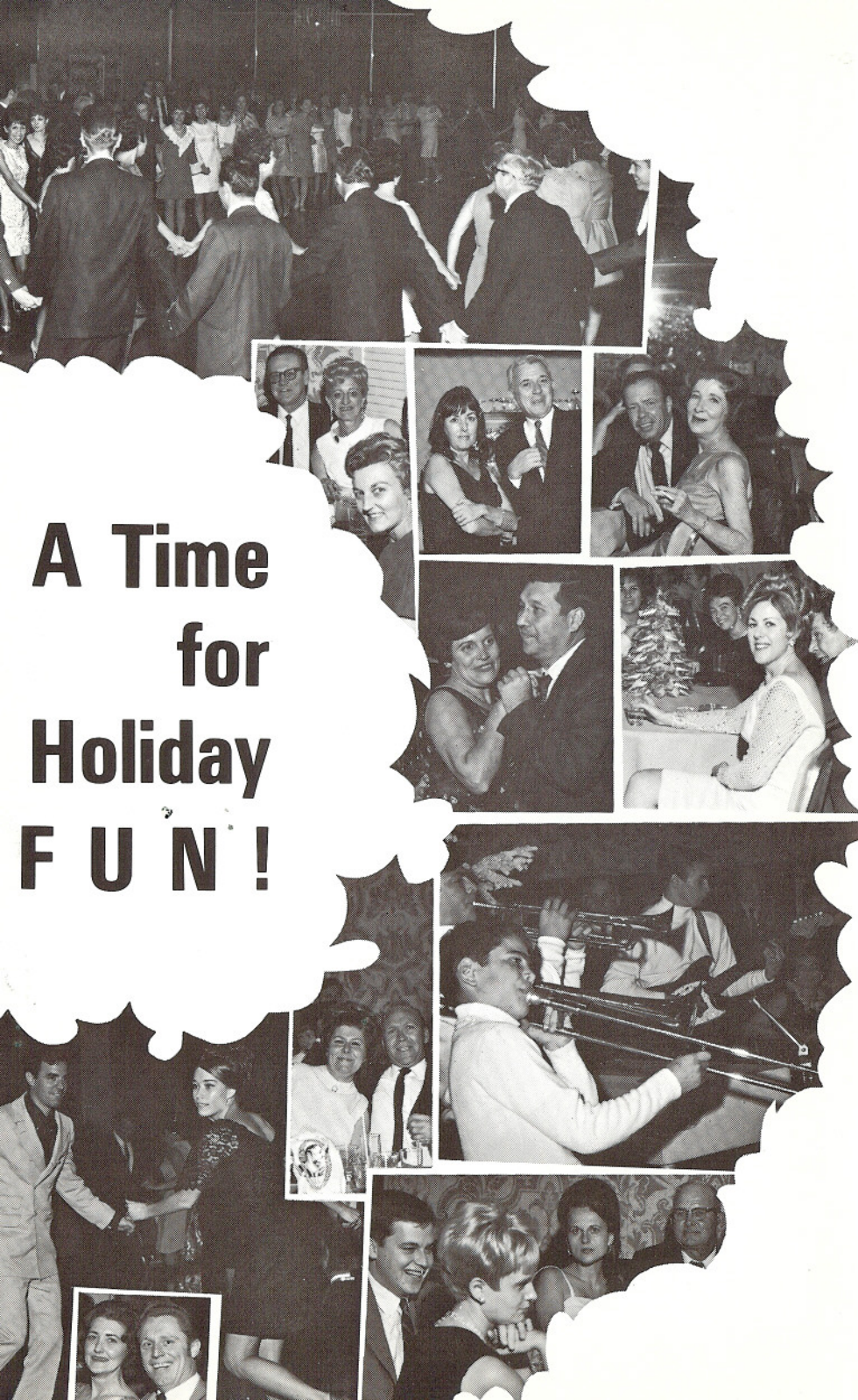


*An obviously proud Judd Kramer poses with his wife, Dory, and some of the sculptured religious figures she has created. Judd is manager of marketing plans and analysis for the Systems Division.*

*Photo by Jim Averá.*



# A Time for Holiday FUN!



It was a story book kind of night, crystal clear with a nip of California winter in the air. And, folks who wonder if Librascope people had a good time at the 1968 Christmas Dinner-Dance, have only to look at the pictures on these pages to see that the answer is a resounding "Yes!"

Some 475 employees and guests — a near sellout crowd — turned out for the Precisioneers-sponsored affair at the Castaway Restaurant in the foothills overlooking Burbank.

They dined sumptuously on their choice of steak or lobster tail, then danced and socialized in the Castaway's beautiful Starlight Ballroom until 1 a.m.

(Continued)







## Good Food, Music, Prizes and Surprises

"We had a full evening...with the good food, dancing and door prizes, as we promised...and a few fun surprises thrown in for good measure," said Jeri Tichenor, chairman for the Precisioneers.

Music was provided by the Herb Silvers Orchestra and the Silvers group kept the dancing alive and kicking with many novelty numbers. During intermissions, the crowd was entertained by The Reflectors, the young musicians who made such a big hit at last year's dance.



*Above right: Jeri Tichenor,  
Chairman of the Precisioneers  
Christmas Dinner-Dance.*



Among the surprises were free bottles of champagne and decorative holiday table centerpieces, which were presented to winning couples at each table.

Five of the dinner-dancers took home door prizes. Among the winners were Mrs. R.A. Flores, who won a lamp-clock radio; Ted Nagy won luggage; Doris Kennedy, a lazy susan, and John Kostura and Erma Benak, \$25 cash each. □

*Photos by Jim Avera*







**CHRISTMAS CHARITY** — Ora Lee Price, Precisioneers chairman for the 1968 Christmas Card Charity program at Librascope, puts up one of the campaign posters. Assisting are (left), Jack Naimoli, Precisioneers Rep, Bldg. 17, and Paul Lough, vice president of the employee recreation association. See story on back cover.

**Top Entertainment Planned For Kids' Christmas Party**

This year's Precisioneers Christmas Party for Children of Librascope employees promises to be one of the best ever, according to Lisa Sands, chairman of the event. "We've planned an exciting show with headline entertainment," Lisa said.

Live entertainment includes "Polly Pockets and Her Gang." Polly is a personable storyteller who has performed for numerous Walt Disney recordings. Included in her "gang" are a singer and a clown.

Receiving co-star billing on the show will be Tony Starr, "The Most Irrepressible Showman on Earth." Tony has appeared on TV shows such as Ed Sullivan, Danny Thomas and Spike Jones. His speciality is creating animal figures, headpieces and other surprises from balloons.

Open to all children and grandchildren of Librascope employees, the annual event will be held in the new auditorium at Hoover High School, 651 Glenwood Road, Glendale, on Saturday, December 21, from 9:45 a.m. to 12 noon.

The show will begin with a 30-minute film, "A Gala Day at Disneyland," which features all the attractions, rides and Disney characters. Concluding the entertainment will be an appearance by Santa Claus, himself. Santa will distribute gifts to every child.

**Aid Club/United Crusade Pledges Exceed \$49,000**

Response to the 1968 combined Aid Club/United Crusade campaign, held the week of November 18 throughout the Glendale facility, resulted in annual pledges of more than \$49,000 and for the fourth straight year made Librascope a major per capita contributor in the Los Angeles County United Crusade.

"Employees pledged \$49,022, with participation running high in many departments," said R.L. "Skip" Case, Aid Club Committee representative and chairman of the 1968 combined campaign.

"Average companywide participation was 78%, up 3% from pre-drive totals," said Case. "Fair Share participation is up 6%," he added.

The per capita pledge (average pledge per employee) is \$32.67, another new high at Librascope. The previous high was in last year's campaign when the employee average pledge was \$31.72 per year.

Of the total pledges, \$5,000 will be set aside for in-plant aid to help employees beset by financial emergencies. Some \$7,000 has been designated for specific charities, "write-ins" selected by the donors.

The balance, \$37,000, will go to the United Crusade for distribution among the 256 member charities. Librascope's average per capita pledge to the United Crusade is \$24.67, down slightly from last year's high of \$25.21.

**Cost Reduction Program Goes Over the Top...**

"We owe it all to a lot of very cost-conscious employees," said Whit Robinson, Cost Reduction coordinator, as he told how the CR Program had topped its annual goal.

The Cost Reduction target for the year was \$1,740,000. Savings logged at the conclusion of the eleventh month showed cost reductions of \$1,902,596 so far this year, well over the target.

"The program progressed well this year," Robinson said. "We exceeded our monthly goals six times in the past seven months."

The monthly goal for December is \$145,000. By meeting this target, employees will exceed \$2 million in cost reduction savings in 1968.

**Leto Named Manager Of Encoder Products**

Al Leto has been promoted to product manager-Encoder Products for the Products Division, according to H.F. Penfold, general manager of the division.



Leto joined Librascope in December, 1955, as a production engineer and over the years has worked on many of the major programs at Librascope. Prior to this promotion, Leto was manager of Value/Liaison Engineering in the Systems Division.

His encoder experience dates back to 1955-1958 when he was project engineer on Encoders for the Components Division, (now Products Division).

Leto has a Bachelor of Science degree in Electrical Engineering and Mechanical Engineering from the University of California at Los Angeles, and is now working on his Masters Degree in Business Administration.

Before joining Librascope, he was employed by the Southern California Gas Company as a staff aid designing special tools and instruments. Prior to that he was a design draftsman at the Department of Water and Power, Los Angeles.

He, his wife, Madelyn, a former teacher, and their six children, live in Granada Hills.

**Social Security Taxes Are Going Up...Again!**

Beginning with the first pay period in January, 1969, more Social Security (FICA) taxes will be deducted from employee paychecks.

This is under provisions of a Social Security amendment that was signed into law by President Johnson during 1968.

In 1968, for example, the Social Security tax amounted to 4.4% of the first \$7,800 of employee earnings, or a maximum tax of \$343.20 for the year. In 1969 the tax will be 4.8% of the first \$7,800 of earnings, or, a maximum of \$374.40.

This is an increase of \$31.20 in Social Security taxes.

A matching amount (maximum of \$374.40 per employee) will be paid to the Federal Government by Librascope.

**Two-Day Holiday For Christmas**

"Since Christmas falls on Wednesday this year, we will observe the "Day-Before Christmas" holiday on Tuesday, December 24," said S.L. Briggs, manager of Industrial Relations.

Only under emergency circumstances will employees be scheduled to work the Tuesday before Christmas or on Christmas Day, he said.

**Aid Club Election to Fill Nine Vacancies**

The annual election of committeemen and building representatives for the Librascope Aid Club is scheduled January 10, according to a recent announcement by Mrs. Nancy Laughlin, employee services coordinator.

The Aid Club assists employees beset by personal misfortune, providing financial aid in emergencies. The committee meets periodically to review aid cases submitted by building representatives.

"The election is to fill one committee post and provide eight new building reps," Mrs. Laughlin said.

The new committeeman will replace outgoing Committeeman John Filzenger who has served on the Aid Club Committee since 1965.

Elected committeemen serve three-year terms of office. Building representatives serve for one year.

Nomination posters will be placed on company bulletin boards on December 30. Ballots will be distributed to all employees on election day, January 10.

**DON'T MISS**

**FANTASY on PARADE**

DEC. 22 thru DEC. 31  
TWICE DAILY  
3 PM & 9 PM  
(DEC. 24, 25 & 31 at 3 PM only)

**Disneyland** Premiere 9 PM Saturday, December 21



# *Christmas in California*

*For sheer beauty, few winter scenes can rival the California coastline near Monterey. Photo by Fred Beindorff.*





# Singer- General Precision Notes

## Link's New GAT-1 Hailed As 'Major Breakthrough'

Binghamton, N.Y. — Inclement weather, nightfall and airplane unavailability will no longer be deterrents to flying schools equipped with the new Link GAT-1 ground trainer.

With the GAT-1, a major portion of flight training can be conducted indoors and the unit has become the center of interest in high school, college and flying school training circles.

The trainer is the first in a series of general aviation trainers (GAT) designed to develop the skills required of pilots for both basic and instrument flying.

Congressman Don H. Clausen, a prominent aviation education spokesman from Crescent City, Calif., has described the GAT-1 as a "major breakthrough" in flight training.

## C.F. Bruder Named Senior VP at Singer

New York — Charles F. Bruder, formerly vice president for corporate development, has been appointed senior vice president for corporate relations of The Singer Company.

In his new position, Bruder will supervise the Company's relations with shareholders, the investment and business communities and the general public. He also will continue to represent the company in various corporate development negotiations.

Bruder joined the Company in 1932, serving in a variety of marketing positions. From 1953 to 1963 he was vice president and general manager of Singer's Consumer Products Division.

A graduate of Dartmouth College, he has served as a director of The Singer Company since 1955.



**SEWING QUEEN** — TV celebrity Ed McMahon congratulates 18-year-old Carol Wright of Indianapolis at the 16th annual Singer World Stylemaker Contest in Washington, D.C. Miss Wright was crowned "Queen of Sewing" in the Deb Division (girls 16-18). Other winners included Therese Perez, 15, of Highgrove, Calif., and Wendy Druding, 13, of Cincinnati, Ohio.

## Singer Board Declares Quarterly Dividend

**NEW YORK** — The Board of Directors of The Singer Company declared a quarterly dividend of 60 cents per share on common stock payable Dec. 12, 1968, to shareholders of record Nov. 22, 1968.

The Directors also declared a dividend of 87.5 cents per share for the fourth quarter on the \$3.50 preferred stock prorated from the date of issue to the payable date of Dec. 15, 1968, to shareholders of record Nov. 22, 1968.

Singer has paid dividends without interruption since 1863. Payments have been on a quarterly basis since 1890.

## Italian Acquisition for Industrial Controls Div.

**Morton Grove, Ill.** — Singer-General Precision, Inc., has announced the purchase of Regulator-Controlli Automatici e strumenti per la Industria - S.p.A., an Italian manufacturer of products and systems from combustion, process and guidance control.

The Italian firm will be operated as a wholly owned subsidiary of the Industrial Controls Division of Singer-General Precision, Inc., Morton Grove, Ill.

*The Spirit of Christmas:  
(From Page 3)*

## Truth, Unity and ...a sense of Wonder

Whatever it is that makes a person remarkable, Dory Kramer has it.

A native of Brooklyn, N.Y. and the mother of four children, she studied art for awhile at the Brooklyn Museum, but has had no formal art training.

While she has sculptured in clay, the "Madonna and Child," and most of her work in recent years has been in cloth-mache, a relatively new technique similar to paper-mache.

"The cloth provides a texture and old-world quality that is unique and seems well suited to religious and historical subjects," she said.

As might be assumed, Mrs. Kramer is a person of deep religious convictions, yet she possesses an amazing depth of tolerance and understanding.

"Judaism teaches tolerance, an endless curiosity and questioning," she said. "It is these teachings that have led me to a study of many religions of the world."

According to Mrs. Kramer the most fascinating thing about religion is that the mystics of Moslem, Christian, Brahmin and Jewish faiths, for example, all seem to have related similar experiences and expressed similar philosophies concerning the unity of all things under God.

"To an artist, the need to create is important and real...just as the Christmas story is important and real," she said, "and in religious art such as



Artist Dory Kramer, wife of Librascope's Judd C. Kramer, shows off a cloth-mache sculpture, "The Menorah," symbol of the Jewish holidays of Hanukkah. Mrs. Kramer also created the "Madonna and Child" figure pictured on this month's Librazette cover.

"Madonna and Child," I am seeking to express the truth and unity that I have found in all religions."

Since 1965, she has created eight religious figures in cloth-mache. The first was an Angel, then came the three Wise Men, Madonna and Child, Moses, The Menorah, symbol of the Jewish holidays of Hanukkah, and most recently a statue of Buddha.

"In each one of them I have tried to understand...to capture the sense of wonder that lives in the religions these figures symbolize," Mrs. Kramer said. "In the attempt, I think that in a small way I have given my own life more meaning."

To paraphrase Dory Kramer, one might say that understanding another person's religion is something like wanting to cry for a child that isn't yours. It requires tolerance, patience, devotion...and more. It requires love.

And that, after all, is what Christmas is all about. □





**POPPA RETIRES** — George Poppa (standing, right), is honored by friends and co-workers at a party held in honor of his retirement on November 11.

## George Poppa Retires After 15 Years at Librascope

Veteran machinist George Poppa retired November 11 after 15 years in Librascope's Machine Shop.

Poppa worked the second shift as a Grinder - Tool and Cutter, during most of his years with the company.

A resident of Eagle Rock, Calif., since 1949, Poppa says he plans to keep occupied. He recently obtained a duplex apartment building and plans to move it to a lot he owns.

Formerly president of the Librascope Bowling League, Poppa also was active in the Precisioners.

## Junior Achievers Sell Stock, Products Here

Two officers of Wize Enterprize, a Junior Achievement company sponsored by Librascope, visited both the Systems Division and Products Division on November 21.

Miss Regina Shermer, president, and Miss Melanie Young, treasurer of the newly formed company, demonstrated Wize Enterprize's product, "Power-Flower", a night light decorated with flowers. The light has an operational life of 25-thousand hours, they stated.

Both of the young ladies sold stock in their company, at \$1 per share, to various Librascope executives.

Supervising the tour was Librascope coordinator Mrs. Nancy Laughlin and JA Advisors Wes Hardweg and Mac McCarthy.

## Six Long Holiday Weekends in 1969

Librascope employees can enjoy six long holiday weekends in 1969. Four are 3-day weekends and two are 4-day weekends.

The Floating Holiday is combined with Thanksgiving Day for a 4-day weekend, and the Day-After Christmas, December 26, is combined with Christmas Day for a 4-day weekend.

The four 3-day weekends are formed by holidays on Good Friday, April 4; Memorial Day, Friday, May 30; Independence Day, Friday, July 4, and Labor Day, Monday, September 1.

The full holiday schedule for 1969 includes:

New Year's Day - Wednesday, January 1.  
Good Friday - Friday, April 4.  
Memorial Day - Friday, May 30.  
Independence Day - Friday, July 4.  
Labor Day - Monday, September 1.  
Thanksgiving Day - Thursday, November 27.  
Floating Holiday - Friday, November 28.  
Christmas Day - Thursday, December 25.  
Day-After Christmas - Friday, December 26.

## Credit Union Schedules Annual Meeting In January

The annual meeting of the Librascope Employees Credit Union (LECU) will be held Wednesday, January 29, in the Conference Dining Room of Bldg. 3, starting at 4:00 p.m.

The meeting will cover announcement of the 1968 annual dividend, a report on operations, and election of officers for expired terms on the board of directors, credit committee and supervisory committee.

Buzz Newman, president of the Credit Union, invites all members to attend the meeting. Refreshments will be served.

"The Credit Union has room for many new members," Newman announced. "The advantages of being able to borrow money at the low Credit Union rates, with free insurance benefits to members both on loans as well as savings accounts up to one thousand dollars, are something all employees should enjoy."

"We also have inactive funds that are just waiting to pay all those Christmas shopping bills," Newman added.

## Safety Council Urges Caution at Christmas

The December holiday season, while replete with the pleasures of a joyous period, also is a season of high accident hazards and, to help reduce the accident potential, the Greater Los Angeles Chapter of the National Safety Council has issued a series of suggestions on greater holiday safety both in driving and in the home.

**For safety in holiday travel, the Safety Council has drafted these suggestions:**

In your Holiday driving...drive defensively. DEFENSIVE DRIVING means driving with the ability to take evasive action to prevent accidents if another motorist...or pedestrian...should do the wrong thing.

REMEMBER three out of four fatal Christmas accidents involve driving too fast for existing conditions or in excess of posted speed limits.

REMEMBER more than one-half of all traffic fatalities in December involve drinking drivers and one out of four December traffic accidents involves a pedestrian who had been drinking.

REMEMBER fatigue is a factor in many traffic accidents at Christmas time. Don't drive yourself to a possible accident by driving when you are too tired.

REMEMBER pedestrian congestion is at a peak level during the Holiday shopping season and that many pedestrians, heavily laden with packages, may create hazards for you.

REMEMBER the six hours of Christmas Eve are the most deadly period of the holiday with the hourly rate for fatal accidents approximately five times greater than for the balance of the holiday.

## Golf Club Elects New Officers for '69

As the result of a recent election and ensuing runoff, Mark Ferry has been elected to head a slate of new officers for the Precisioners Golf Club in 1969.

Elected to serve with the new club president were Dick Regan, vice president; Bob McFarlin, secretary-treasurer, and Carl Culver, committeeman.

"We offer our congratulations to the new officers," said outgoing president Charlie Gilkey.

Ferry, Regan, McFarlin and Culver will be officially installed as 1969 Golf Club officers at a club business meeting scheduled January 8, 1969, Gilkey said.

## New Weekly Deductions For Group Insurance

"The company intends to change Group Insurance deductions from a monthly to a weekly basis," announced Frank Yapp, manager of Compensation and Employee Benefits, "beginning with the New Year."

"We feel it will work into family budgets more satisfactorily," he said.

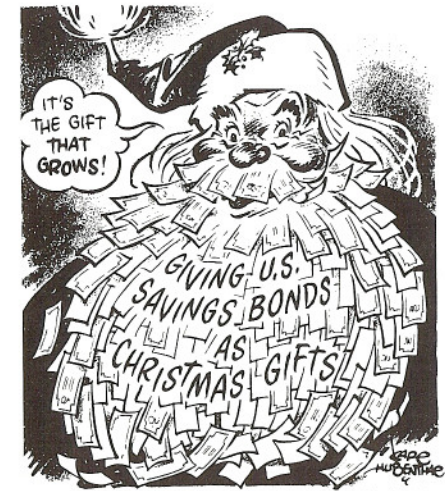
## Holidays are a Good Time To Check Insurance Coverage

"Now is the time of the year," said Frank Yapp, manager of Compensation and Employee Benefits, "to make sure you have your Group Insurance dependent coverage correctly listed."

During the past year, many employees have married or had some other changes in their families. However, some may have failed to change the dependent coverage on their policies. "It is particularly important that you have the correct beneficiary listed under the life insurance benefits of your policy," Yapp said.

Dependent children over 19 years of age are not covered by Group Insurance medical benefits unless they are full time students and depend solely on you for support. In such cases, the dependents may be covered until age 23.

For information regarding beneficiaries and dependent coverage, contact: Group Insurance Section, Bldg. 3, Ext. 1240.



By Karl Hubenthal, Los Angeles Herald-Examiner





Jeanette D. Cady  
20 years — Sept. 17



Carl Culver  
20 years — Sept. 20



Elmer W. Lehman  
20 years — Sept. 1



Jean P. Emond  
15 years — Oct. 6



John P. Filzenger  
10 years — Oct. 22



Lyle K. Hoyt  
10 years — Oct. 13



Cassio J. Innocenti  
10 years — Sept. 24



Michael P. Kata  
10 years — Oct. 21



Leo J. Heinz  
15 years — Sept. 16



Andre J. Huot  
15 years — Sept. 21



Robert E. Laperie  
15 years — Oct. 9



Harold G. Odland  
15 years — Oct. 20



Fredrick W. Machal  
10 years — Sept. 8



Harry D. Milen  
10 years — Oct. 23



Dixie A. Robertson  
10 years — Oct. 10



Charles J. Rooks  
10 years — Sept. 2



C. Fred Beindorff, Jr.  
10 years — Sept. 3



Irma S. Benak  
10 years — Oct. 23



Ann D. Binyon  
10 years — Oct. 7



Melinda S. Boyd  
10 years — Oct. 21



Richard P. Schleicher  
10 years — Sept. 29



Anton U. Schneider  
10 years — Oct. 6



Adeline M. Thode  
10 years — Oct. 7



Hazel J. Valerio  
10 years — Sept. 30



Robert L. Corbin  
10 years — Sept. 18



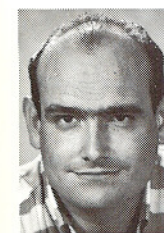
Helen M. Dorrah  
10 years — Sept. 17



Robert E. Douglas  
10 years — Oct. 13



Robert G. Elkins  
10 years — Oct. 13



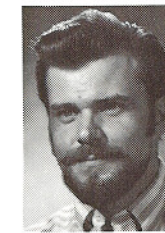
George F. Webb  
10 years — Oct. 7



Yvonne V. Camen  
5 years — Oct. 14



M. Ted Embree  
5 years — Oct. 30



David T. Lehto  
5 years — Oct. 9



# LIBRAVETS



Estella M. Nichols  
5 years — Sept. 23



Wallace H. Robinson  
5 years — Sept. 18



James E. Young  
5 years — Sept. 18

## NOT PICTURED:

Manuel Salvador, Jr.  
15 years — Sept. 29

James H. Holmes  
10 years — Oct. 6

Paul E. Beaver  
10 years — Sept. 23

Dave L. Palmer, Jr.  
10 years — Oct. 20

Warren R. Henderson  
10 years — Sept. 29

Virginia R. Beach  
5 years — Sept. 17

Vern H. Jarvis  
5 years — Oct. 14

## Precisioneers Plan 1969 Elections

A nominating committee has been appointed to coordinate the 1969 Precisioneers election, according to Joe Schlegel, president of the employee recreation association.

Mrs. Jayne Stanek, Bldg. 3, is the chairman of the Election Committee, Schlegel said.

Committee members include Paul Lough, Bldg. 1; Lisa Sands, Bldg. 3; Carmen Rodriguez, Bldg. 16, and Fred Killips, Bldg. 17.

Candidates are being sought to fill positions as president, vice president, secretary, treasurer, director-at-large, and more than a dozen building representative posts.

The election is scheduled for Wednesday, February 12.

## Kearfott Golfers Win Annual Tournament

In a meet hosted by Librascope's Precisioneers Golf Club at Shorecliffs Country Club, San Clemente, Calif., the golfers of Kearfott - San Marcos proved victorious, gaining possession of a trophy that has changed hands in each of 12 meetings by the two clubs.

Librascope golfers won the annual Librascope vs Kearfott tourney last year and had hoped to retain possession of the trophy this year and thus break the yearly exchange pattern.

"But our luck didn't hold," said Club President Charlie Gilkey. "All we can say is 'Wait until next year'."

The Shorecliffs course was interesting and afforded several unique and challenging holes, Gilkey said.

Many of the fairways were narrow and bounded by ice-plant covered slopes that raised havoc with those golfers who were not down-the-middle shooters.

Kearfott - San Marcos will be the host club next year, will arrange the matches and choose the course. Needless to say, the Precisioneers Golf Club is already at work planning strategy for next year's meet and hopefully, regaining possession of that trophy.

## W-2 Forms to be Mailed in January

The Payroll Department will make its customary mailing of W-2 forms to employees' homes during January, 1969, according to a recent announcement.

To keep forms from going astray, employees who may have moved during 1968 are urged to make certain they have completed change-of-address forms. All addresses must include zip codes.

Change-of-address forms are available at the Personnel Department, Bldg. 3.

Employees whose exemptions may have changed can obtain a new W-4 form (Withholding Exemption Certificate) at Personnel.

## For A Safer Holiday

For holiday safety at home, make certain that all toys purchased for children are safe...incapable of causing shock, fire or explosion. Also assure that toys purchased for toddlers cannot be swallowed, either whole or in part.

# The Last Page

## Singer TV Special Set New Year's Eve

The Singer Company's Consumer Products Division plans to greet 1969 in style with a New Year's Eve television special.

According to a recent announcement, Singer will sponsor a full hour of "The Tonight Show," starring Johnny Carson, on December 31, 11:30 to 12:30.

Join in the fun. Tune in The Tonight Show on New Year's Eve.

## New Year's Had Its Moments in History

Many stories are told this time of year about Christmas, its traditions and history, but a look at the record books shows there is more cause for celebrating New Year's Eve and New Year's Day that people know about.

For example, one important New Year's "flash" occurred Dec. 31, 1879, when a jovial crowd gathered at Menlo Park, N.J. to witness the first public demonstration of a newfangled gadget, the incandescent lightbulb.

Slavery died on Jan. 1, 1863 with the signing of the Emancipation Proclamation. That same day the development of the West began as the first "Homesteader" staked out a plot of ground in Nebraska.

Another important aid to national development, the influx of immigrants, grew so large that a formal receiving center became necessary. Ellis Island began serving that purpose on Dec. 31, 1890.

Though he didn't make his famous ride on New Year's, a famous American, Paul Revere, was born on Jan. 1, 1735. New Year's Day, 1752, saw the birth of Betsy Ross, credited with sewing the first American Flag, while Dec. 31, 1880 marked the birth of Gen. George C. Marshall, onetime U.S. Chief of Staff, Secretary of State and Secretary of Defense.



**UNSUNG HEROINES** — Much has been said in favor of the Librazette's new Mini-Mag format and pictorial coverage but there are people working behind the scenes who deserve credit for helping provide the magazine's professional appearance. Among them are Sharon Thompson, Repro Typist, left, who sets the type we so often take for granted, and Ann Clark, Proofreader, who catches our mistakes.

And, in 1946, with Hitler dead and his empire in ruins, President Harry S. Truman officially proclaimed the end of World War II on Dec. 31.

So, when you think of commemorative dates, don't overlook Dec. 31 or Jan. 1. These are days of tradition, great beginnings and dramatic endings.

## The Man Who Created ...Santa Claus

Just over a hundred years ago during the American Civil War, a talented young artist was building a reputation that would establish him as one of the greatest political cartoonists in history. His name was Thomas Nast.

Many of the cartoon figures that spilled from Nast's imagination onto the pages of Harper's Illustrated Weekly became classic symbols that have survived to this day.

Among them are the Republican elephant, the Democratic donkey, the square paper hat of American Labor and that fat, jolly old elf in the fur-trimmed red suit, Santa Claus.

Nast pictured Santa in several Harper's illustrations at Christmas time in 1863. The world has since accepted his Santa Claus as the universal portrayal of its favorite Yuletide visitor.





# *A Living Legend of Christmas*



To the men and women of Librascope, the words "Merry Christmas" and "Happy Holidays" are more than a greeting. Behind each holiday wish is a helping hand...stretched out to children in need. Because to us, Christmas is a time to "Help A Child," and it has been so at Librascope for the past 13 years.

It was with this thought in mind — to help a child — that employees adopted the Christmas Card Charity program in 1955. Beginning with that year, employees abandoned an unwieldy greeting card exchange, took the money they normally spent on cards and postage, and donated it to a local charity. The result: \$2200 for the Los Angeles Orphans' Home.

This year donations go to The Cleft Parent Guild to help with the tremendous costs of surgery, orthodontia and speech therapy for children born with cleft palate or cleft lip. It is a charity worthy of consideration.

You can help by making a donation and placing an ornament upon one of the blue Christmas Tree posters in your work area. The more ornaments there are, the brighter the future for some child.

This program is a tradition at Librascope. But to hundreds, perhaps thousands of children helped over the past 13 years, the Librascope Christmas Card Charity is a legend...a living legend....of Christmas.

Help keep it alive.