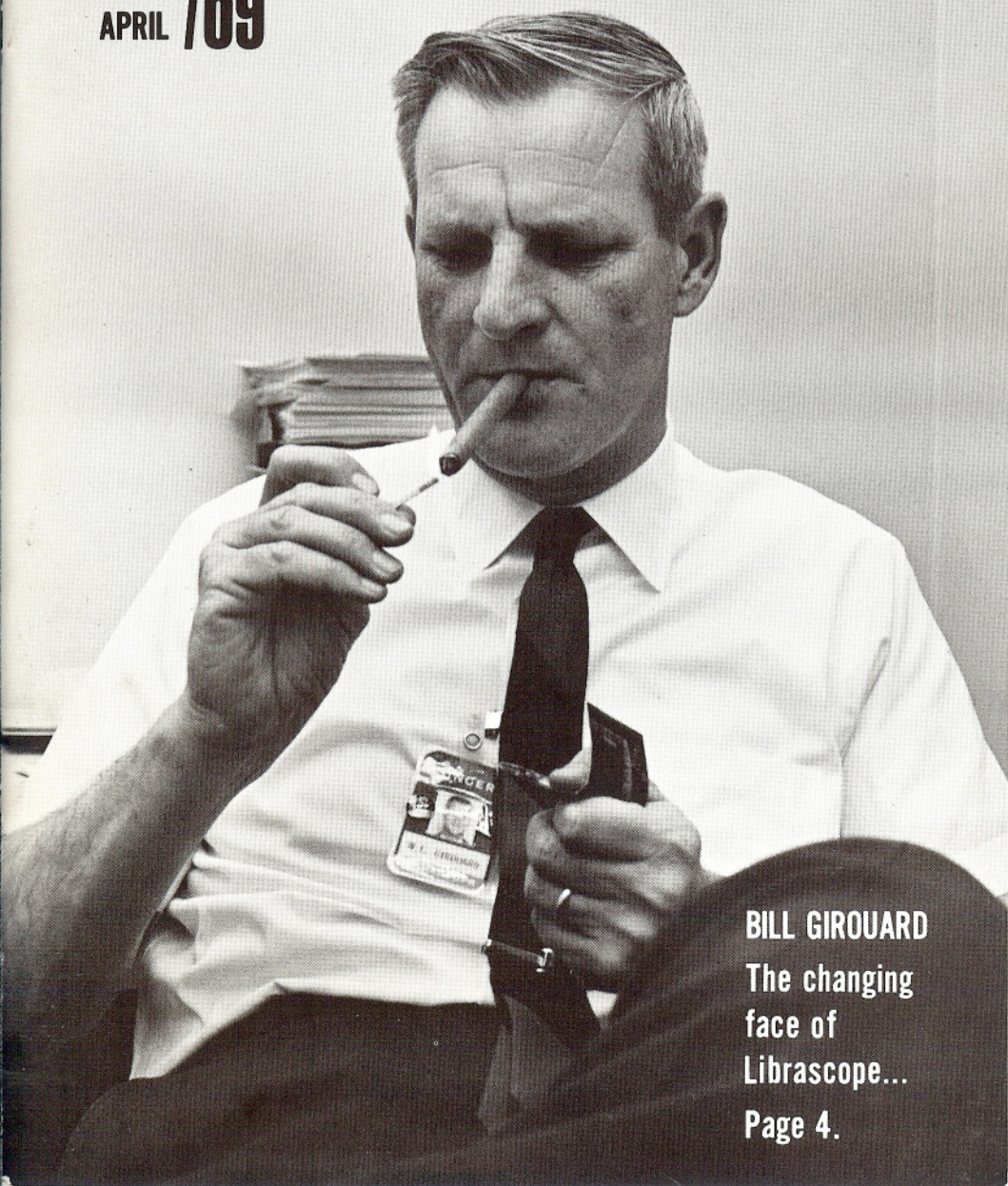


Librazette

MARCH
APRIL /69



BILL GIROVARD

The changing
face of
Librascope...

Page 4.

Librazette

Vol. 15, No.1
March / April 1969



COVER

When questioned concerning office remodeling, Bill Girouard responded frankly, discussing progress and problems alike. Meanwhile, photographer Arthur Adams was using a similarly "candid" approach, producing a series of warmly human photos like this one. For more, turn to page four.

In this issue

- 5 --- Q & A with Bill Girouard
- 12 --- Children's Easter Egg Hunt
- 13 --- New ASW Contracts
- 14 --- Teenage Tycoons
- 20 --- Singer Plays a Vital Role
- 25 --- Cost Reductions Top Goal
- 28 --- Cagers in High Gear
- 34 --- Singer-General Precision Notes
- 36 --- Libravets
- 39 --- The Last Page



Earl Erickson, Editor
Jim Norwood, Art Director

Member: International Council of Industrial Editors,
Southern California Industrial Editors Association.

The Librazette is published bi-monthly for employees of Librascope Group, Singer-General Precision, Inc., by the Public Relations Department, Earl W. Erickson, director. Editorial offices are located at 808 Western Avenue, Glendale, California 91201. ©1969, Singer-General Precision, Inc.



Discussing office layouts and remodeling plans with W. F. Girouard, manager of Industrial Engineering (second from left) are Ken Dohlin, (left) Industrial Engineering draftsman, Ivan Franklin, supervisor of Facilities Planning, and Cliff Dahl, Plant Engineer.

There have been some mighty interesting changes in the look of Librascope lately, and it appears more are on the way. For the reasons behind the remodeling we decided to go to the men with the answers. The following is an interview with William F. Girouard, Manager of Industrial Engineering, Cliff Dahl, Plant Engineer and Ivan Franklin, Facilities Coordinator.

Photos by Arthur Adams and Jim Avera



Q & A

Questions & Answers

With W. F. "Bill" Girouard
manager of Industrial Engineering

Q. — Bill, there is a lot of activity going on around the company under your direction. We've just seen some extensive remodeling in the engineering sections and it looks like it is going to continue. Can you bring us up to date?

A. — Certainly, but before we get into specifics maybe we should just talk generally about the overall problem, OK?

Q. — What do you mean, the overall problem?

A. — Well let's reflect for a minute on what has happened to "the office" in the past 100 years or so. During the mid 1800's our agrarian economy put most of the workers out in the fields, but the past century has seen one of the most interesting movements of workers, as far as environment is concerned, since recorded history began. The current end result — the office as we have come to know it "is an adolescent statement starved for appropriate definition and somewhat oblivious to the forces of

change". Those aren't my words, but the opinion of one of the most respected office designers in the world. This expert goes on to point out that the office has become the place where four-tenths of the country's working population spend one-third of their lives. Obviously in a company such as ours, the figures are even much higher.

Q. — What does that mean in terms of the problem, here at Librascope?

A. — We had run-down, crowded facilities, organized in a cubby-hole arrangement, that resulted in poor communications among the people in the offices, cramped working conditions, and unnecessarily high maintenance costs.

Q. — It sounds like we should have set the place on fire.

A. — Well really it was pretty bad. And of course it wasn't going to get any better — in fact worse — unless something was done.

(Continued)



Q. — Fair enough. What was done.

A. — Let me give you a little background. Ivan Franklin (supervisor of facilities planning) and Cliff Dahl (plant engineer) are really the two fellows who have made this thing go so far. They put in a lot of hours and made a lot of studies to make sure that what we came up with was the best arrangement possible. Here's what we wanted to do. We wanted to end up with the best possible working conditions for everybody, improve density, and reduce our maintenance costs, with the emphasis on improved working conditions.

Q. — What do you mean by "density"?

A. — The number of square feet per person.

Q. — Right, please go on.

A. — Well, Cliff and Ivan have been studying the changes that are

When management requested a solution, we were ready with plans for the 'new look'...

taking place in office space around the country and the reasons for these changes. Further, they have been watching and noting our specific problems.

Q. — "Specific problems"?

A. — Oh, such things as requests for desk lamps from office areas led us to studies of our light levels and to the development of improved lighting standards. Complaints about air conditioning in an area which should have been cool led us to studies of air movement and physiological cooling; noise problems led to acoustical analysis and so on.

Q. — Did you have any expert assistance in these areas?

A. — It is my feeling that Cliff and Ivan are well qualified in these areas, but to answer your question, yes we did. We brought in consultants from such diverse

fields as color dynamics and acoustical design.

Q. — Sounds interesting —

A. — It was interesting, and challenging. The result was that when management requested a solution to our problems, we were ready with plans and specifications for what you now see as our "new look".

Q. — Thank you. Now could you tell us the reasoning behind the arrangement with the people in the center and all those offices around the perimeter?

A. — Ivan, would you answer that. Ivan. We selected this arrangement for a variety of reasons — the offices are around the perimeter because the area wall serves also as an office wall, saving construction costs;

(Continued)



***'New conference rooms
are being utilized
constantly,
proving the
concept was sound'***

— functional units are delineated by the perimeter-area concept;

— communications between the people in a group is improved, because it is easier to get up and talk to someone at a desk than it is to enter an office;

— ample conference room space is made available for all personnel. If any one factor is responsible for the success of our new look, it is the conference rooms. We have made provision for a number of these, of various sizes, all fully equipped with projection screens, variable lighting, comfortable chairs, etc. These rooms are being utilized constantly for all manner of reasons, proving that the concept was sound.

Q. — Bill, can we discuss the overall change in acoustics and better lighting?

A. — One of the greatest strides in office structuring in recent years has been the increased understanding of sound, and noise, (which are two very different things) and their relationship to the working capacities of office people. Let us note that it is possible to demonstrate that typical office sounds create an acoustical pattern which makes speech privacy possible. Thus the prospect of working in a "noisy" environment needn't induce panic. There are two variables that need to be kept in mind: scale of frequency and

loudness. One reason sounds are perceived as different is because of their difference in quality and speech content. Scale of frequency, therefore, becomes one of the variables. Loudness, or apparent loudness is the other variable. Noise levels are measured and stated in terms of a decibel scale. Without defining a decibel, let me point out that a ten-decibel increase in sound level would be interpreted by most people as a doubling of loudness, regardless of what level of the scale it is in. This is the reason we have paid so much attention in this recent remodeling job to acoustics. It is really the advancements in our understanding of sound that has made so many of these other changes possible.

Q. — Can you list the areas that have already been affected?

A. — Well the engineering area in building 1; a portion of the logistics area in building 2, and a portion of building 3 which is occupied by Engineering. As time goes on — and costs and other considerations permit — the rest of building 2 and all of building 3 will ultimately be remodeled.

Q. — Can you tell us about the improvements in lighting that have accompanied this remodeling program?

A. — Let's have Cliff answer that one. Cliff: Not only has research been done on acoustics, it has also been done on lighting. We formerly used Official Lighting standards: 75-100

(Continued)



'The emphasis is on improved working conditions, but maintenance is a big, big consideration'



foot-candles were recommended for office work and 125 foot-candles for close assembly work.

Q. — Foot candles?

A. — A measure of the amount of light falling on a surface.



Improvements in Engineering, Bldg. 1, include expansive use of glass on perimeter office walls, acoustic ceilings and improved lighting.

Q. — Go on —

A. — The latest standards for lighting recommend 250-300 foot-candles for office work and close assembly; our maintained light level in our new area is 280 foot-candles. It has been shown that this much light is comfortable for personnel and does a great deal toward relieving eye-strain.

Q. — Bill, you mentioned earlier that maintenance was a big consideration in the program. How big?

A. — Big Big. With all of the talk about acoustics and lighting and density and "happiness" in the office one of the most important considerations is maintenance and we have already found a return in this area. It is now accepted throughout industry

that carpeting is a big plus as far as maintenance is concerned so you have the double value of nicer working conditions plus savings with the installation of carpeting whenever possible. The outside contract maintenance firm Librascope uses has already reduced their charges in the areas changed and as more remodeling is done we expect to see these costs even further reduced.

Q. — A final comment?

A. — One of the objections to change is the kind of disruption it brings to our life. But we need to not only change with ease but to achieve a well appointed and resolved solution to the problem. I think we are finding our way here at Librascope to that solution. I'm convinced we shall soon find that the changes have been good for us all. □



RETIREE — Walt Lebert, 23-year Libravet, retired March 1 and plans to travel a bit before settling down to enjoy life at Shelter Isle Mobile Estates. See story below.

Shelter Isle Relaxation Planned By Walt Lebert

W. W. "Walt" Lebert, senior coordinator in customer service (21-341) joined the growing list of Librascope retirees when he completed 23 years service on March 1.

Walt is a native of Long Island City, New York, and graduated from elementary and high school at Staten Island, before attending Pratt Institute, Brooklyn, N.Y.

His Librascope career started in 1946 (following 27 years of service with the S. S. White Dental Mfg. Co.,) as an engineering draftsman and he later worked as design draftsman, designer and standards analyst.

For the past five years Walt and Kay Lebert have made their home at Shelter Isle Mobile Estates. They have one daughter, Doris, a granddaughter, Dorene, and are the great grandparents of little Donna Lee. They are looking forward to a retirement trip to Rome, Georgia and "then we'll settle down to enjoy all the activities and weekend parties at Shelter Isle. They can't be beat anywhere", Walt says.

Stereo Tape Sale

A Precisioners stereo recording tape sale has been announced by Jack Naimoli, coordinator of tape sales for the club.

The tape, of superior quality, is 1200 feet, 1/4 inch on 7 inch C-slot reels, 1 1/2 mil mylar. Tape, reel and box are being sold for the price of \$1.50 for the package. Call Extension 1272 for orders.

Aid Club Committeeman, Building Reps Elected

Librascope employees went to the polls early in January to elect one new member to the Aid Club Executive Committee and eight building representatives.

Slightly more than 65% of the Aid Club's total membership voted in the election.

Elected to a three-year post on the Executive Committee was George Manus of Bldg. 1. He will serve with incumbent committeemen Paul Glass, chairman of the Executive Committee; Skip Case, treasurer; Jim Avera, secretary, Ed Mason and Harold Newbanks.

Jack Naimoli was appointed to the committee to complete the term of office of Librascope veteran John Gloyd who died last month.

Building representatives elected include Lee Frederick and Roberta Holmquist, Bldg. 1; Natalie Lunney, Bldg. 2; Pat Ha'o, Bldg. 3; Pat Hansen, Bldg. 15; Ed Ritts, Bldg. 16, and Kay Small and Carmel Kirkpatrick, Bldg. 17.

Building reps serve one-year terms of office, while members of the Executive Committee serve for three years.

The Aid Club provides an effective system of collecting and distributing donations to recognized charities, and to provide emergency financial assistance for employees (In-Plant Aid). Building reps obtain In-Plant Aid information and submit recommendations to the Executive Committee which administers the funds.

Librazette Wins Awards In Regional Competition

The Librazette has won two major awards in the Southern California Industrial Editors Association annual competition. The awards included Best Black & White Photograph, second place, and a third place award in Publication of the Year competition.

"Although the third place award for Publication of the Year seems the lesser of the two honors, we are especially proud of this one since the competition was fierce," said Earl Erickson, Librazette editor.

Librascope's mini-mag competed against scores of magazines in the annual contest, finishing behind Fluoroscope, a four-color external produced quarterly by Fluor Corp. First place went to SDC Magazine, a monthly produced by System Development Corp.

N.J. Cronk Appointed New Librascope Controller

N.J. "Jim" Cronk, finance manager for the Systems Division, has been appointed controller for Librascope by R.G. Johnson, vice president and treasurer of Librascope.



Cronk

Cronk has been with the Systems Division of Librascope since 1961. In this new position he will assume the additional duties of controller for all divisions of Librascope.

He attended Iowa State Teachers College and is a graduate of the University of California Los Angeles with a Bachelor of Science degree in Accounting and Mathematics. A California Certified Public Accountant, he was formerly a senior accountant with the national accounting firm of Ernst and Ernst. Prior to joining Librascope, he was controller of Axelson Manufacturing Company, division of U.S. Industries.

Cronk is a Navy veteran of World War II and lives in Glendale.

Systems Division Product Assurance Manager Named

Herbert Meyer, manager of Reliability Systems Division, has been promoted to manager of Product Assurance, Systems Division, according to a recent announcement by Vice President and General Manager M. Center.



Meyer

Walt Picker, former Product Assurance manager, will devote his attentions to the MK 78 program, as project manager.

Prior to coming to Librascope Meyer was with the Radioplane Division of Northrop Aviation, as a unit engineer supervising the reliability analysis of data processing.

Previously associated with Lockheed Aircraft Missile System Division and Bell Aircraft, Meyer holds a B.S. degree in physics from Columbia University and has done additional work in electronics, engineering and business at the University of Buffalo and the University of California Extension, Los Angeles.

Meyer and his wife, and two children, reside in La Crescenta.

New ASW Contracts Total \$5.2 Million

Librascope's Systems Division has been awarded a \$1,400,000 contract by the U. S. Naval Ordnance Systems Command for follow-on work on a major antisubmarine warfare weapon control system.

The announcement was made in Washington, D. C., by Representative H. Allen Smith (Glendale).

Other significant contracts awarded to Librascope during the first quarter of 1969 include:

*ASW Weapon control (follow-on) \$2.2 million.

*MK-48 Spares, \$1.4 million.

*DLG Modernization Field Service, \$223,808.

Employees Invited to Open Hearts (and veins)

Jeri Tichenor, chairman of the Librascope blood donor drive, has invited all employees to join in the next "blood letting" on April 25 at the Griffith Park Manor.

Blood will be taken from 12 noon until 4:30 p.m.

The Librascope blood bank is established and maintained to assist employees whenever they are in need of blood.

The bank is administered, with the cooperation of the American Red Cross, by a committee appointed by the Precisioners General Committee. This committee arranges for the collection of blood from employees and the distribution of blood in accordance with the following provisions:

Any employee shall be entitled to draw blood for himself and immediate family. The immediate family shall mean husband and wife, father and mother, brother and sister, and children living in one household. Any employee shall also be entitled to draw blood for any other dependent for whom the employee is financially or legally responsible.

The Precisioners committee for the administration of the blood bank is composed of a representative of the Executive Committee, a representative of the Industrial Relations Department, and the Industrial Nurse.

Requests for blood should be submitted to Nurse Marge Makalonis, building 17, or extension 1244.



POWER FLOWER - A 'Wize' Investment

"Mac" McCarthy, left, sales advisor, shares a little instruction time with Mario Prado, Wize Enterprize vice president of manufacturing. Object of the instruction is secretary Dianne Slac.

Photos by Arthur Adams

How many teenagers do you know who can talk intelligently about such things as chartering a corporation, profit and loss, depreciation, or liquidation proceedings?

More than 100,000 youngsters in the U.S. are learning about these things this year through personal experience. They are participating in Junior Achievement, a national program in which teenage high school students learn free enterprise by organizing and operating their own companies.

There are 2,000 Junior Achievers organized into 125 corporations in Southern California alone.

These companies operate in eight-month cycles from October to May, meeting for two hours one evening each week in JA Business centers that have been established throughout the southland. Each company is sponsored by a "Big Brother" business firm which provides executive advisors, skilled in accounting, production and sales, to help the youngsters learn the fundamentals of business.

Librascope employees are currently participating in this worthwhile program, directing the company-sponsored Wize Enterprize, the sixteenth company sponsored by Librascope since our involvement in the JA program.

There is still a story that goes around JA offices every year of the company that came up with a "gimmick" idea a number of years ago. All they did was take pill-shaped candies, put them into jars and labeled them "funny pills", with appropriate heads like "for tired golfers", etc. The company did so well - broke all kinds of sales records - that one of the youngsters decided to resurrect the company the following year when he went to college. Imbued with the profit motive he did so well he made \$16,000 in one year!

Wize Enterprize's product, POWER-FLOWER, is a flower-mounted night light that is guaranteed for 25,000 hours of operation and costs only a few cents a year for electricity.

(Continued)

Nancy Laughlin, Librascope employee service coordinator, and Public Relations' "Mac" McCarthy, make sure the POWER FLOWER production line goes all out. JA achievers, from left, are: Dan Cangemi, Richard Thompson, Dianne Slac, Mario Prado, Nancy King, and Bill Goldsmith.



'PROFIT'

is the key word

for teenage entrepreneurs

The Junior Achievement program is coordinated by Mrs. Nancy Laughlin, Librascope employee service coordinator. Management advisor is Wesley Hardweg, Jr., of Spares Provisioning & Packaging; production advisor is Ivan Franklin, supervisor of Facilities Planning; sales advisor is "Mac" McCarthy of Public Relations. Rusty Dunham of Industrial Relations is alternate management advisor, while Ralph Delle Fave of Quality Control is the alternate sales advisor.

The average JA company consists of 15 to 20 youngsters. To raise the necessary capital for production of the product which members of the company decide to make, the achievers sell stock to friends, relatives and neighbors at \$1.00 per share. Only one share of stock is sold to each investor. It's estimated that more than 25,000 southern Californians are currently stockholders in JA companies.

Following the third or fourth meeting of the year, corporate officers are

elected. These officers direct the other members in buying materials, setting up production schedules and marketing the product. It may be memo pads, planter boxes, ash trays or jewelry - anything the young people think can be sold.

When the company product is ready for the market, Achievers do their own selling, from door to door, in the lobby of a manufacturing plant, or to a department store buyer. They learn that a product must be sold on its

merits, at a price the consumer is willing to pay.

Businessmen see Junior Achievement as one of the outstanding educational activities in the country today. It gives the young people a chance to see what business is all about before they are faced with the necessity of choosing a career. They begin to understand the relationship between labor and management, sales and production, costs, profits and wages.

(Continued)



Management advisor Wesley Hardwegg, left, and sales vice president Bill Wise check trophy won by the group for outstanding JA effort. Display in background is "point of sale" display that won first prize in the East Valley Center and second prize in Regional Southern California competition.

Ralph Delle Fave, alternate sales advisor, joins Dan Cangemi, for a light moment during the regular Tuesday night work session.



Rusty Dunham, alternate management advisor, right, checks the finished, packaged product with achievers Nancy King and Bill Goldsmith of the Wize Enterprize sales force. Night light sells for \$2.00 and is currently being sold throughout the plant.

**'Our Achievers
have learned their
lessons well...'**

Our kids of Wize Enterprize have learned their lessons well this year under the direction of their Librascope adult advisors. They have won first prize in the Point of Purchase contest for the East Valley Junior Achievement Center (where they meet each Tuesday evening), and second prize in the regional contest involving other centers in southern California. In addition, Wize Enterprize's booth won third prize in the "Beautiful Downtown Burbank Day" in competition with 87 other Junior Achievement companies.



NASA Photos

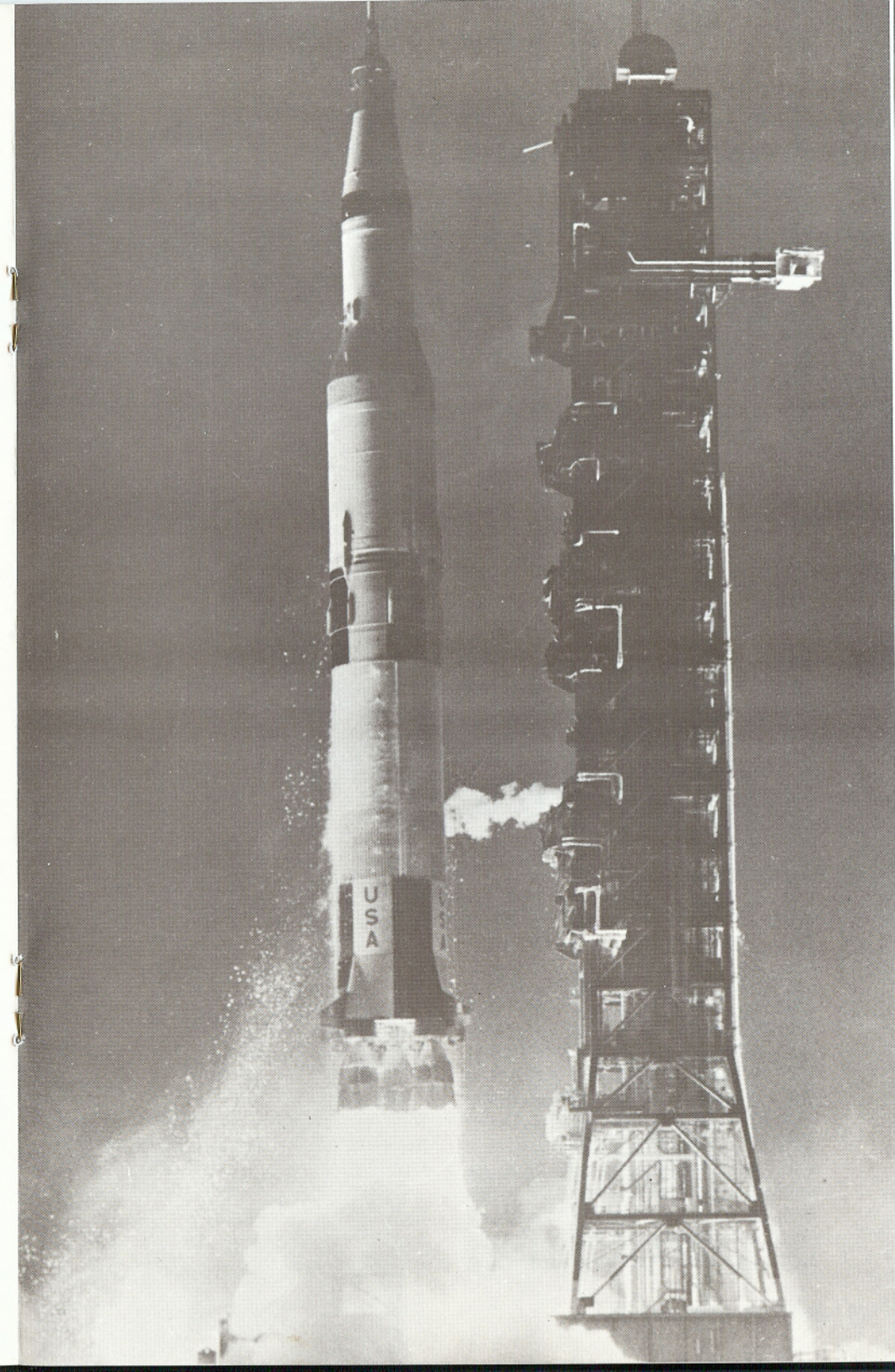
Singer Products Play Vital Role in Apollo's Exciting Game of...

CELESTIAL HIDE-AND- SEEK

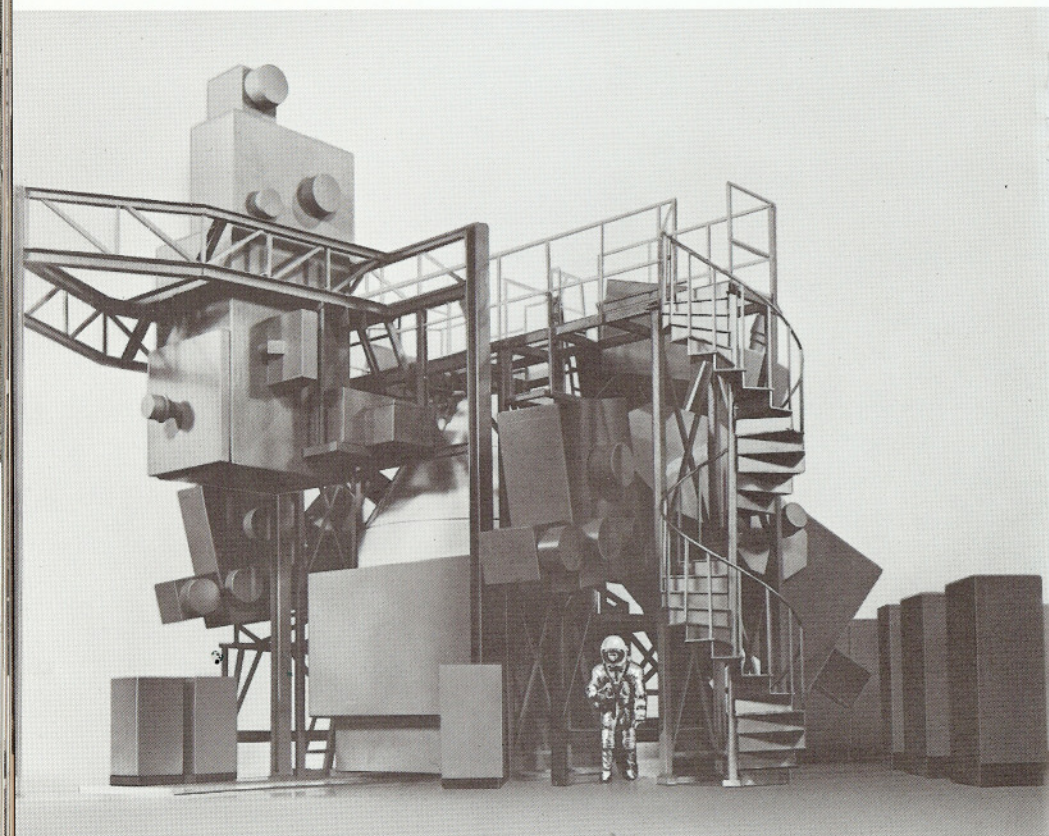
The Singer Company made a number of significant contributions to the successful flight of Apollo 9 and has established itself as a member of the aerospace team that is working with the National Aeronautics and Space Administration (NASA) to put men on the moon this year.

Singer's role is played through a number of its subsidiaries which produce equipment that varies from large sophisticated simulators for training astronauts for the Apollo flights, to small pyrogen initiators that trigger the separation of the Lunar Module from the Command/Service Module.

(Continued)



Singer Subsidiaries Support Apollo With Over 50 Products and Services



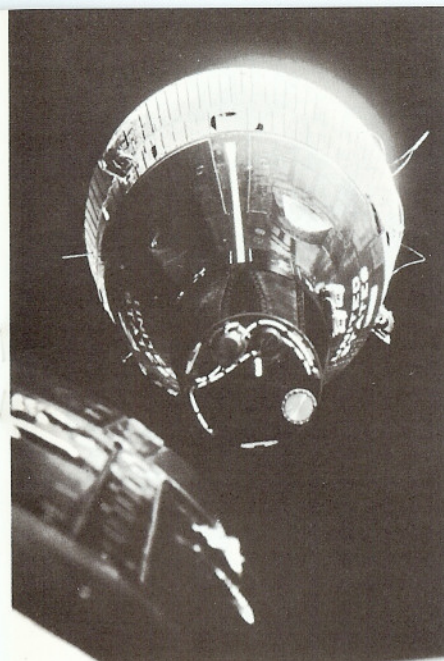
Fifteen Singer subsidiaries, which include a number of companies of General Precision Equipment Corporation, now provide over 50 different products and supporting services in many diverse areas - all aimed at the successful completion of the Apollo program.

The three astronauts, who put the Apollo 9 and Lunar Module through their paces, practiced the mission many times in highly realistic Apollo and Lunar Module simulators provided by

Singer's Link Group. In addition, Link is responsible for maintenance of the Manned Spacecraft Center's simulator complex in Houston, Texas and at Cape Kennedy, Florida.

The sextant and telescope subsystems for the Apollo Mission Simulator were designed and produced by Librascope's Optics Technology Center.

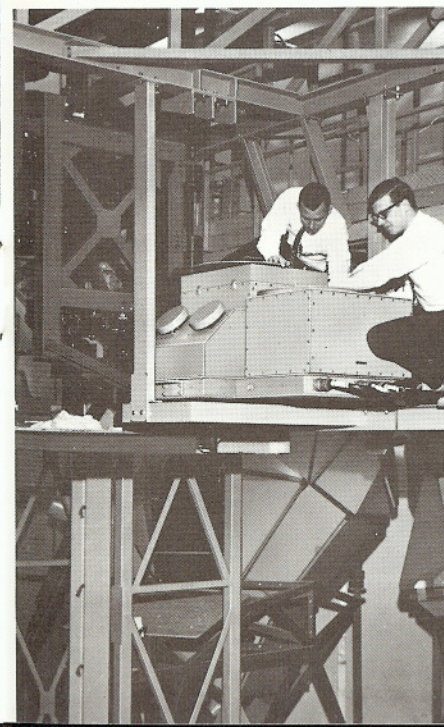
Flooding launch complex 39 with light during blast-offs of Apollo spacecraft are a battery of 50 Xenon-bulb searchlights produced by The Strong



LEFT - A scale model shows the massive-ness of the Apollo Mission Simulator, produced by Link.

ABOVE - During docking maneuvers, a Kearfott computer establishes docking pitch attitude.

BELOW - The Apollo Mission Simulator's sextant and telescope sections, produced by Librascope's Optics Technology Center, undergo checkout.



NASA Photo

Electric Corporation, another Singer company. This illumination provides lighting intensity, color definition and reliability for the complete filming of Saturn V launches. The film, in turn, aids scientists in evaluating performances of space vehicles.

Virtually all major segments of the Apollo boosters and modules contain components or systems designed and built by Singer's **Kearfott Division**. Typical of the high-precision Kearfott equipment assisting astronauts during their space journeys is electroluminescent panel instrumentation designed to meet rigid NASA requirements for lighting in a darkened space cabin. The panel glows to provide a clearly legible display.

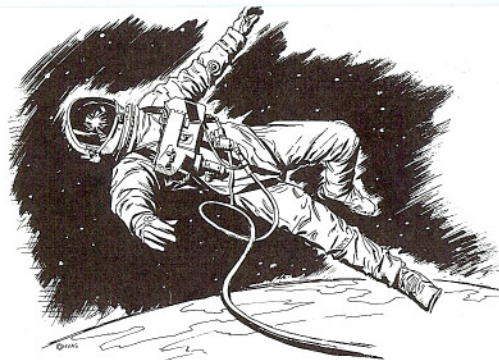


Astronauts Jim McDivitt, Dave Scott and Russell Schweickart, crew of Apollo IX.

During Apollo/LM docking maneuvers, a **Kearfott** computer establishes desired docking pitch attitude and displays to the astronauts any variation between computed reading and actual spacecraft pitch. Differences are then corrected by manually firing reaction rockets to control docking maneuvers precisely. **Kearfott** also produces displays that indicate helium temperature and pressure and propellant quantity aboard the Lunar Module during its occupancy by the two astronauts. The company's **Vap-Air Division** makes thermostats for various guidance systems.

Apollo spacecraft fuel cells, used to supply on-board power for the two-week lunar mission, are equipped with a special-purpose **Kearfott** motor driving a pump which pumps wet hydrogen for the cells.

(Continued)



Singer's Vital Role in Space

Explosive systems and electro-ordnance components used to ignite rocket motors, to separate and open protective shrouds, to cut electrical and fluid lines between modules, to split open fuel and oxygen tanks in case of mission abort and to eject the forward heat shields are all designed and built by Singer's **Link Ordnance Division**. Push-button and other types of switches are provided by **Controls Company of America**, a Singer subsidiary.

Singer equipment also makes its appearance in a number of support areas. The **Tele-Signal Division** has built communications equipment for the master communications control area and down-range locations for tracking ships, re-entry instrumentation aircraft and for both the Atlantic and Pacific ranges. **American Meter Division** provided stainless steel water meters that control and dispense de-ionized drinking water to the Lunar Module.

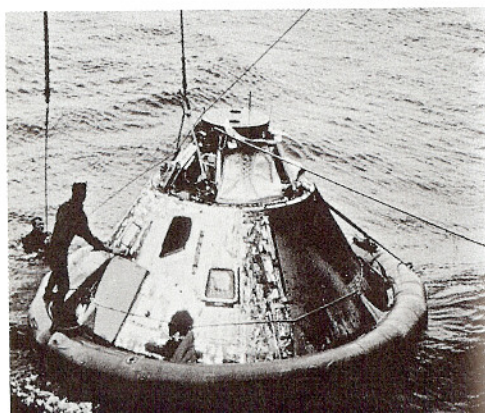
In addition, pressure and vacuum relief valves used to protect on-site fuel-storage tanks from collapse or explosion are provided by the **Industrial Controls Division**. HRB-Singer builds pulse generators that are mounted in the launch tower as part of the ground checkout system for the Saturn launch vehicle. Other electronic equipment, such as voltmeters, ratio bridges, VLF receivers, and test and calibration equipment are provided by the **Instrumentation Division** and over 170 Friden

calculating units and three automatic writing machines are used at NASA Houston Space Center. A **Friden Compu-typer** is used to prepare programs for a large space computer. **Friden's Physical Sciences Division** builds connectors used in Apollo in-flight cable equipment and in support equipment.

Another Singer division, the **Society for Visual Education, Inc.** has prepared a new series of Picture-Story Study Prints in vivid, full color covering every phase of space exploration for school children.

And interestingly enough, The Singer Company, which has evolved from a one-product consumer-oriented company to a new science-oriented manufacturer of a diversity of products, has also been called upon to apply its historic capability - **Singer sewing machines** are used to sew the space suits worn by the astronauts on the Apollo missions. □

NASA Photo



Helen Benson Ends Two Decades of Company Service

Engineering Parts Listing Supervisor Helen Benson is another of the Librascope family who is entering retirement as she leaves company service after almost 20 years service. Helen started in 1951 in parts listing and by '52 was a group leader, and since 1958 has been supervisor.



Benson

and 10 years of the company-sponsored principles of management.

Helen and Tommy Benson have two children, Jackie and Phillip, and are the proud grandparents of two. The Bensons are active in the Church of Religious Science in North Hollywood.

Off the job Helen enjoys reading and has announced her retirement plans as, "four months of traveling to the east coast and Canada in our trailer, looking up old friends, and especially touring the capitol of the United States."

"After our return I hope to enroll in some classes at the university level, and do volunteer work several days a week at the mental health clinic. I don't think we should think in terms of leisure time after retirement, but rather, more time for more rewarding activities of another sort."

'Sweet Charity' Selected For April Theater Party

The Precisioners "Theater Party" for April has been selected and the date announced, according to building representative Lisa Sands.

"Sweet Charity", starring Shirley McLaine, currently playing at the Pacific Pantages, Hollywood and Vine, in Hollywood, has been selected and the date will be Saturday, April 5. Time of the showing scheduled for the organization has been announced as 5 p.m.

Tickets may be purchased through your Precisioners building representative.

Holiday Ahead

Friday, April 4 --- Good Friday --- will be observed as a paid holiday at Librascope. Employees will not be scheduled for work on the holiday except as an emergency measure.

Cost Reductions Top Goal, Exceed \$2 Million in '68

The 1968 Cost Reduction Program goal of \$1,740,000 was exceeded by 14% according to year-end figures recently released. The final figure for the 12 month period was \$2,044,651.

"The December goal of \$145,000, which was needed to pass the \$2 million mark for the year, put us over the top," stated newly-installed CR coordinator N. J. "Jim" Cronk, Librascope controller. "December marked the seventh month that the monthly quota had been exceeded in the past eight", he said.

"All employees should feel pride in the knowledge that their efforts have been fruitful and should feel pride in an accomplishment of significant effort", Cronk concluded.

OTC Names Rollans As Finance Manager

James Rollans has assumed the position of Finance Manager at Librascope's Optics Technology Center, Rockville, Md., according to an announcement from the office of H.A. Timken, Manager of OTC.



Rollans

Rollans has been an employee of Librascope for two years. He is a recent graduate of Los Angeles Valley College where he received his B.S. degree in Business Administration, with a major in Finance. Since graduation he has continued to actively pursue course work leading to an anticipated M.S. in Industrial Management.

His earliest job assignment involved his participation in the development and implementation of management information systems. Since August of last year he had participated in a corporate-wide management development program.

CLUB NEWS

FISHING CLUB

The Fishing Club is open to all Librascope employees. Meetings are held the first Monday of each Month at 11:30 in Conference Room A, Bldg. 1. Due to the recent bad weather the Rock Cod fishing trip scheduled for March 1 was cancelled and another trip has not yet been scheduled. Future trips will be planned. For membership information call Jerry Sikora, ext. 1303

INVESTMENT CLUB

The Investment Club is open to all Librascope employees. The purpose of the club is to educate members in the fundamental principles of investing in the Stock Market. Meetings are held the 2nd and 4th Wednesday of each month in Conference Room A, Bldg. 1, at 5:00 p.m. For membership information call Joe Pardo, ext. 1436.

TOASTMASTERS

The Librascope Toastmasters Club is among the oldest of the Librascope clubs. Membership is open to all male employees of Librascope. Meetings are held twice each month. For membership information call Dan Mason, ext. 1339.

BOWLING LEAGUE

Libra-Mixed-Five Handicap (couples bowling) meet every Tuesday evening at 6:00 p.m., Grand Central Bowling Alley. This league ends April 8. The Libra-Mixed-Four Handicap (couples) Summer League begins April 29. Call Buzz Newman, ext. 1032.

Libra-Mixed Doubles will begin their Summer League sometime in April. Bowling is at 11:45 a.m. at Grand Central Bowling. Call Pat Korecky, ext. 1498 for sign-ups for Summer League.

VOLLEYBALL CLUB

Men's volleyball for all Librascope employees is played every Tuesday, 5:30 p.m. to 7:30 p.m. at McCambridge Gym, 1515 North Glenoaks, Burbank. Call Rich Portugal, ext. 1678 for further information.

SOFTBALL

Try-outs are now being conducted for the Men's Softball Club for Librascope employees. The practice rounds begin week of March 24. Call John Guarino ext. 1435 for sign-up information.

Knowles New Products Div. Quality Assurance Mgr.

Larry P. Knowles has joined Librascope's Products Division as manager of Quality Assurance.



Knowles

According to H.F. Penfold, division general manager, Knowles will be responsible for all quality assurance procedures and functions ranging from liaison with Engineering during product design stages, through test and inspection, to final delivery to the customer.

Knowles was with the Rocketdyne Division of North American Rockwell Corporation, Canoga Park, California, for six years. There, he was lead quality engineer, Quality Planning, in charge of the formation of Quality Assurance Department activities on the U.S. Navy "Condor" missile program.

Prior to his Rocketdyne affiliation, he was a publishers representative with the College Division of Charles E. Merrill Books, Inc., publishers of engineering and other physical sciences text books.

Knowles is a graduate of the University of California at Los Angeles with a Bachelor's degree in Applied Mathematics and a minor in Mechanical Engineering. He is a member of the American Society of Tool and Manufacturing Engineers and the National Management Association.

He, his wife, Sandra Mary, and their son Bradley and daughter Kathleen Ann, live in Canoga Park.

New Ski Club Organized; Schedules Films, Ski Trips

Members of Librascope's new Ski Club will make at least one weekend ski trip a month as long as the snow holds out, according to Don Barton, spokesman for the club.

Open to all Librascope employees, families and friends, the Ski Club, (sponsored by the Precisioners), meets once each month in the Conference Dining Room, Bldg. 3, at 7:30 p.m. Ski films are shown at each meeting.

For membership or ski-trip information, call Don Barton, extension 1572.

Credit Union Savings And Loans Up - Delinquency Down

The annual meeting of the Librascope Employees Credit Union was held January 29 at 4 p.m. under the direction of club president Buzz Newman. Forty-six credit union members were in attendance.

Reports given by club officers showed a substantial increase in club activities both in savings and loans.

Share savings per account showed an increase of \$63, up 11.5% over 1967. For the same period loans increased by \$50 or 9.5%. At the end of the year total shares and loans both amounted to \$1.05 million. Delinquent loans averaged 1% of the total loans during the year and at year's end showed a figure of .7%.

Gross income averaged \$8.8 thousand per month of which 41% was directly returned to the membership in the form of a 5% dividend payable at the end of June and December. An additional 22% accrued indirectly to the membership in the reserve fund (12%) and premiums on life savings and loan protection insurance policies.

President Newman stated that even though credit union members could point with pride to sound financial management, they could not avoid the fact that during the year they had failed to provide credit union support to a large segment of the Librascope family. He stressed that credit union membership is open to all members of each employee's family, and added that a special invitation was extended to the young people.

"We promise that 1969 will witness a concerted effort to bring the credit union story to a significant number of employees who are not now members," President Newman said.

During the elections three new names were added to the list of credit union officers, Margaret Terrill of 21-391, Technical Support joined the Board of Directors; Ora Lee Price of Assembly became a credit committee member and Carl Culver, expediting supervisor, will add his talents to the supervisory committee.

Drawings were held for door prizes at the meeting which included two tickets for the credit union conference to be held at the Biltmore Hotel in April, a beautiful bud vase, hand-fashioned by board member Vern Mesick's daughter, Sandra, and a variety of pen holders and "power flowers" contributed by the Librascope-sponsored Junior Achievement group.



TV SPECIAL - The highly-acclaimed hour-long color television special, "SINGER presents Hawaii-Ho!" starring Hawaiian entertainer Don Ho, will be repeated on Monday, April 21, on NBC-TV, from 8-9 p.m. EST (7-8 p.m. CST, 8-9 p.m. PST and 9-10 p.m. MST).

The TV special will be the highlight of a unique Singer sales event called a "Monster Sale," running from April 13 through May 10. At that time, Singer Centers throughout the country will feature a safari theme - a big game hunt - during which there will be "Monster" sales on every single SINGER product line in the store.

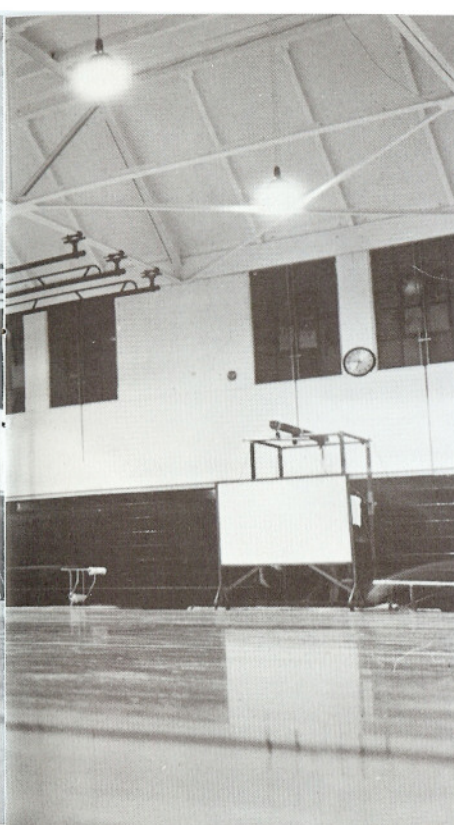
Cookies - And Other Goodies Earmarked For Viet Nam

All employees of Librascope are invited to participate in the up-coming Precisioners cookie drive - an event to show our appreciation to the men fighting in the Vietnam war zone.

Mrs. Donna L. Williams, chairman and Bldg. 3 representative, will coordinate the effort which will assure that employees on military leave, and also sons, daughters and husbands of employees, are contacted at least every other month with packages of cookies, books, copies of Librazette, letters, and other items they feel will interest these men and show our support of them.

It is hoped by the committee that addresses of all men now in the war zones can be obtained by April 15. All employees interested in joining this effort are invited to bake or buy cookies on their own time. The packaging will be taken care of by the Precisioners and the postage will be paid for out of the Precisioners budget.

Further details will be announced at a later date.



At press time word has been received that the Precisioneers were first-round winners in their game against BRAC in the Southern California Industrial Basketball League playoffs. The score, at Burroughs High School, was 60-58, in overtime.

Center jump starts recent game against Hydraulic Research. Precisioneers had relatively easy time winning 72-50.

Photos by Arthur Adams and Jim Avera

CAGERS IN HIGH GEAR

Coming off a perfect 7-0 record the Precisioneers basketball team roared into the Southern California Industrial Basketball tournament after winning the second half of the Burbank Industrial "B" league. Their first game was scheduled for Friday, March 14.

During the first half of the league schedule the team got off to a rather slow start, due mainly to injuries and the flu.

But the second half was a different story.

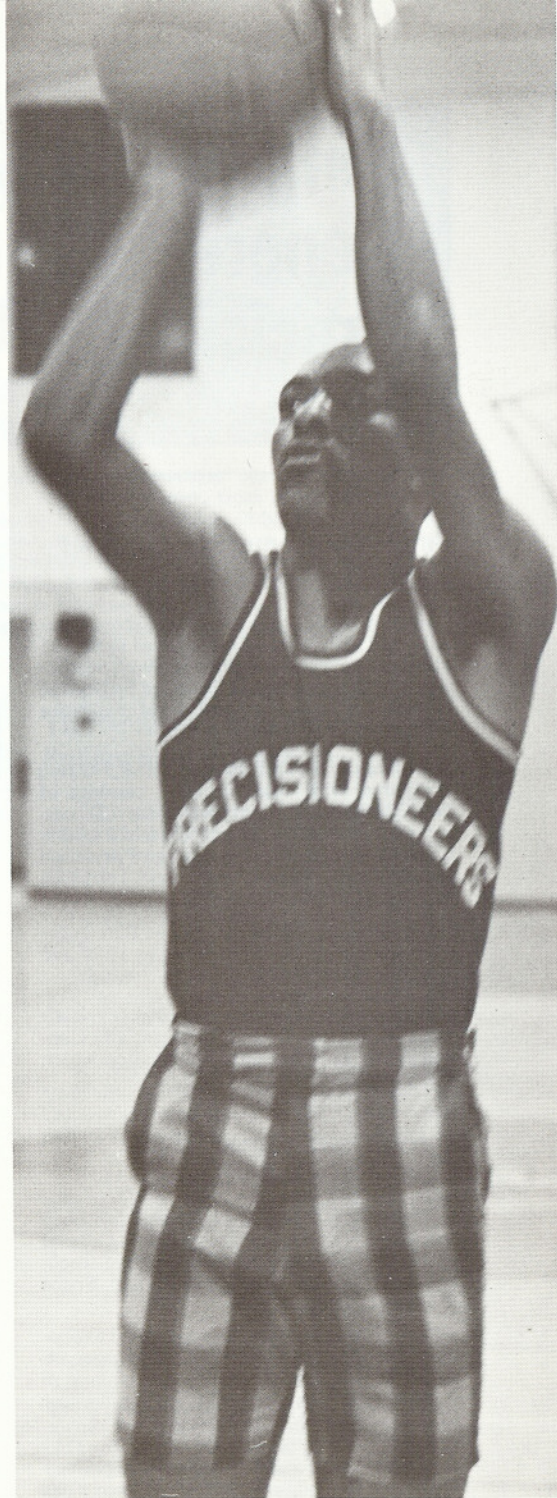
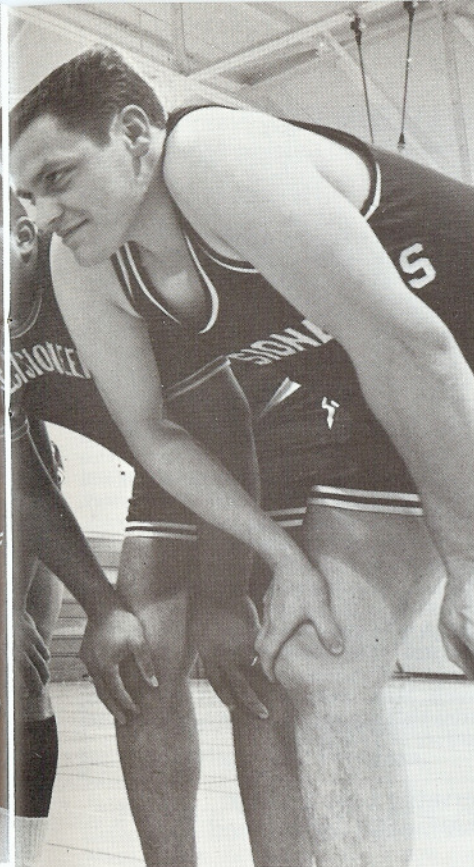
During their seven-game streak the Precisioneers handily defeated the previously unbeaten Telco team 56-47 and then defeated league-leading Burbank Post Office 73-56.

(Continued)





Squad gets ready for a Thursday night game in Burbank Industrial Basketball League. Locker room shot shows Dick Kemner, knecht, Bob Moody, Jim Young and Tom Hite almost ready.



A Fast, Well-Balanced Team

Ed Williams, Bob Moody, Rex Fries, Jim Young, Dick Kennerknecht, Jack La Mountain, Charlie Hicks and Tom Hite comprise the eight-man squad. Kennerknecht does double duty as the squad's coach.

The team is well balanced, exceptionally fast with average height and exceptional outside shooting. The teams leading scorers have been Bob Moody and Ed Williams, with Rex Fries coming on fast during the second half to add to the potent scoring attack.

On February 18th the team played probably their best game of the season defeating the unbeaten Telco team by

a score of 56-47. Williams and Moody each picked up 18 points in this win.

The following game was an easy 72-50 win against Hydraulic Research. The following week the Precisioneers took the court against the league-leading Burbank P.O. five and had an excellent team performance with five players scoring in double figures.

With Jim Young, Bob Moody and Ed Williams controlling both boards the team came from a 51-47 third-period deficit to romp to an easy 73-56 win. The leading scores in that game were Dick Kennerknecht with 21 points and Ed Williams adding 19. □

Coach Kennerknecht, kneeling, gives last-minute instructions to Bob Moody, Jim Young, Charlie Hicks, Ed Williams, Tom Hite and Rex Fries. Whatever he told them worked — team won their seventh straight in Burbank league. Not shown; team member Jack La Mountain.

Team scoring leader Ed Williams casts off from the free throw line on way to another productive evening. Bob Moody and Rex Fries also help carry scoring load.

Singer- General Precision Notes

Singer Company Reports Good Sales Increase For 1967

NEW YORK — Sales of The Singer Company in 1968 increased ten percent to \$1.755 billion from \$1.595 billion in 1967, according to preliminary figures disclosed by Donald P. Kircher, president and chief executive officer.

Earnings for the full year were \$69,392,000 compared with restated 1967 earnings of \$63,702,000. Earnings per share of common stock were \$4.53 in 1968 and \$4.20 in 1967. Assuming full conversion of preferred stock, earnings per share would be \$4.26 for 1968 compared with \$3.95 in 1967.

There was an average of 13,791,000 shares of common stock outstanding in 1968 and 13,513,000 in 1967.

Sales and net income results for both years reflect the merger of Singer and General Precision Equipment Corporation which was completed July 11, 1968.

R.N. Brown Named DSSG Chief Technical Officer

New York - Robert N. Brown has been named a vice president of Singer-General Precision, Inc., and appointed Chief Technical Officer of the Defense and Space Systems Group.

Prior to this promotion, Brown was executive vice president and general manager of Kearfott.

According to Dr. Donal B. Duncan, group vice president for the Defense and Space Systems Group, "Brown will be responsible for insuring the excellence of our technical effort and for long range planning."

Controls Company Names Automotive Division Mgr.

Melrose Park, Ill. — Controls Company of America has named Eugene D. Scalera general manager of its Appliance and Automotive Division, it was announced by Donald M. Strathearn, president of Controls Company.



Scalera

Scalera, formerly director of manufacturing for the Appliance and Automotive Division, succeeds Frank Breckenridge who was promoted to the newly-created position of senior vice president-marketing and planning of the company.

Scalera joined Controls Company in 1965 after four years of service with International Telephone and Telegraph's Wire and Cable Division as manager of manufacturing and manager of engineering. Prior to that he was associated with General Electric becoming manager of manufacturing engineering at Lowell, Mass., and manager of its Thermo-setting Unit. He is a graduate of Massachusetts Institute of Technology.

Versatile Low Voltage Thermostat Introduced

Milwaukee, Wis. — A versatile new low voltage thermostat designed to automatically control residential-type oil, gas, or electric heating, cooling or combination of heating and cooling has been introduced by Controls Company of America.

The thermostat features either adjustable or field replaceable fixed heat anticipation and has an adjustment range of 50°F. to 90°F. Smartly styled to complement any decor, the temperature indicators are easy to read, and the fingertip selector permits fast and accurate temperature selection. The unit mounts directly to the wall, thus eliminating mounting brackets.

EMC Operations Moves To Los Angeles Facility

Los Angeles - The Instrumentation Division's EMC Operation has moved to new facilities at 3211 So. LaCienega Blvd., according to a recent announcement by Delbert Hish, manager of EMC.

Developers and manufacturers of Boise and Field Intensity Analyzer Systems, EMC formerly occupied a plant in North Hollywood.



NEW PRECISIONEERS — Officers and building representatives elected to serve the Precisioneers during 1969 gather for a formal picture. Top row, from left, Charlie Ha'o, director-at-large; Lisa Sands, Bldg. 3 representative; Ora Lee Price, Bldg. 17; Doris Perry, Bldg. 15; Betty Cardona, Bldg. 16; Jeri Tichenor, Bldg. 2; Margaret Brown, Bldg. 16; Joanne Keithley, Bldg. 2; Ellen McKeon, Bldg. 1; Lois Benjamin, Bldg. 1 (Nights); Jayne Stanek, secretary, and Elsie Stefurak, Bldg. 1. Left to right, bottom row: Jack Naimoli, Bldg. 17; Pat Hansen, treasurer; Fred Killips, Bldg. 17; Donna Williams, Bldg. 3; Paul Lough, president; Bobbie Barnard, Bldg. 18, and Jim Avera, vice president. Not shown: Earle Tempesta, Bldg. 1 (Nights), and Kay Small, Bldg. 17.

New Awards, Contest Highlight ZD Program

The year is off to a fast start for Zero Defects committee members with new awards, a new ZD contest and a new name for the Roadblock Removal portion of the program.

"We have established a new name — RR/Improved Action — for Roadblock Removal," said Jerry Beushausen, manager of Contracts and Chairman of the 1969 ZD Executive Committee. "We feel this new name is more appropriate and in addition, expands the scope of the program."

Among the new awards this year are expense-paid weekend vacation trips for monthly RR/Improved Action winners. A special contest also is planned — with valuable merchandise prizes — and details will be announced soon.

Serving with Beushausen on the 1969 committee are:

RR/Improved Action Committee: Jack Phillips, chairman, Larry Cahill, Charlie Cole, Jim Gilliam and Bill Kerr.

Goal Group Evaluation: Bob Laperle, chairman, Fred Beindorff, Fritz Held, Bob Hill and Champ Vance.

Cost Reduction Committee: Buzz Newman, chairman.

Communications & Awards: Jim Norwood, chairman, John Erickson and Jayne Stanek.

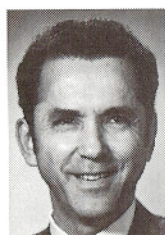
Traffic Safety Tips on Pulling Boat Trailers

"The combination of automobile, boat trailer and boat is perhaps twice as heavy, twice as long and certainly at least twice as difficult to maneuver as an automobile alone," says Harry Porter, manager of the National Safety Council's Traffic Department.

Porter makes the following suggestions to help make things easier—and safer—for drivers pulling boat trailers:

- Always start slowly, apply power gradually. Observe posted speed limits. In California, top speed is 55 mph when pulling a trailer.
- If you must pass, remember that your passing zip is nearly all gone. And, being twice as long, you'll need twice the space to get back in line. Your car should be equipped with two outside mirrors to help you check your position at all times.
- Allow plenty of extra space for stopping, and when turning a corner, swing as wide as you safely can to allow the trailer to clear.
- Practice is the key to successful backing. Go slowly and don't oversteer. You can't recover if you go too far.

LIBRAVETS



Eloy A. Barrios
20 yrs.—Dec. 2



Walter D. Newcomer, Jr.
20 yrs.—Feb. 15



Paul Porco
20 yrs.—Feb. 18



James L. Cass
15 yrs.—Jan. 11



Violet B. Ferman
10 yrs.—Feb. 23



Mamie N. Fickler
10 yrs.—Nov. 11



Joe Fido
10 yrs.—Feb. 6



Ernest W. Fitzgerald
10 yrs.—Dec. 22



Lois V. Freeman
15 yrs.—Nov. 9



Iva M. Stewart
15 yrs.—Nov. 4



Arthur A. Olsen
15 yrs.—Dec. 7



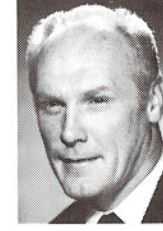
Bert L. Younger
10 yrs.—Feb. 9



Charles B. Ha'o
10 yrs.—Jan. 5



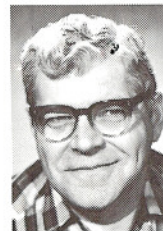
Richard N. Kennerknecht
10 yrs.—Feb. 10



William O. Kerr
10 yrs.—Nov. 3



Harry M. Langowski
10 yrs.—Feb. 23



Duwayne H. Adamson
10 yrs.—Feb. 2



John T. Brower
10 yrs.—Feb. 23



Ruby Burrow
10 yrs.—Feb. 13



Lois P. Cain
10 yrs.—Nov. 11



Margaret M. Manley
10 yrs.—Nov. 3



La Vetta Norregaard
10 yrs.—Nov. 11



Patricia D. Paddock
10 yrs.—Feb. 16



Bruce Perkin
10 yrs.—Nov. 17



Joseph Cannata
10 yrs.—Nov. 4



Donald L. Cowen
10 yrs.—Nov. 17



Nellie F. Ercanbrack
10 yrs.—Nov. 17



Richard M. Fallis
10 yrs.—Jan. 12



James A. Phillips
10 yrs.—Feb. 18



Juanita M. Rainwater
10 yrs.—Feb. 18



Albert R. Sugimoto
10 yrs.—Nov. 25



Eugene B. Thomson
10 yrs.—Nov. 3



Hazel J. Weeks
5 yrs.—Nov. 26



Kathleen E. Burnett
5 yrs.—Feb. 19



Chai B. Byun
5 yrs.—Jan. 2



Lee C. Heighe
5 yrs.—Feb. 18



Helen R. Karbaj
5 yrs.—Nov. 26



Peter D. Laue
5 yrs.—Dec. 16



Nettie E. Stone
5 yrs.—Jan. 6



William J. Szombathy
5 yrs.—Feb. 13



Voldamars Upenieks
5 yrs.—Jan. 27

NOT PICTURED:

Joseph A. Pardo, Jr.
15 yrs.—Jan. 27

Cora B. Cox
10 yrs.—Nov. 18

Josef Dugas
10 yrs.—Jan. 19

Madelynn L. Fredsti
10 yrs.—Nov. 3

Betty Gerlach
10 yrs.—Feb. 23

Violet A. Stearley
10 yrs.—Nov. 24

Charlotte G. Webberson
10 yrs.—Feb. 24

Nolan R. Kroninger
5 yrs.—Dec. 16

J. S. Rosenfield
5 yrs.—Jan. 27

Robert F. Sebesta
5 yrs.—Nov. 18

Golf Club Elects Officers, Plans Kickoff Tourney

Elected to serve as officers in the Precisioners Golf Club for 1969 are Mark Ferry, president; Dick Regan, vice president, and Bob McFarlin, secretary-treasurer.

Golf Club membership is open to all Librascope employees, and all golfers interested in participating in league play (April through September) are encouraged to sign up now.

In league play, each member plays 10 matches (handicap) against opponents of comparable capabilities. First and second place winners in each flight receive trophies at the annual tournament banquet.

The Kickoff Tournament this year will be Friday, April 4 (Good Friday), at the Ontario National Golf Course (formerly Whispering Lakes) in Ontario, California. Persons interested in tournament play should contact their Golf Club building representative. Names of building reps are listed in company bulletin boards.

The Last Page

Surplus Lighters and Ballpoint Pens for Sale

The Public Relations Department announced this week that leftover cigarette lighters and ballpoint pens (engraved with the old General Precision Systems, Inc., Librascope Group symbol) will be available for sale to employees.

"As a result of the recent changeover to the new Singer-Librascope logo, we have a few lighters and pens with the old GP Symbol which have been declared surplus, and thus are for sale at below cost," said Earl Erickson, manager of Public Relations and Advertising.

The lighters, Zippo slimline models, are \$1.50 each. The ballpoint pens, made by Eversharp, are 25¢ each.

Erickson emphasized that quantities are limited and that sales will be made on a first-come, first-served basis. Sale items are available at the Public Relations office, Bldg. 3.

Coming Events

Precisioners coming events, announced but without finalized details, are drawn to your attention, with the suggestion that you watch for further details on bulletin boards.

May 1 will feature a bus and dinner trip to the world-famous production of the Ice Capades. May 2 will feature the Spring Drawing.

May 23, 24 and 25 have been selected as the days for the Las Vegas weekend bus trip. These and other events will be explained in greater detail on bulletin boards around the plant.

Laue Addresses AIIE Meeting

Peter D. Laue, senior industrial engineer, Systems Division Operations, was the speaker at the monthly meeting of the American Institute of Industrial Engineers, held February 11, in Los Angeles.

Laue discussed the EDP system of on-line, real-time operating information and performance reporting.

Secretaries Week in April

The last full week in April has been designated as Secretaries Week, and Wednesday of that week, April 23, is Secretaries Day, according to the National Secretaries Association.

This is the time of year, says the NSA, when many bosses give special recognition to their secretaries. After all, secretaries are efficient and trustworthy, and in their quiet, unobtrusive way, keep the wheels of progress and affairs of the office running smoothly.

So, join the many bosses of the nation in this once-a-year special recognition. You might bring your secretary a corsage, take her to lunch some time during Secretaries Week, or just take time to tell her how much her efforts are appreciated.

Easter Week at Disneyland

Spectacular Easter Week entertainment kicks off an event-packed month of April at Disneyland.

In addition to the annual Disneyland Easter Parade with flower-decorated antique cars and Easter fashions, entertainment will include daily character parades, star-name shows and dancing every night.

Beginning March 30 through Easter Week, Disneyland will be open every day from 8 a.m. to midnight.

Young car thieves need your help.

DON'T GIVE IT TO THEM.

**LOCK YOUR CAR.
TAKE YOUR KEYS.**



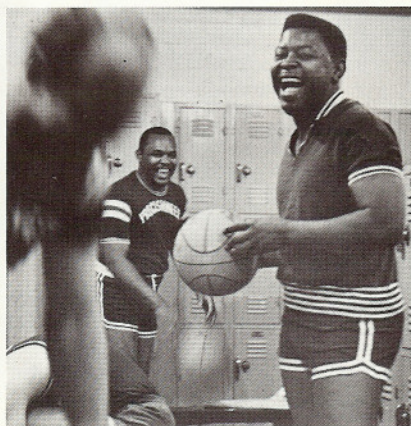
advertising contributed for the public good



Apollo : How did Singer contribute ? Page 20



IN THIS ISSUE



Cagers in high gear . . . Page 28



Power Flower . . . Page 14