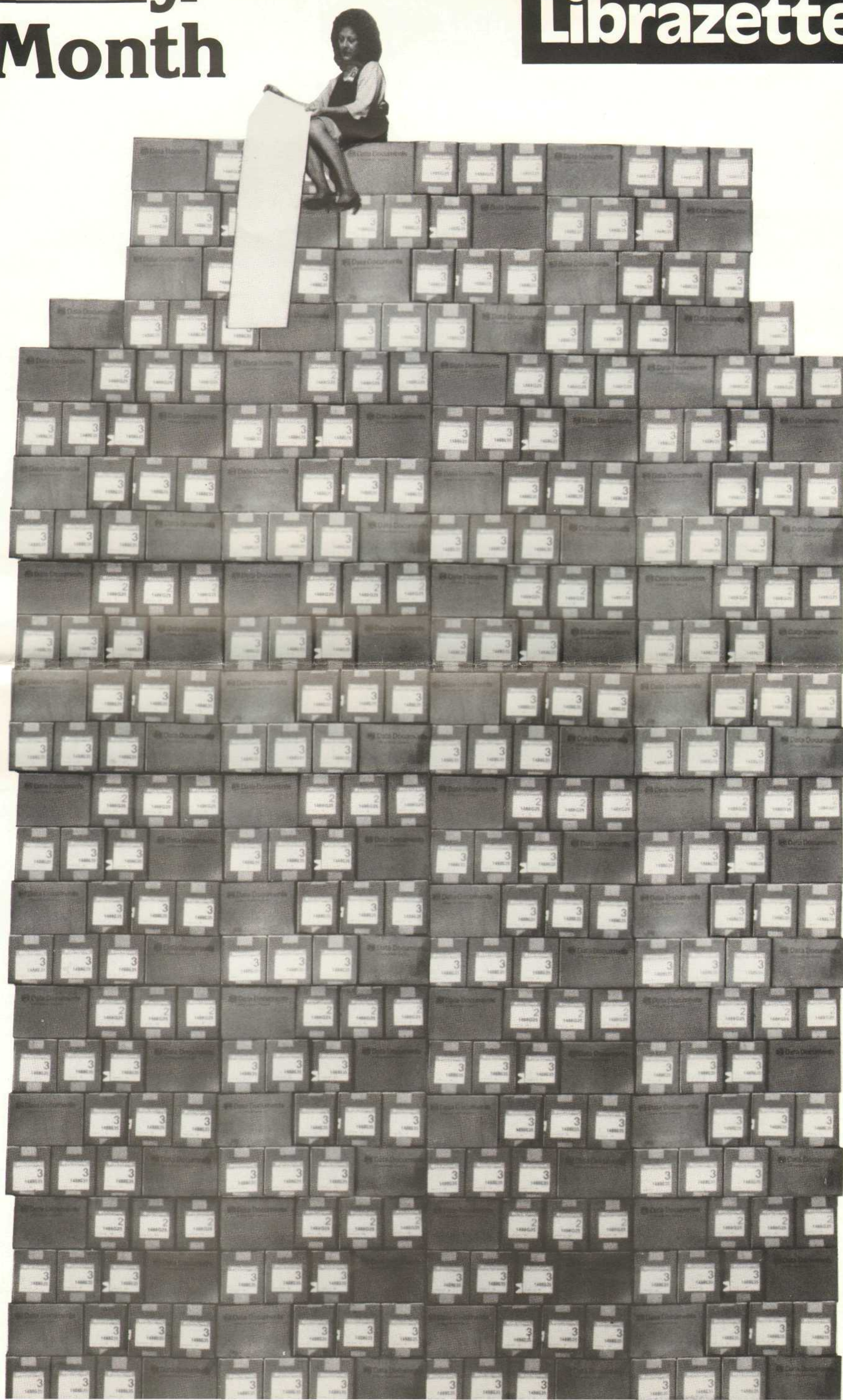


# Every Month

Feb., 1984

# Librazette





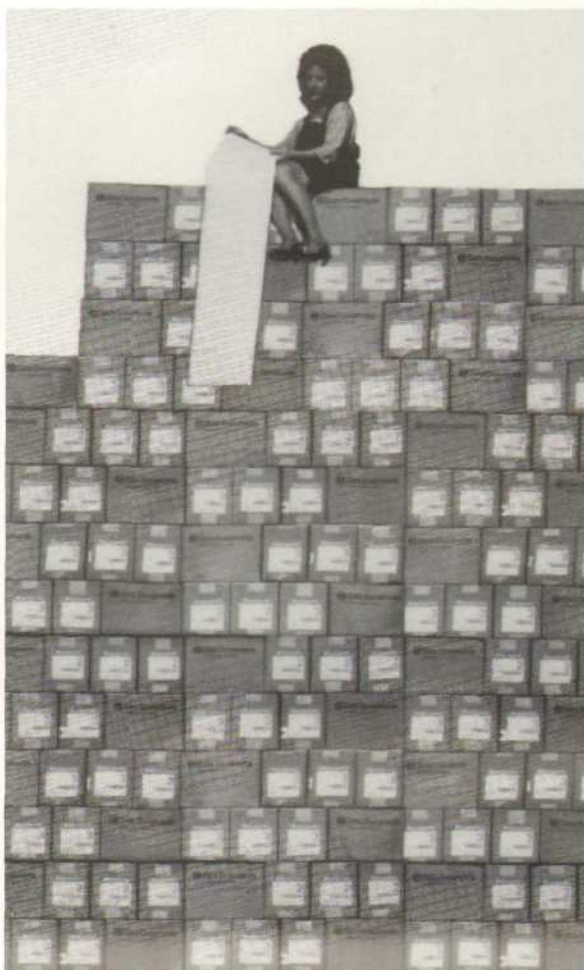
# News, events and other interesting things . . .

## Every Month . . .

The 370 cartons in the picture on the front cover represents the amount of paper used each month by the Company's two main computers, the Data General MV8000 and the Data General M600.

Maurice Center stated, "My main concern is neither the \$85,000 we spend on paper each year, nor the number of people and the amount of equipment it takes to prepare and distribute this mountain of paper. I am very concerned that the various people who use these reports may not get the information they require to control their activities."

"During the month of February all reports from our two main computers will be distributed directly to the department heads involved. This will give them an opportunity to see the volume of paper used by their own departments and to determine the suitability of the information."



## Cash Awards For Employee Referrals

Employees can now receive up to \$1,250 for referring new employees to Librascope. The amount of the award is based on the particular job classification filled by a referral; e.g., \$1,250 is currently being offered for the referral and hiring of Staff Engineers. (All awards are subject to withholding taxes.)

Some of the employees who have recently received cash awards for employee referrals and hirings include: Jeanette McGreevy, \$750. for a Technical Programmer; Steven Papkey, \$250. for a Combat Systems Analyst; Jimmy Smith, \$1,250. for a Staff Engineer; Brenda Jones, \$50. for a Parts Lister; William Day, \$300. for an Engineering Writer; Kevin Tirko, \$1,250. for an Engineer; Chien Lee, \$300. for an ATE Applications Engineer; Elliott Malet, \$50. for a Manufacturing Customer Service Coordinator; George Flynn, \$100. for a Standards Analyst Trainee; and Carol Goldthwaite, \$100. for a Secretary.

"We have immediate openings for Test Equipment Engineers, Technical Programmers, Circuit Designers, Micro-Processor Engineers, Applications Engineers, and manufacturing support types," said Rusty Dunham, Manager, Employment.

Current job openings and their respective cash awards are listed on bulletin boards throughout the plant. For more information, contact the Employment Office, X-1204.

## ESP Bonus Winners



Bonus awards totalling \$1,000 were presented to 14 employees for outstanding suggestions during 1983. Nine of the 14 recipients are pictured above. Receiving their awards: Front row, from left — Donald Mann, Cora Cox, Ricardo Barreiro, Phil Friedemann, Richard Johnson, Gladys Kaiser and James Hammer. Back row, fourth from left — Frances Radunz, and Richard Skaggs, second from right. Other bonus winners not pictured include: Richard Bell, Rick Caputo, Helmut Roggenbach, Joseph Vass, and Pete Thompson.

Members of Librascope's Employee Suggestion Committee pictured include: Back row, center, Carl Culver; Nick Costantini, fourth from right; and Marion Daggett, program administrator, extreme right. Not pictured is committeeman Duane Vennes.

The Operations Improvement Committee members who review all Operations Department suggestions are: Back row, from left,

Dwight James, Ruby Goodrich, Herb Meyer, Jim Gilliam, Phil Toorvald and Dee Gustafson.

Two of the top suggestions for 1983 included a submittal by Phil Friedemann for the design of a 'flaring and assembling' tool to be used for the removal and/or installation of cable retainer clips on a SST plasma panel. This new tool will allow for in-house repair or replacement of cables to the panel, resulting in a cost savings and improved efficiency, production and material handling.

Ricardo Barreiro also submitted a 'bonus' suggestion which has resulted in bus bar and harness modifications during the assembly of the Weapon Launch Console MK 96. Barreiro's suggestion has resulted in a savings of potential rework time and has facilitated an assembly procedure on the MK 96.

## Security Guard Wins Medal



Security Manager, Herb Bock, presents an Expert Pistol Shot medal to Officer Sharon Alonzo who earned the award at a recent firearms qualification session conducted by the Security Department at the Pasadena Police Firearms Training Facility.

In qualifying for the medal, Officer Alonzo fired the highest score out of 18 participating officers assigned to Librascope by California Plant Protection, Inc.

Librascope requires that all security officers assigned to the Company must requalify quarterly for firearms.



## Librascope Tradition . . . Helping Others



Members of the Glendale Self Aid Workshop are shown holding an enlarged check they received from Librascope employees. The check, totaling \$10,000, represents donations from employees during the Holiday Charity

workshop, which is sponsored by The Glendale Association for the Retarded, is a sheltered work environment for the mentally retarded, offering an opportunity to do productive jobs contracted to the workshop by business and industry.

"I have been sitting at my typewriter trying to think of a more eloquent word to express our appreciation for your donation," wrote Carole Jouroyan, Executive Director of the Workshop, "But, all I can think of is THANK YOU . . . THANK YOU . . . THANK YOU! Our best wishes to each of you for a happy, healthy and peaceful 1984 . . . you are very special to us!"

## FICA—SDI Tax Bite Got Bigger

Tax bases for both FICA (Social Security) and SDI (State Disability Insurance) have increased for 1984. In addition, the tax rate for SDI has also increased.

Barbara Parker, supervisor, Payroll, said that the new rate and bases were reflected in the first checks issued to employees in January.

The FICA taxable wage base for 1984 is \$37,800, an increase of \$2,100 over the 1983 base of \$35,700. Tax rates for an employee's wages for 1984 will be 6.7% for the employee and 7% for the employer.

Accordingly, the maximum amount of social security tax payable by an employee in 1984 is \$2,532.60. The maximum tax payable by an employer on one employee's wages is \$2,646. This amounts to an increase over 1983 maximums of \$140.70 for employees and \$254.10 for employers.

For SDI purposes, in 1984 the new tax basis is \$21,900. This represents a \$4,900 increase from the 1983 base of \$17,000. The new SDI rate is .9% as compared to .8% for 1983. The maximum amount of SDI tax payable by an employee is \$197.10. This is \$61.10 more than the \$136 maximum paid in 1983.

Payroll advises all employees to review their current tax withholding exemption status and to submit a new W-4 form to Payroll if necessary.

## Club Corner

**AMATEUR RADIO CLUB** — Meetings are held the first Tuesday of every month during lunch in Bldg. 17. The club provides test equipment and radio equipment for member's use. Classes are held for anyone interested in obtaining an amateur radio license. For membership information, call Maurice DeLongfield, X-1085.

**BIBLE CLUB** — There are several Bible Clubs active at Librascope; one meets every Tuesday in Bldg. 17 at 11:30 (call Bob Geno, X-1214), and meetings are held every Wednesday in the Publications Conference Room, Bldg. 2, beginning at 11:45 (call Bill Van Antwerp, X-1447).

**CAMERA CLUB** — Meets the 2nd and 4th Tuesday of every month at 11:45 am in Bldg. 2, Publications Conference Room. The club provides an active program for beginning photographers. Field trips are held as well as after-work shooting sessions. An exhibit of the club's current work is on display in Jack Bamberger's office, Bldg. 2. For more information, call Dom Venari, X-1815.

**HUNTING CLUB** — Meets the 1st Thursday of every month, in the evening, at club member's homes. For membership information, call Michael Cooper, X-1435.

## Wheelchair No Obstacle



After completing two years at Los Angeles City College, John Yasuda was hired by Librascope as a component technician. John is one of many LACC graduates who have found employment at Librascope. What makes his story different is that John has cerebral palsy, which has weakened his body and kept him in a wheelchair most of his life.

"In high school I had friends who were disabled," said John. "They were worried and afraid they couldn't make it. But I told myself, I might as well see what I can do and not what I can't do."

Choosing as his goal the two year AA degree electronics program, John was required to do everything the other students did.

"We're very pleased with John's work," said John's supervisor, Bob Sharp. At Librascope, special arrangements have been made to accommodate John's disability as well as for other handicapped employees, including a special handicapped parking area, access ramps in and out of buildings, and special restroom facilities.

Asked about his goals, John said, "I want to gain enough experience so that if I want to go back to school to get an advanced degree, I can. My immediate goal is to become totally self sufficient."

## Smokers Clinic Set

A 5-day clinic to help smokers quit the habit will be held at Librascope starting Monday, March 12. The session will be held Monday through Friday in the Conference Training Room, Bldg. 2, from 4 to 5:30 pm.

Conducted by the Glendale Conference of Seventh-Day Adventists, the program includes scientifically conducted group therapy and boasts one of the highest success rates for helping those who want to quit smoking.

The cost is \$5 per person. Employee's family members are welcome to enroll. Call the Employee Service Office, X-1210.

## The Breakfast Myth

When it's a choice between junk food in the a.m., the nod to nothing, according to THE LINK, a publication of the Whirlpool Corporation of Clyde, Ohio. Recent article in THE LINK says that it is better to eat nothing at all for breakfast than to eat a sugar-coated doughnut or give yourself an early morning jolt with a cup of coffee. Caffeine may get your engines fired up, but they will make you jittery later. In fact, you're better off running on empty.

When you arise in the morning, your body is humming along on a fast. This is called a "fasting metabolism." The body, deprived of food overnight, is using stored fat for

energy. Your blood sugar level may be relatively low, but it is stable.

According to Samuel J. Arnold, M.D., a doctor from Morristown, New Jersey who has had a long-standing interest in the effects of breakfast on the human body, "someone who wakes up in the morning on a fasting metabolism should feel pretty good. But when they eat sugar or starch for breakfast, their blood sugar level rises quickly. The body then responds by pouring insulin into the blood. That drops the blood sugar level like crazy. It will actually be lower than when they woke up. And a rapidly changing blood sugar level can scramble their reasoning facul-

ties and roller coaster their emotions.

Dr. Arnold contends, "If you can't eat something good, you shouldn't eat anything at all. If you're in a hurry, or you're not hungry, skip breakfast. But later in the morning, take some sort of breakfast break."

The key to keeping your morning blood sugar level at a decent height is to include protein in your a.m. diet. Protein in the morning raises your blood sugar level in a calm, controlled way, which will preserve a steady state of mind. Studies show that when you eat a high-protein breakfast, your morning work performance improves considerably.

## Librascope Golf Club—1984

The Librascope Golf Club has announced the following new officers and schedule of tournaments for 1984. President, Keith Weideman; Vice President/Tournament Chairman, Bill Chandler; Secretary/Treasurer, Bill Girouard; Handicap Chairman, Gerry McDuffey; Flight Play Chairman, Randy Kupres; Membership Chairman, Jerry Smith; Entertainment Chairman, David Gould; and Rules Chairman, Frank Copple.

Employees who would like to join the club may obtain membership applications from the following building representatives: Building 1 - Jose Feliciano; Buildings 2 & 6 - Bob Maas; Buildings 3, 5, & 7 - Steve Wallace; and Buildings 8, 17 & 18 - Howard Miller.

Schedule of tournaments:

3/10	Azusa Greens Country Club, Azusa
4/20	Camarillo Springs, Camarillo
5/5	Tropicana Country Club, Las Vegas
6/30	Los Serranos, Chino
7/28	Elkins Ranch, Fillmore
8/11-12	Stardust Country Club, San Diego
9/15	Kearfott Tournament (TBA)
10/21	Brookside, Pasadena



# Libravets



Carl Culver  
35 Years  
Operations



Eloy Barrios  
35 Years  
Government Property  
Administration



Howard Miller  
30 Years  
Stores



Iva Stewart  
30 Years  
Manufacturing  
Engineering



Art Olson  
30 Years  
Manufacturing  
Engineering



Dixie Robertson  
25 Years  
Adjusting Magnetics



Fritz Held  
25 Years  
Naval Weapons  
Systems Engineering



Harry Pace  
25 Years  
Plant Engineering



Burdette Curtis  
25 Years  
Adjusting Magnetics



Mertin Wandrey  
25 Years  
Quality Assurance  
Inspection



Bernard Battistessa  
25 Years  
Model Shop



John Mandala  
25 Years  
Scheduling &  
Records Cont.



Ray Youniacutt  
25 Years  
Machining



Norman Boase  
25 Years  
Peripheral Prod.  
Design



Charles Rooks  
25 Years  
Logic Design



George Webb  
25 Years  
Manufacturing  
Engineering



Malinda Boyd  
25 Years  
Manufacturing  
Engineering



Robert Douglas  
25 Years  
Logic Design



Harry Milem  
25 Years  
Stores



Bruce Perkin  
25 Years  
Electronic Design



Cora Cox  
25 Years  
Manufacturing  
Engineering



Charlie Ha'o  
25 Years  
Printed Circuit  
Design

Not Pictured:  
25 Years — Joseph Pardo  
Richard Fallis

## retirements



LILIANE BUTEAU, 24 years, Machining, with Supvr., Carl Frain.



LOIS CANSLER (left), 32 years, and LILLIAN HOUCHIN (right), 25 years, both of Scheduling & Records Control, with Supvr., Helen Perez.



ART LEVINE (second from left), 25 years, Product Design, with (from left) Supvr., Bill Holcomb, Donna Fekety and Laura Flynn.



JOHN PAUL JONES, 24 years, Field Service, with (from left), Glenda Bacon, Jill Amidon, Jean Hart and Lila Reynolds.