

December, 1985

Librazette

Happy Holidays

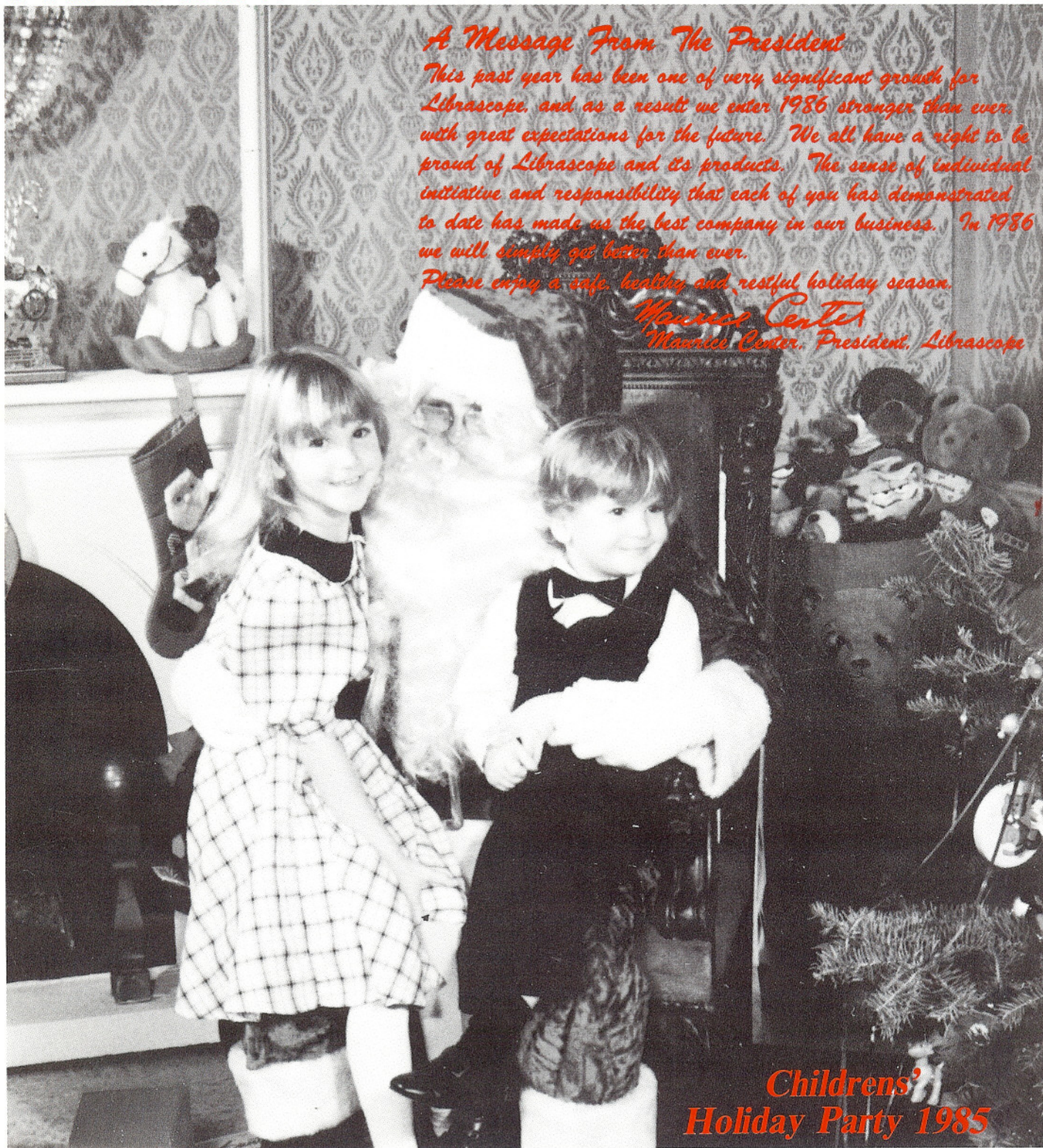
A Message From The President

This past year has been one of very significant growth for Librascope, and as a result we enter 1986 stronger than ever, with great expectations for the future. We all have a right to be proud of Librascope and its products. The sense of individual initiative and responsibility that each of you has demonstrated to date has made us the best company in our business. In 1986 we will simply get better than ever.

Please enjoy a safe, healthy and restful holiday season.

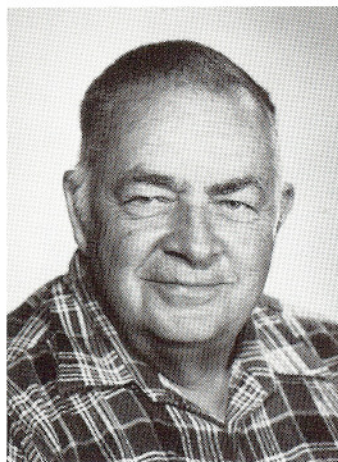
Maurice Center

Maurice Center, President, Librascope

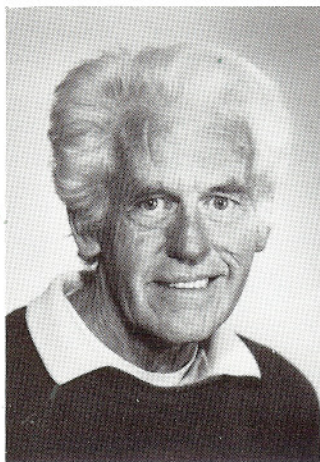


*Childrens'
Holiday Party 1985*

Libravets



David Conway
35 Years
Manufacturing Planning



James Walsh
35 Years
Production Control

MORE LIBRAVETS:

25 Years: Joseph Szentivanyi
10 Years: Davie Henshaw, Victor Netupsky

WE'RE SORRY!

In the Libravet column of November's *Librazette* we reversed the photos of Dona Filkins and Adeline Golden. We offer our apologies to both Dona and Adeline.



RETIREMENTS: Dolores Turnham



Richard Allen, from Estimating Assistant to Estimator; **Carol Bickel**, from Methods Analyst, Electrical Trainee to Methods Analyst, Electrical; **William Bowen**, from Sr. Contract Administrator to Mgr., Int'l Contracts & Major Sub-Contracts; **Rick Brown**, from Engineering Aide to Liaison Engineering Associate; **Peggy Daniels**, from Mfg. Engineer to Sr. Q.C. Engineer; **Jeffrey Kang**, from Associate Engineer to Engineer; **Niles Kershner**, from Technical

Writer to Sr. Technical Writer; **Cheryl Lozingot**, from Material Order Processor to Inventory Data Analyst; **Luz Maiuri**, from General Clerk to Material Order Processor; **Diane Payne**, from Department Clerk to Material Order Processor; **Gary Peak**, from Production Control Follow-Up to Sr. Production Control Follow-Up; **Richard Rupnik**, from Potentiometer Fabricator to Methods Analyst, Electrical; **Darvin Salbino**, from Electronic Technician to Sr. Electronic Technician; **Nelson Tran**, from ATE Applications Engineer to Engineer; **Frank Wall**, from Sr. Electronic Technician to Electronic Engineering Associate; **Mary Draga**, from Contract Coordinator to Contract Administrator.

LIBRASCOPE EMPLOYEES 1985 CREDIT UNION CHRISTMAS HOURS

Friday December 20, 1985	10:00 am to 1:00 pm
Monday December 23, 1985	Closed
Tuesday December 24, 1985	Closed
Wednesday December 25, 1985	Closed
Thursday December 26, 1985	Closed
Friday December 27, 1985	10:00 am to 2:30 pm
Monday December 30, 1985	10:00 am to 2:30 pm
Tuesday December 31, 1985	10:00 am to 2:30 pm
Wednesday January 1, 1986	Closed

No Loans will be processed During Plant Shutdown



CHAMPS...the Libra Stars defeated Bob's Big Boy Bombers 13-5 in a grudge match game that had the Libra Stars leading all the way. The Libra Stars were beaten by Bob's 6-3 during a regular season game. This is the Company's second championship in the Glendale Municipal Coed Slow Pitch League. *Team members, from left: Ken Pendry, Bill Dunaway (team mgr.), Cianna Carlson, Ken Mandeville, Tracey Matteson, Lori Eliason, Tim Bruse, Laura Miller, Adele Ramirez, Tony Cappellini, Jim McKay, and Mike Rimbault. Not pictured - Pat Dousette and Judy Resh.*

1986 Holiday Schedule

The full holiday schedule for 1986 (including the plant closure) includes:

New Year's Day Observed — Wed., January 1, 1986
Washington's Birthday Observed — Mon., February 17
Good Friday — Fri., March 28
Memorial Day Observed — Mon., May 26
Independence Day — Fri., July 4
Labor Day — Mon., September 1
Thanksgiving Holiday — Thurs. & Fri., November 27 & 28
Christmas Holiday — Thurs. & Fri., December 25 & 26
Floating Holiday — Mon. & Tues., December 29 & 30
Plant Shutdown — Wed., December 31
New Year's Holiday 1987 — Thurs. & Fri., January 1 & 2