

Tactical Display Terminal (TDT)



Librascope Corporation

ARMY USES

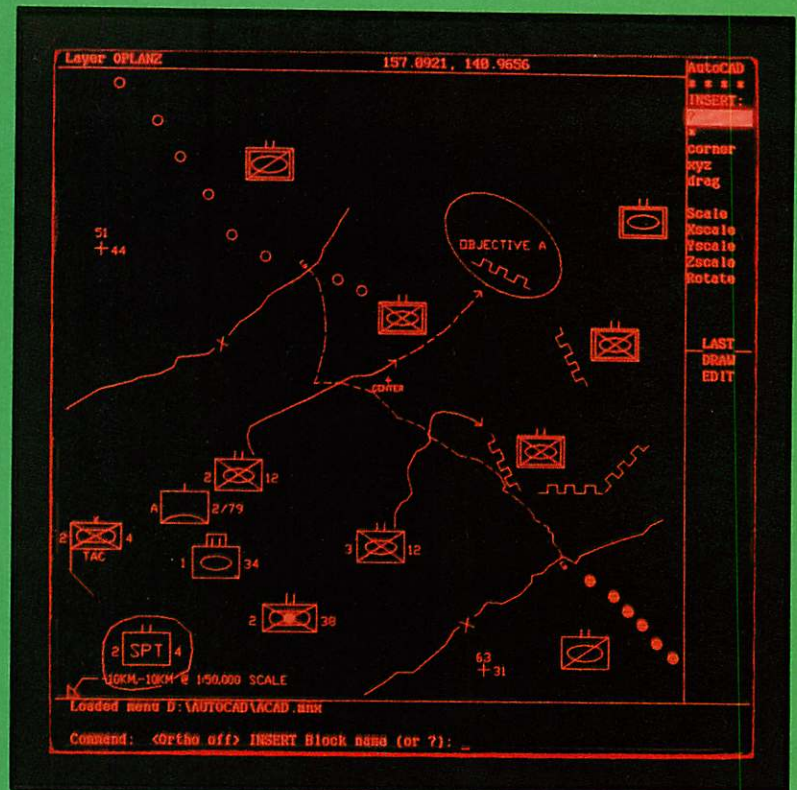
Fully Maneuver Control System (MCS) compatible.

Ground battle command and staff are supported with high resolution displays of accurate, timely, and meaningful information.

Planning, decision making, and execution of mission tasks get increased flexibility through use of images rather than text.

System and communications management and control are integral to the terminals.

Concurrent operation of tactical and MS/DOS application software.

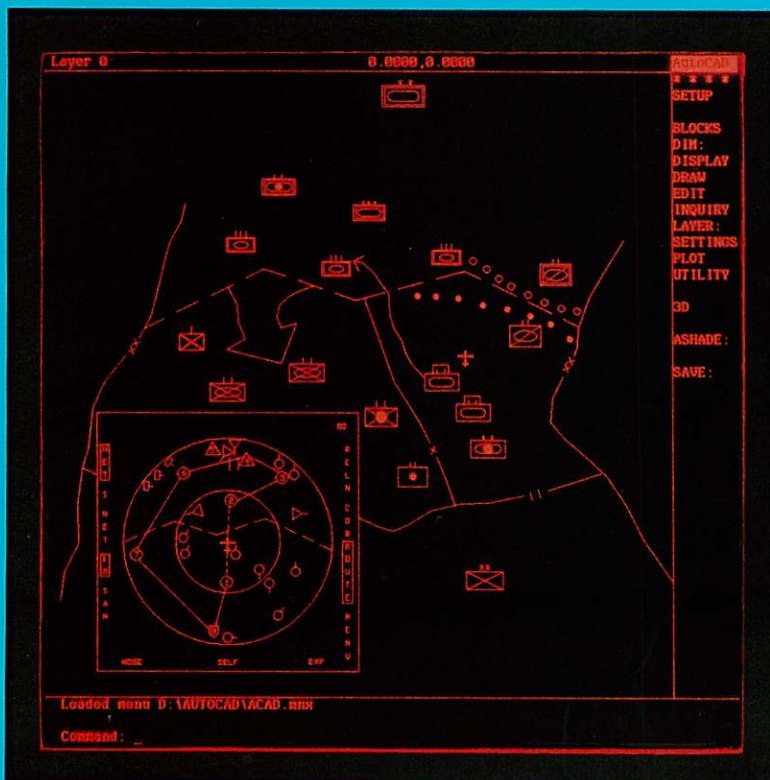


USAF USES

Air Land Battle is coordinated by exchange of intelligence, attack, and assessment information.

Joint information distribution reduces possibility of fratricide when conducting air operations.

Forward control centers need less logistics support with reduced weight and power requirements.



UNIVERSAL COMMUNICATIONS INTERFACES

KY-68

SB-3614

ALLIED

ANDVT

SINGARS

TACSAT

STU-III

LAN

JTIDS

PABX

PSTN

PLRS



INDUSTRIAL USES

Industrial workstation (PC based) for the plant floor

Annunciator Panel

Large display for multiple worker viewing

Process Flow status display

Air Traffic Control, flat view through display



COMMERCIAL USES

CAD/CAM/CAE Display

Desk space saving workstation

Communications network status display

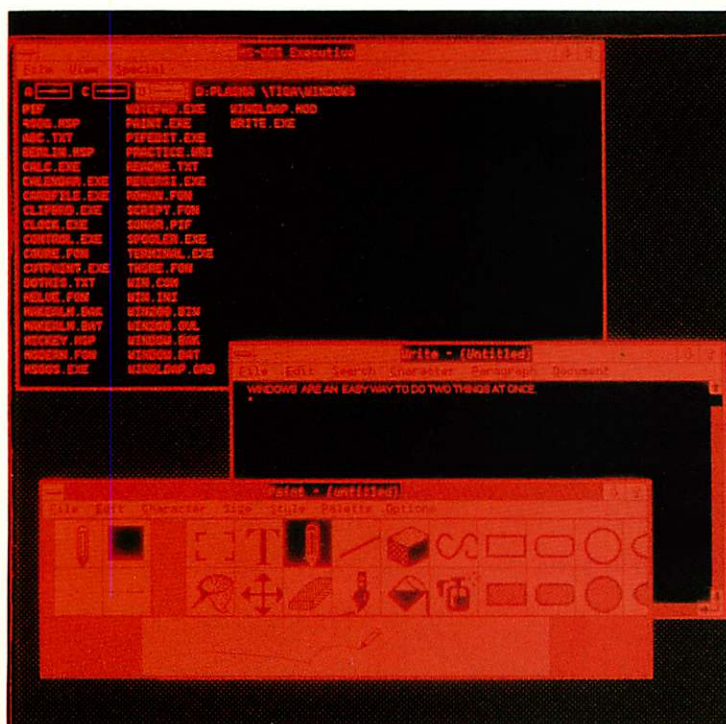
Wall mountable office display

Multipage / multiwindow document display

Librascope's TACTICAL DISPLAY TERMINAL is a low cost, heavily ruggedized suite of high tech information and communication modules configured in an open architecture that make it extremely adaptable and flexible for multiple field uses. It contains a 24 inch plasma display panel, embedded PC, keyboard/trackball control, programmable communications interface unit, printer/plotter (option), power converter (optional), and ancillaries.

Operational Features

- Deployable - 150 lb. / 7 cu.ft.
- Survivable in Tactical Vehicles
- Dependable Hardware
- Maps and Data Bases
- Multiple Communications
- Compact Flat Panel Design
- DOS/PS-2 Compatible



Technical Features

- 60 dots per inch plasma
- COTS text and graphics
- 12 Megabytes RAM,
- 40 Megabyte Disk
- Video
- AC or DC Power
- Multiple Interface Ports

SPECIFICATIONS

Altitude:

Operation to 10,000 ft.
Transport to 40,000 ft.

Temperature:

Operating -45 C to 60 C.
Non-operating -57 C to 71 C.

Humidity:

MIL-STD-810C, Method 507, Procedure III.

Vibration: (shock mounted)

5.0 to 5.5 Hz at 1.0 inch double amplitude.
5.5 to 30 Hz at 1.5G.
30 to 48 Hz at 0.036 inch double amplitude.
48 to 500 Hz at 4.0G

Shock:(shock mounted)

MIL-STD-901C, 15G, 11 millisecond
shocks on three mutually perpendicular axes.

Reliability:

MTBF Exceeds 8000 Hours (including Power
Supply)

Maintainability: MTTR <15 minutes

Rain:

MIL-STD-810C, Method 506, Procedure I.

Sand and Dust:

MIL-STD-810C, Method 510, Procedure I.

Salt Fog:

MIL-STD-810C, Method 509, Procedure I.

Acoustic Noise: SCL-1280D, Para. 4.7.4

Fungus: MIL-STD-810C, Method 508.

Bench Handling:

MIL-STD-810, Method 516.3, Procedure VI.

Electromagnetic Interference:

MIL-STD-461, Notice 4.
CE01 CS01 RE02 RS03
CE04 CS02 RE02.1 RS03.1
CS06

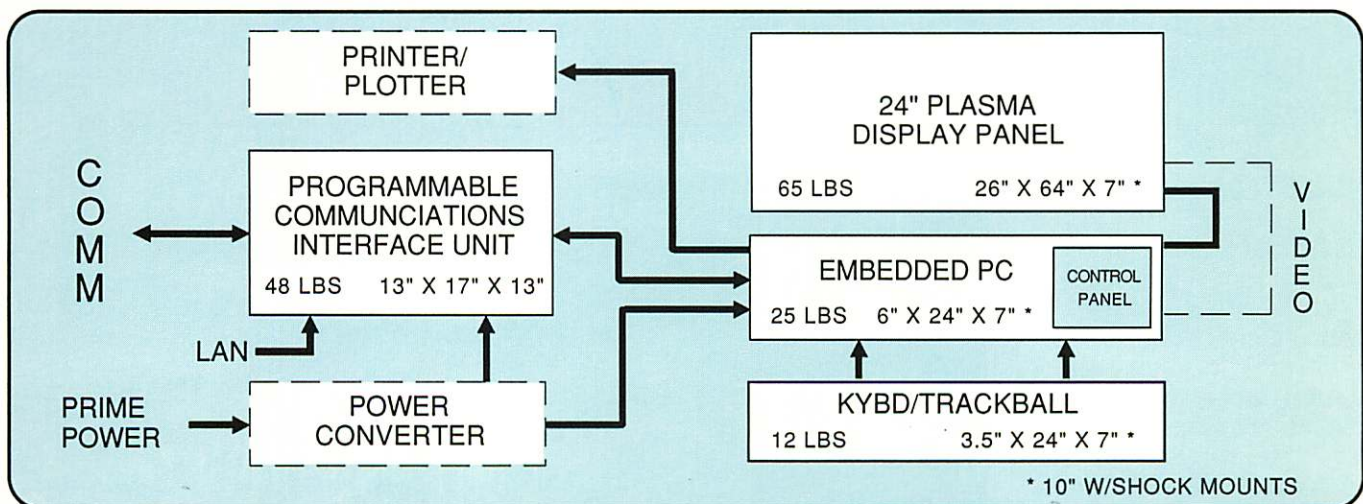
Power Consumption: 600 watts maximum

Mounting: Rear shock isolators (included)

Cooling: Natural conduction and convection

Librascope's TACTICAL DISPLAY TERMINAL is an integrated system of six configuration items interconnected by cables. The system software is distributed among the display, the embedded PC, and the programmable communications interface unit. Display software is partitioned into MC68000, TI34010, TIGA™, and gate array ROM. PC software consists of MS/DOS programs for text and graphics, including windows and AutoCAD™,

PCIU software is downloaded from the embedded PC hard disk and provides communications processing plus display and data base processing for the Army's Maneuver Control System (MCS). The system is controlled from a keyboard-trackball combination. Power conversion and printer/plotter modules are necessary for DC prime power input and hard copy output.



Librascope

Librascope Corporation, 833 Sonora Ave., Glendale, California 91201
Telephone (818) 244-6541 • FAX (818) 502-8145 • TELEX 215620