

## BIOLOGICAL AEROSOL WARNING SYSTEM

# BAWS

## EARLY REMOTE DETECTION & BASE REPORTING

BAWS provides early remote Biological Detection capability for monitoring the perimeter of key military areas or high value assets. Comprised of remote stations, a base station, and a PC Analysis Workstation, BAWS provides biological detection information along with wind speed and direction, and location data. Remote stations transfer the information to the BAWS base station where it's collated with other data to determine the alarm conditions, and generate the proper NBC report. The PC Analysis Workstation enables the operator to view the status of remote stations deployed in a network array, or the status of any single remote station.

### Key Features

- Sophisticated bio-detection algorithm (continuously updated)
- Interfaces with other biological and chemical detectors in a network configuration
- Serial interfaces include RS-422, RS-232, RS-485
- Remote Stations capable of acting as relays
- Tactical internet connectivity via FBCB2 interface
- Built in commercial UHF telemetry link radio data and receives control information
- Effective Range 10km
- Measures and displays wind speed and direction
- Built in GPS receiver
- Monitors and controls up to 150 remote stations
- Base station automatically generates NBC-1 and 4 biological reports
- PC Analysis Workstation graphically displays location and real-time status of the remote stations in an array

### Potential Applications

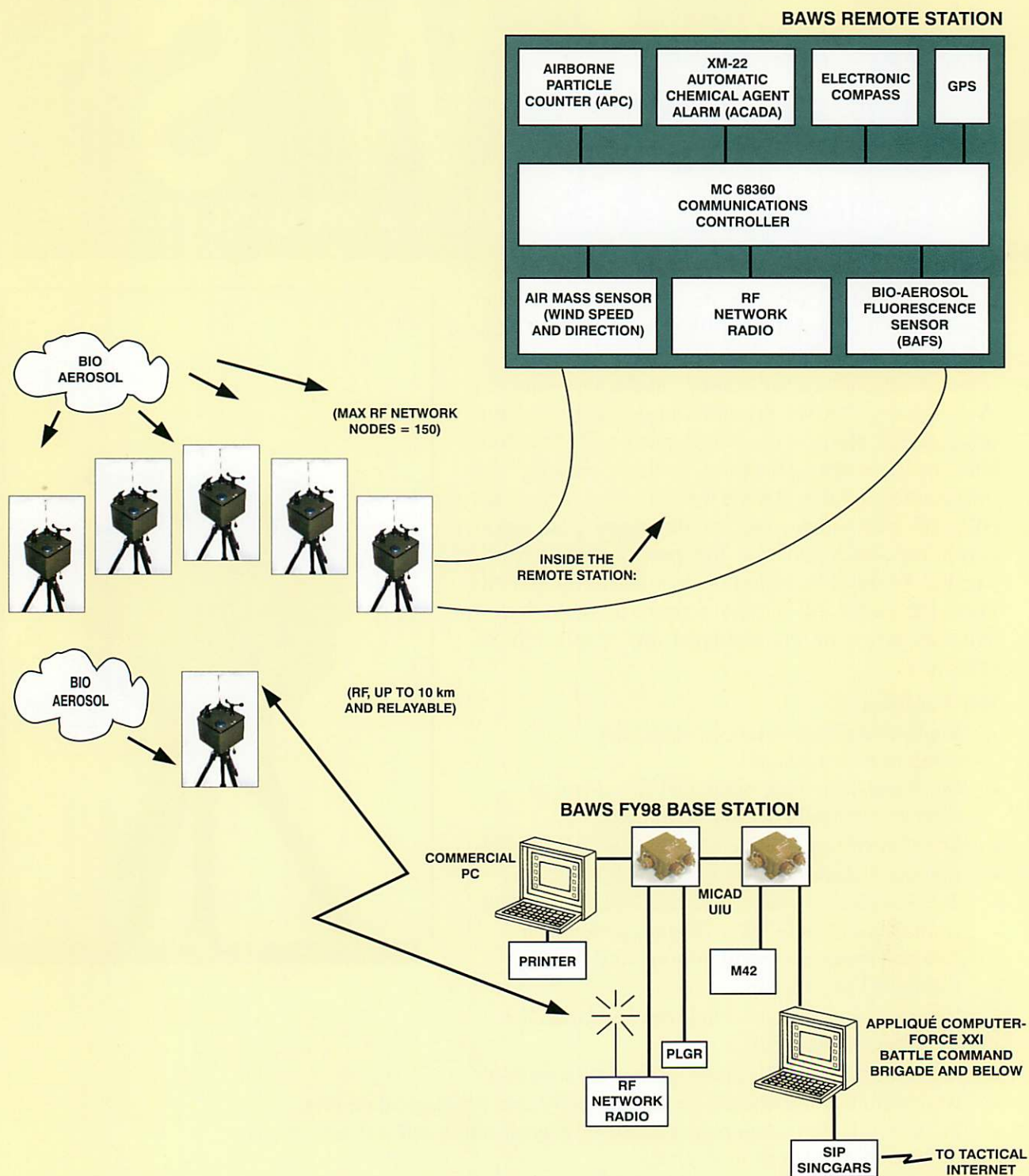
- Airfields Monitoring/Protection
- Naval Bases/Port Facilities
- Support Areas and Special Forces
- Key Public Buildings and Sensitive Facilities



LOCKHEED MARTIN



# BAWS - EARLY REMOTE DETECTION AND BASE REPORTING



## BAWS REMOTE & BASE STATIONS

For additional information, write or telephone:  
 Lockheed Martin Librascope, 811 Sonora Ave., Glendale, California 91201-2433  
 Telephone: 818-244-6541 • FAX: 818-502-7298